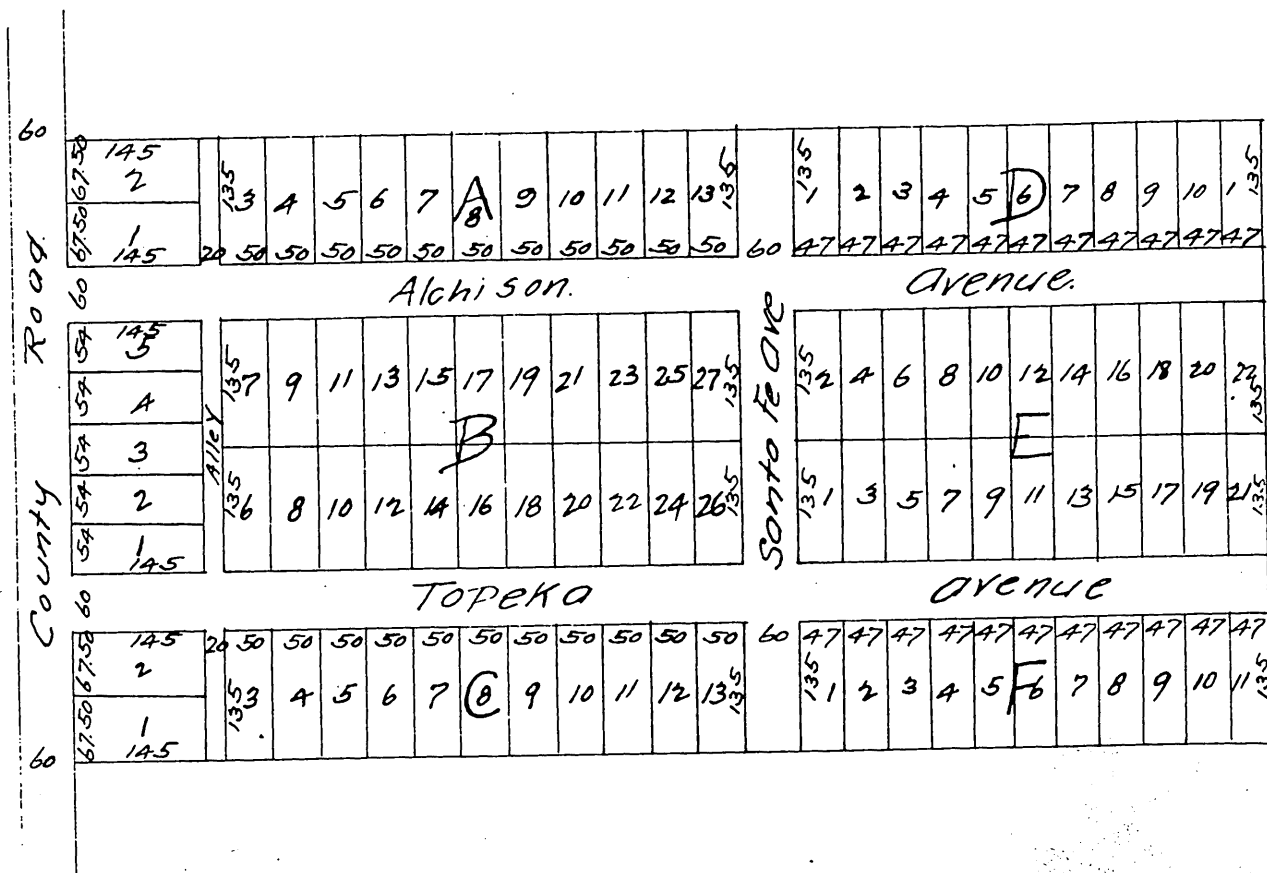


MAP OF Owens' Addition to SANTA FE

Being the South $\frac{1}{2}$ of the North West $\frac{1}{4}$ of the NE $\frac{1}{4}$ of Sec 7 Tp 3 S R 11 W S B M.
Los Angeles Co Cal.

Scale 100ft = 1 inch.



A full true and correct copy of the original (reduced to the scale of 200 feet to one inch) recorded September 21st 1887 at 19 min Past 3 P.M. at request of J. S. Owens.

Frank O. Gibson County Recorder.
By George Bugbee Deputy.