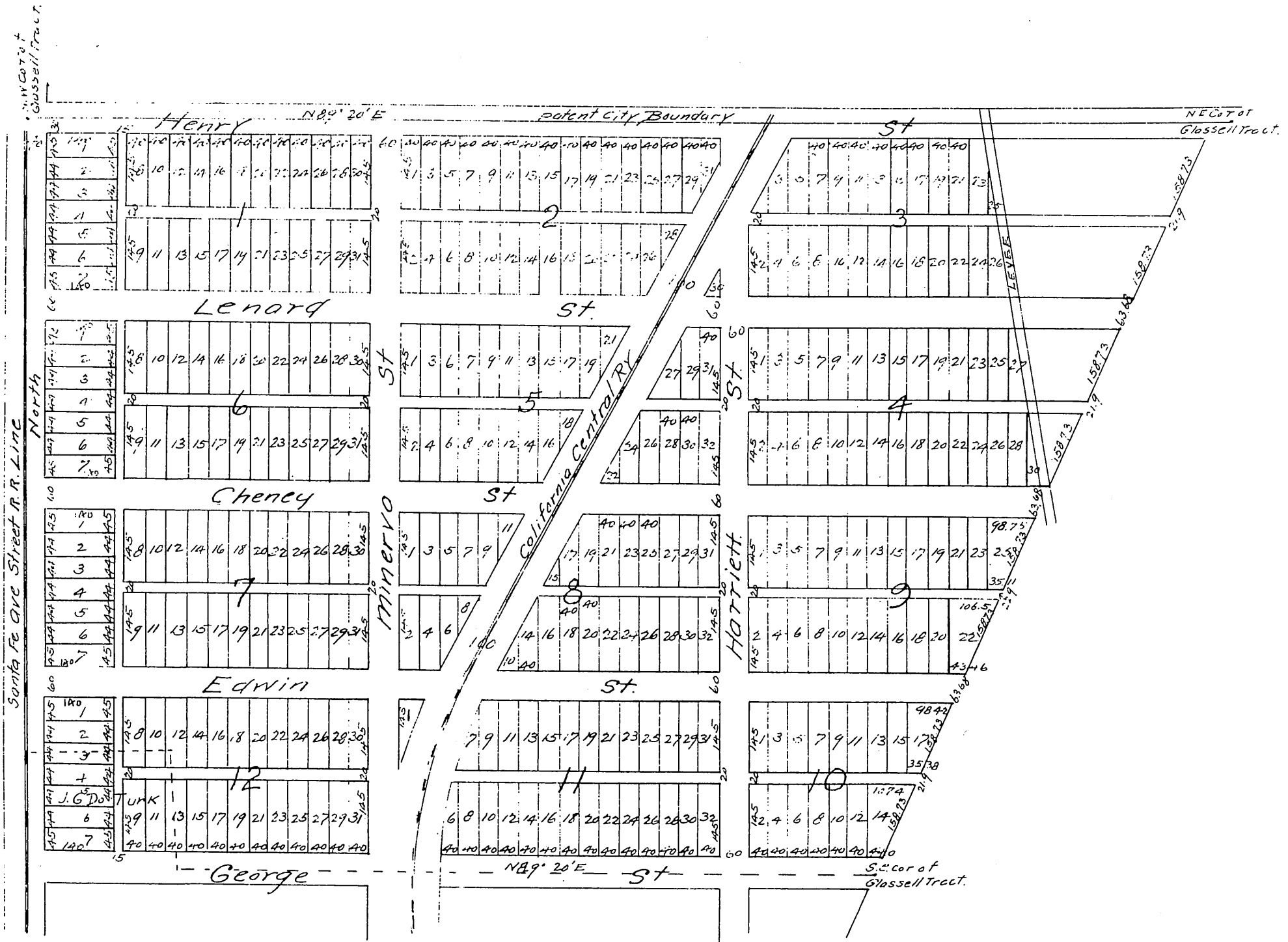


# H.M. AMES'S SUBDIVISION. OF THE Glassell Tract.

Being a portion of the Rancho San Antonio allotted to Glassell,  
Chapman & Smith by decree of the 17<sup>th</sup> District Court Los  
Angeles Co., Cal. in the case of Gibson et al, vs, Lugo et al No 2055,  
Entered Dec. 12, 1874, Los Angeles Cal.

Subdivided June 1887 by L. Frielce.  
Scale 100ft to 1 inch.



A full true and correct copy of the original (reduced to  
the scale of 240 feet to one inch) recorded Sept 22, 1887  
at 8:30 a.m. at request of H. M. Ames.  
Frank A Gibson County Recorder  
By George Bugbee Deputy.