



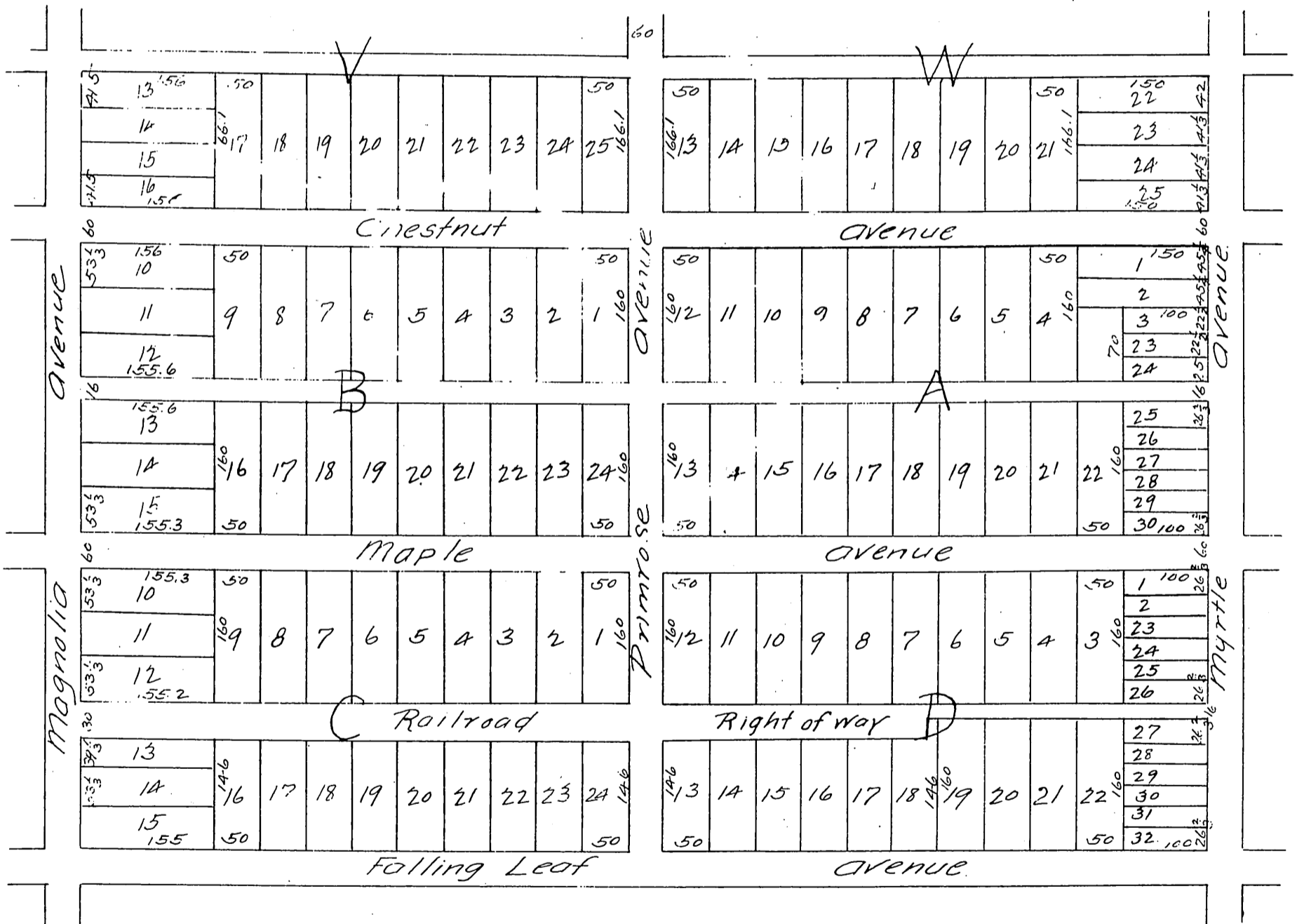
# MAP of ADDITION No 2

to town of

# MONROVIA.

Los Angeles County, California.

Being a Subdivision of Lots A, B, C, D, E and F, Block 6  
Monrovia Tract, also covering W. A. Pile's Subdivision of  
Lot A and Pasadena Subdivision of Lots B, C and D.



A full true and correct copy of the original recorded Sept 23<sup>rd</sup>  
1887 at 11.30 a.m. at request of W. N. Monroe.

Franko Gibson County Recorder.  
By George Bugbee Deputy.