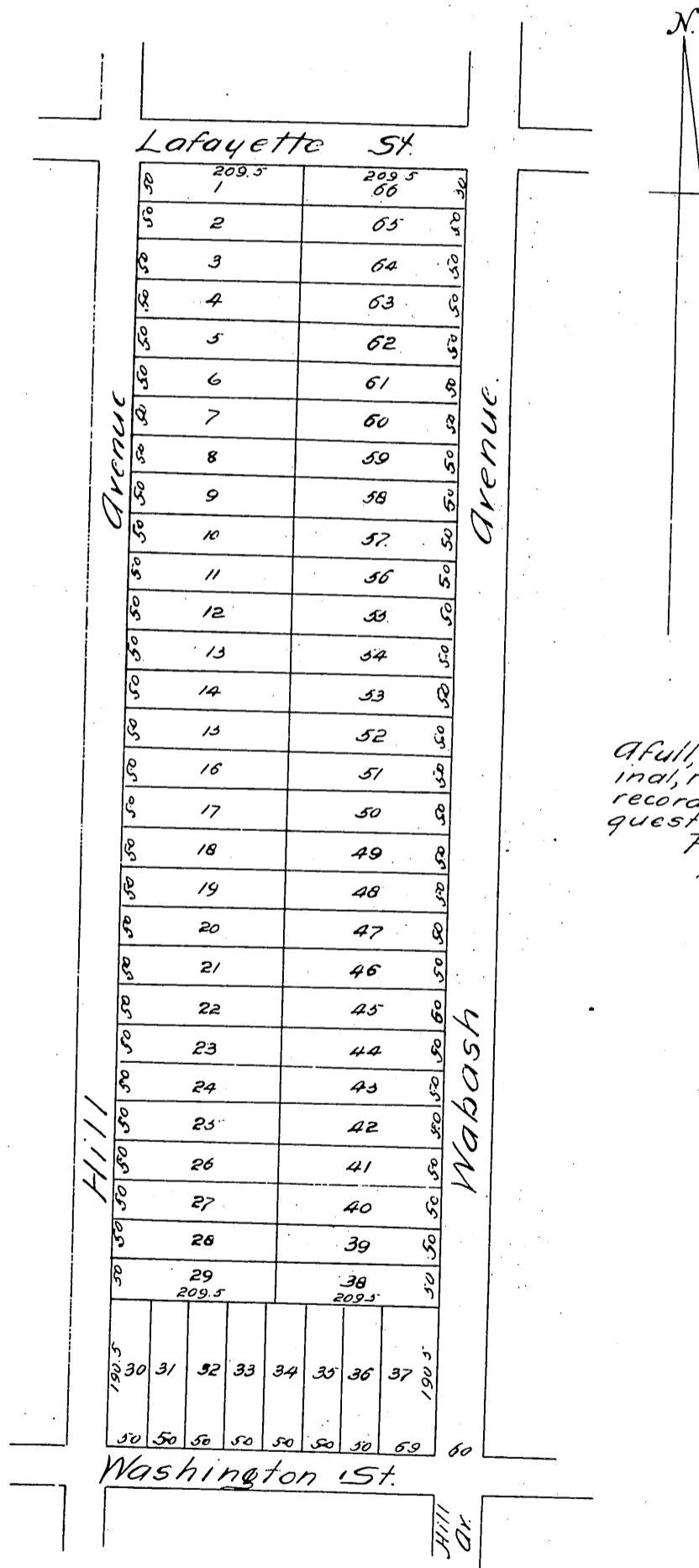


ROSETTA HEIGHTS

BEING PART OF THE GROGAN TRACT IN THE
RANCHO SAN PASCUAL

Being the property ^{of} described in deed from J.W. Hugus to Chas. M. Stimson & Geo. W. Stimson
filed in the Recorder's Office Sept 29 1887.
J. S. McDonald, C.E.



A full, true and correct copy of the original, reduced to a scale of 200' to the inch, recorded Sept 29 1887, at 4:21 PM at request of Chas. M. Stimson
Frank A. Gibson, County Recorder.
By George Paugvee, Deputy.