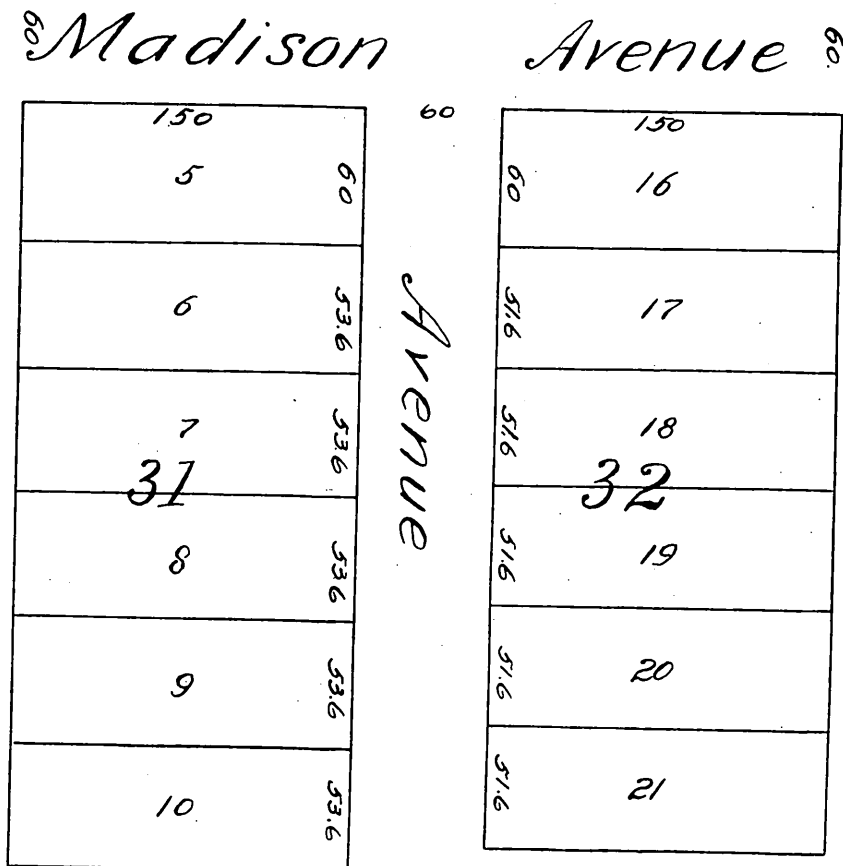
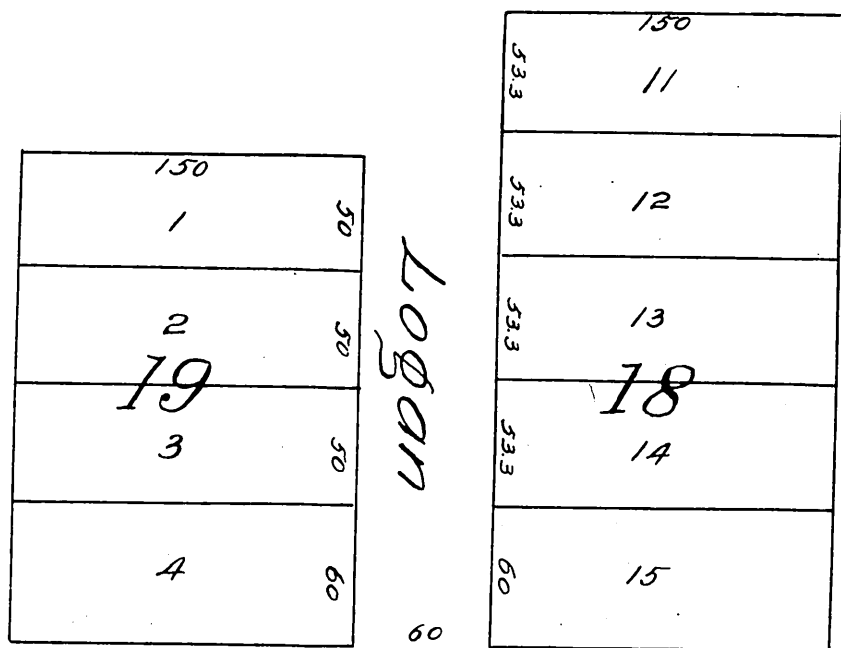


443

HARVEYS
 SUBDIVISION OF LOTS 18, 19, 31, 32
 BLOCK E OAK KNOLL TRACT
 PASADENA
 SCALE 50 FT TO 1 IN



A full, true and correct copy of the original, reduced to a scale of 120 ft. to the inch, recorded Sept 30 1887 at 10.44 A.M. at request of J. D. Harvey.
 Frank A. Gibson, County Recorder.
 By George Bugbee, Deputy.