



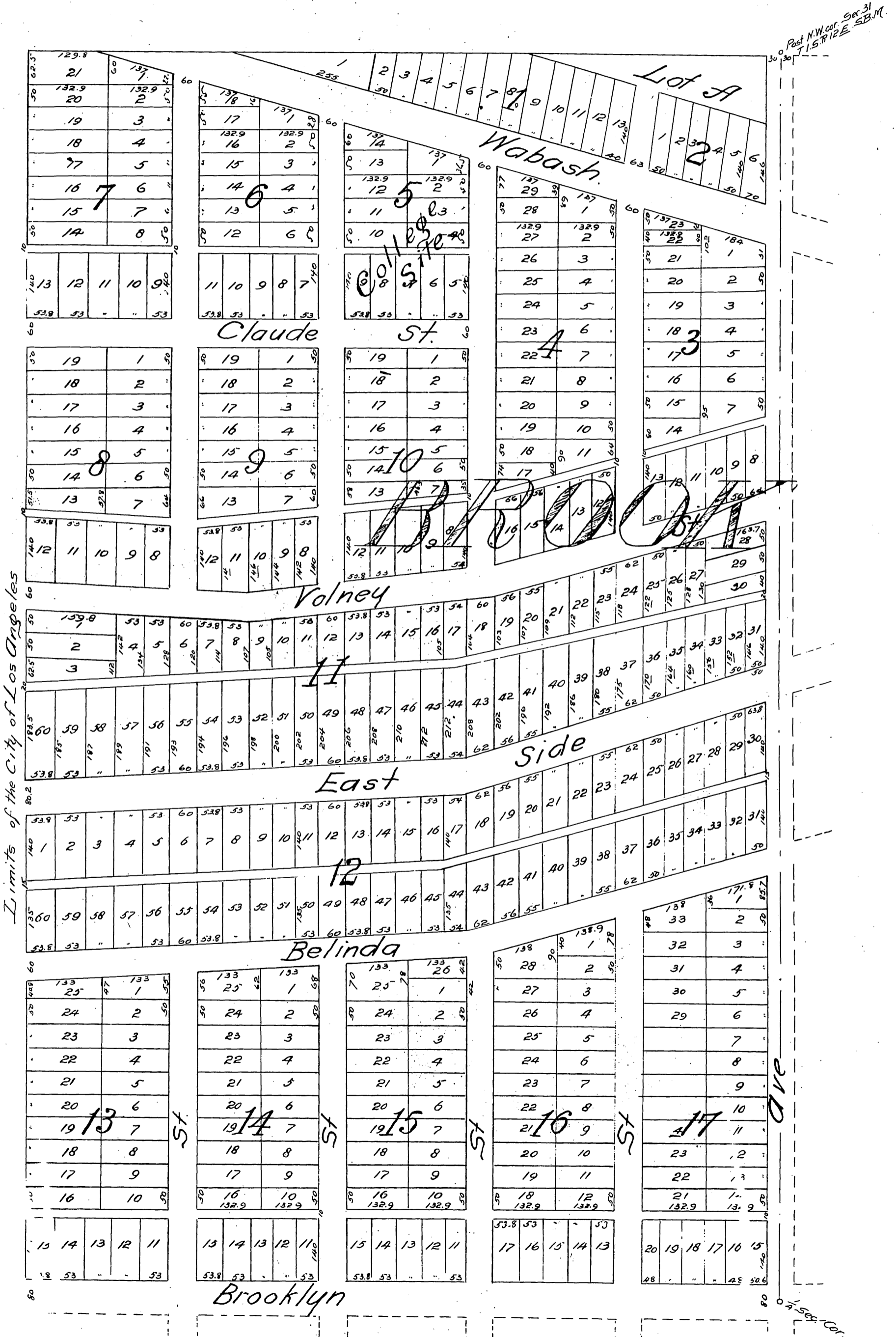
# Map of

## H.T. HAZARD'S EAST SIDE ADDITION

to the City of Los Angeles.

Being a Subdivision of Lots 1, 2 and 3 and the E 1/2 of the E 1/2 of Sec. 36 T. 1. S. R. 13. W. and the E 1/2 of the E 1/2 of Sec. 31, T. 1. S. R. 12. W. S.B.M.

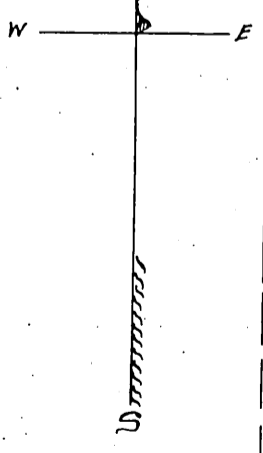
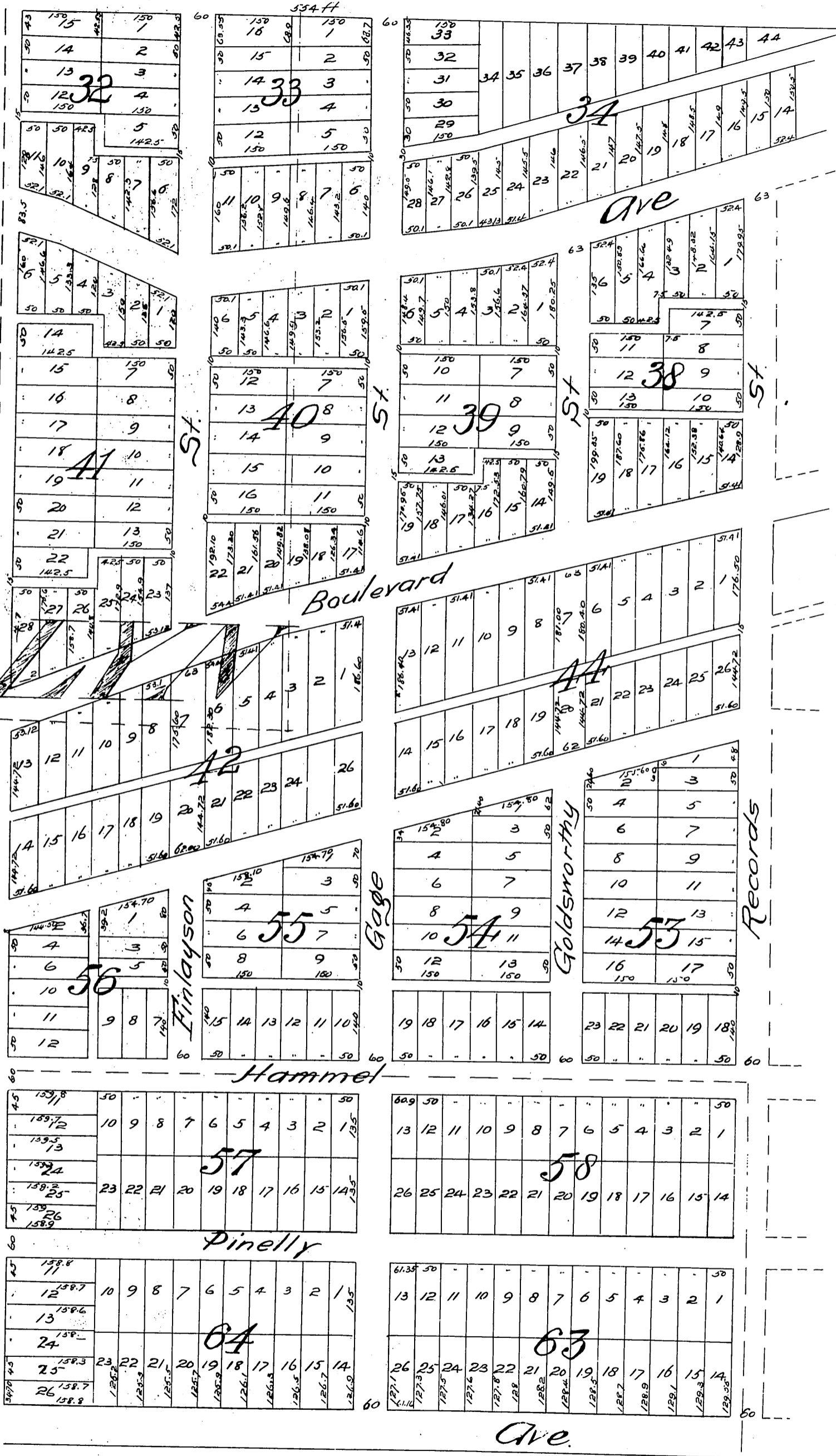
Surveyed by John Goldsworthy, C.E.

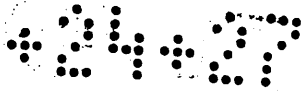


Post N.W. cor. Sec. 31 T. 1. S. R. 12 E. S.B.M.

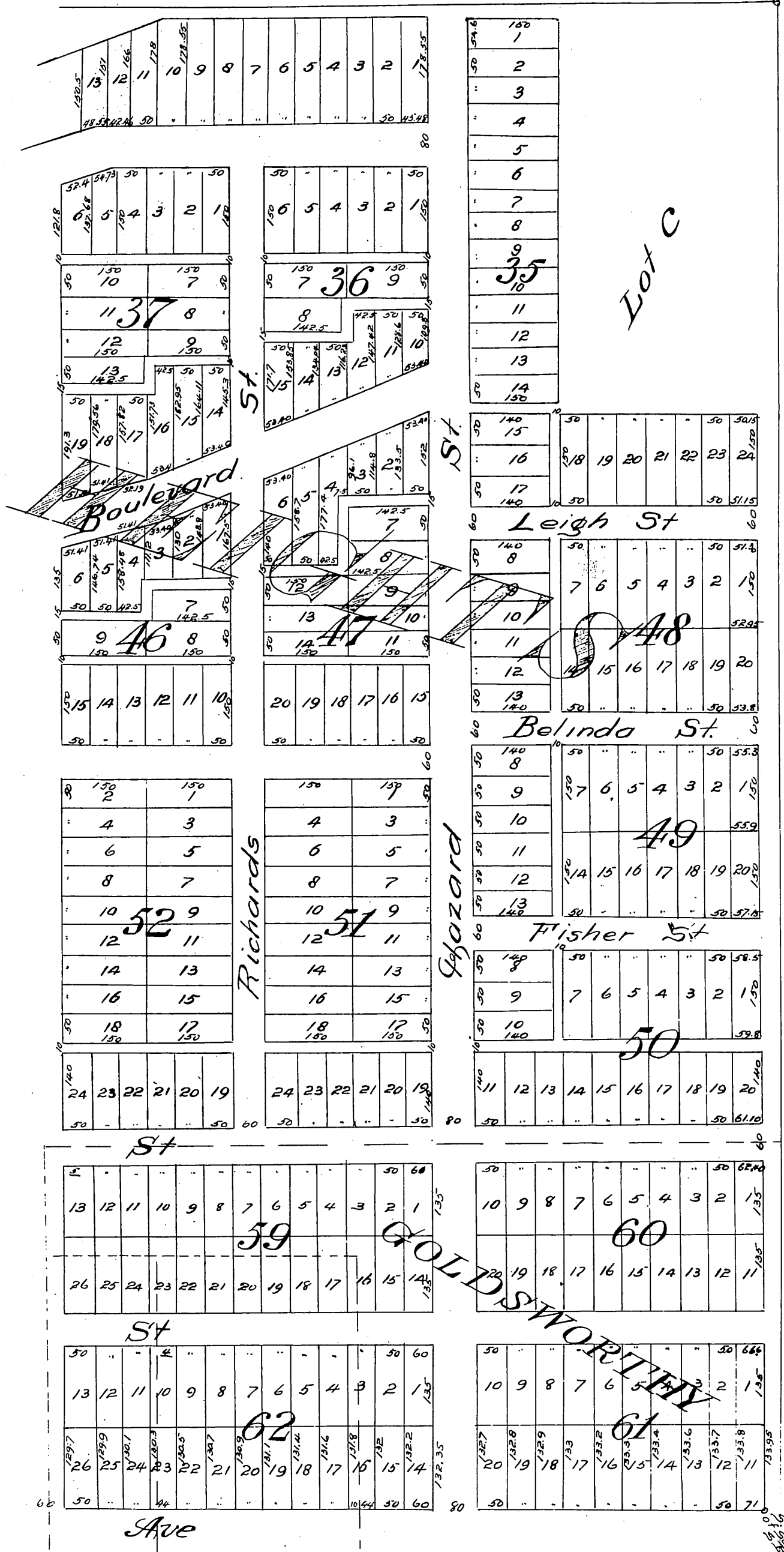
Limits of the City of Los Angeles

Sec. Cor.





Part N. Middle of Sec. 31  
T.15. R. 12 W. S. 31 N.



Part E. of NW 1/4  
of Sec. 31, T.15. R. 12 W. S. 31 N.

1/4 Sec. cor.

31	30	3	2	1	31	30	3	2	1	31	30	3	2	1	31	30	31	32	33	32	31	30	3	2	1
132.9	132.9				132.9	132.9				132.9	132.9				132.9	132.9				132.9					
28	5				28	5				28	5				28	5				28	5				
27	6				27	6				27	6				27	6				27	6				
26	7				26	7				26	7				26	7				26	7				
25	8				25	8				25	8				25	8				25	8				
22	9				21	9				20	9				19	9				18	9				
23	10				23	10				23	10				23	10				23	10				
22	11				22	11				22	11				22	11				22	11				
21	12				21	12				21	12				21	12				21	12				
20	13				20	13				20	13				20	13				20	13				
19	14				19	14				19	14				19	14				19	14				
18	15				18	15				18	15				18	15				18	15				
17	16				17	16				17	16				17	16				17	16				

Federico

St.

13	4	24	4	24	4	27	1	27	1
12	5	23	5	23	5	26	2	26	2
11	6	22	6	22	6	25	3	25	3
10	7	21	7	21	7	24	4	24	4
23	8	20	8	20	8	23	5	23	5
9	8	19	9	19	9	22	6	22	6
132.9	132.9	18	10	18	10	21	7	21	7
		17	11	17	11	20	8	20	8
		16	12	16	12	19	9	19	9
		15	13	15	13	18	10	18	10
		14	14	14	14	17	11	17	11
		13	15	13	15	16	12	16	12
		12	16	12	16	15	13	15	13
		11	17	11	17	14	14	14	14
		10	18	10	18	13	15	13	15
		9	19	9	19	12	16	12	16
		8	20	8	20	11	17	11	17
		7	21	7	21	10	18	10	18
		6	22	6	22	9	19	9	19
		5	23	5	23	8	20	8	20
		4	24	4	24	7	21	7	21
		3	25	3	25	6	22	6	22
		2	26	2	26	5	23	5	23
		1	27	1	27	4	24	4	24
			28		28	3	25	3	25
			29		29	2	26	2	26
			30		30	1	27	1	27
			31		31		28		28

Alma

Hicks

Dilman

Townsend

Rowan

E. First

St.

36	6	36	6	36	6	36	6	36	6
35	7	35	7	35	7	35	7	35	7
34	8	34	8	34	8	34	8	34	8
33	9	33	9	33	9	33	9	33	9
32	10	32	10	32	10	32	10	32	10
31	11	31	11	31	11	31	11	31	11
30	12	30	12	30	12	30	12	30	12
29	13	29	13	29	13	29	13	29	13
28	14	28	14	28	14	28	14	28	14
27	15	27	15	27	15	27	15	27	15
26	16	26	16	26	16	26	16	26	16
25	17	25	17	25	17	25	17	25	17
24	18	24	18	24	18	24	18	24	18
23	19	23	19	23	19	23	19	23	19
22	20	22	20	22	20	22	20	22	20
21	21	21	21	21	21	21	21	21	21
20	22	20	22	20	22	20	22	20	22
19	23	19	23	19	23	19	23	19	23

Belvedere Tract

Aliso

Ave.

Occidental College Tract

A full, true and correct copy of the original recorded October 4th 1887 at 5:11 min. past 4 P.M. at request of H. T. Hazard.

Frank A. Gibson County Recorder. by Wm E. Johnston Deputy.

Post S.W. cor. Sec. 31 T. 1 S. R. 10 W. S. 8 N.