

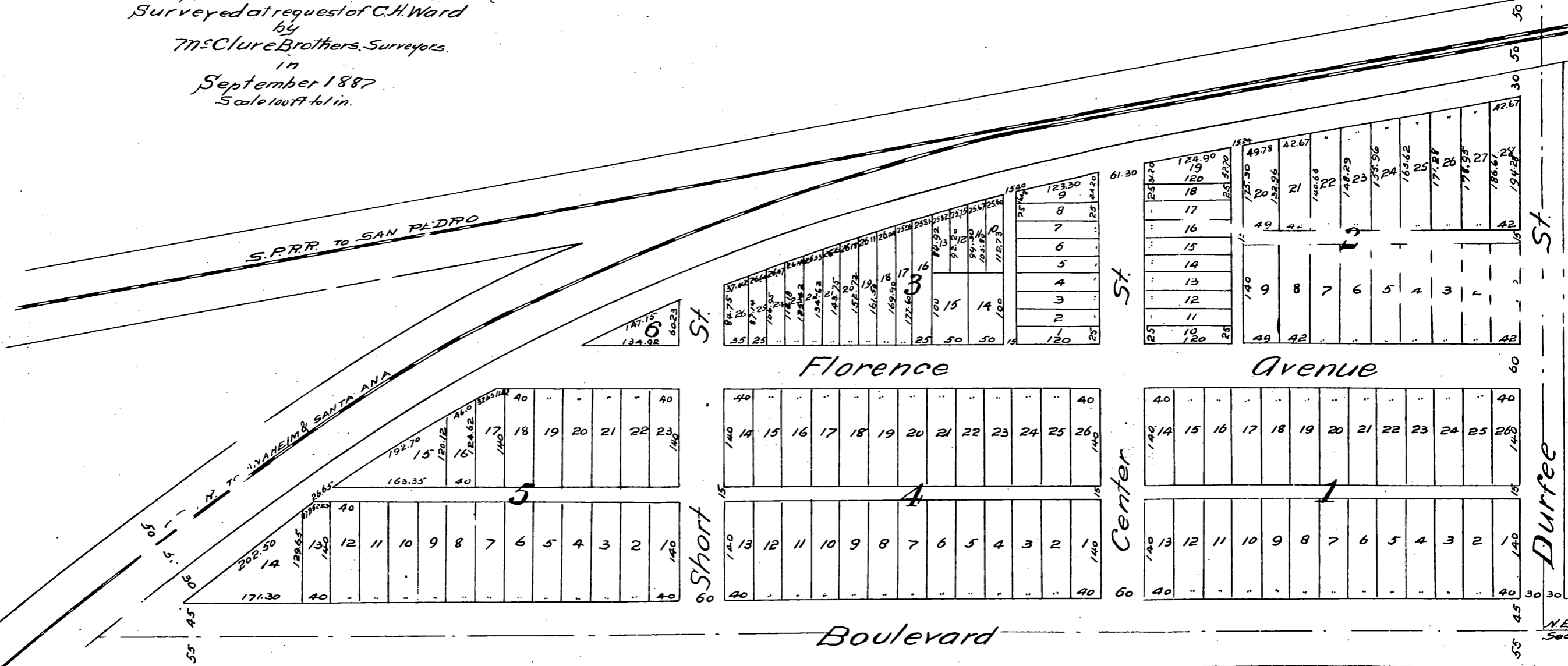
MAP OF FLORENCE STATION TRACT

Being a Subdivision of 22 1/40 acres in the N.E.
of the S.W. 1/4 of Sec. 27 T. 25. R. 13 W. S. B. B. & M.
Surveyed at request of C. H. Ward

by
M. S. Clure Brothers, Surveyors.

in
September 1887

Scale 100 ft. to 1 in.



A full true and correct copy of the
original, reduced to 2/3 size, recorded
Oct 4 1887 at 4.01 P.M. at request of C.
H. Ward
Frank A. Gibson, County Recorder
By George Langbee, Deputy.

N.E. cor. of the S.W. 1/4 of
Sec. 27, T. 25, R. 13 W. S. B. B. & M.

R. S. Durfee
517

Durfee St.

St.

Center

Florence

Avenue

Boulevard

Nadeau Vineyard

St.

Short

5

4

1

3

6

33