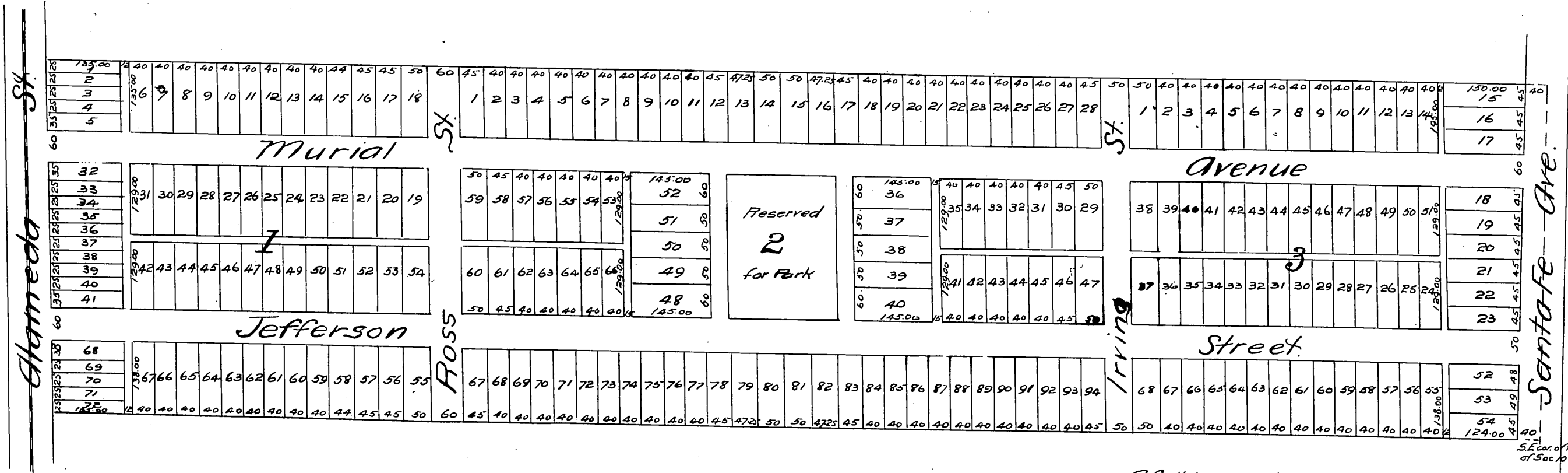


Map

OF
 The Aldine Square Tract
 Los Angeles Co. Cal.
 Surveyed Sept 1887 by E.G. Jones.
 Scale 100'-1"



A full, true and correct copy of the original reduced to a scale of 200 feet to the inch recorded Oct 5 1887 at 2 P.M. at request of Moss & Ward Frank A Gibson County Recorder. By George Bugbee Deputy.

S.E. cor. of the S 1/2 of the N 1/2 of the SW 1/4 of Sec 10 T25 N 13 W. S.B.M.