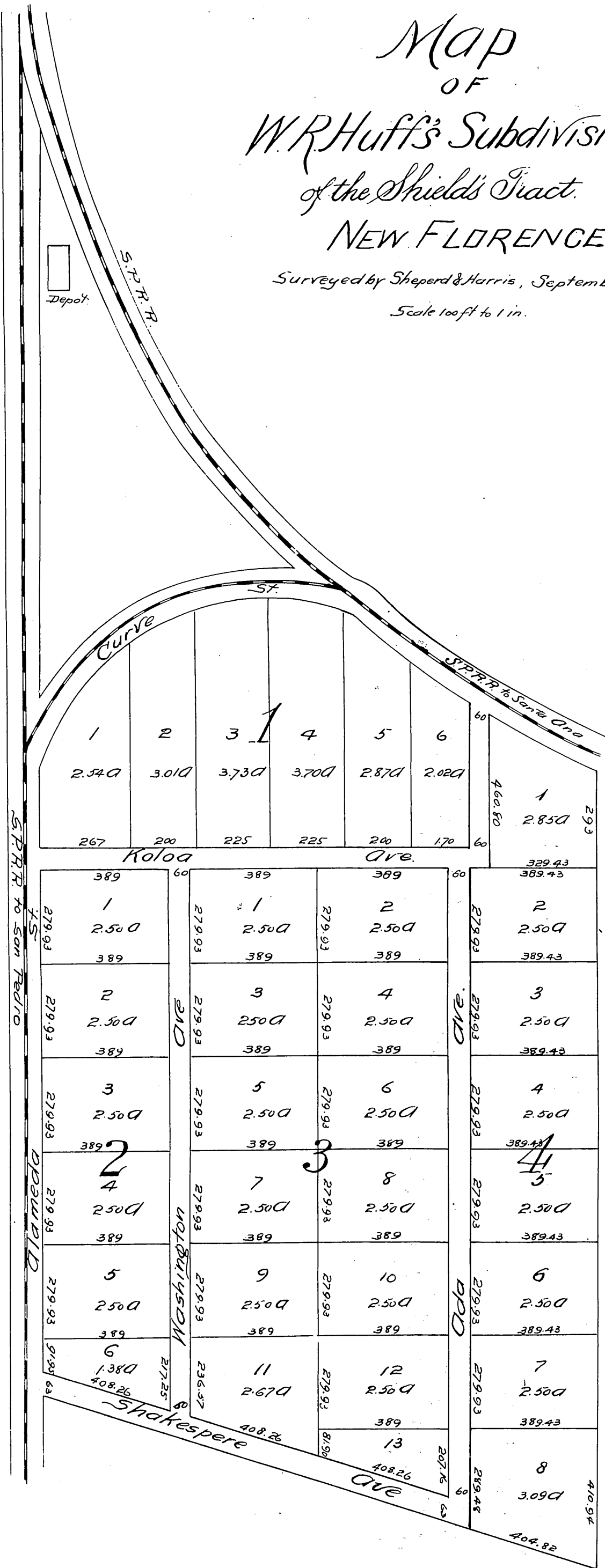


Map OF W.R. Huff's Subdivision of the Shields Tract. NEW FLORENCE,

Surveyed by Sheperd & Harris, September 20th 1887.

Scale 100ft to 1 in.



This is a true and correct copy of the original (reduced to 300 feet) to one inch recorded October 7th 1887 of 12 min pass 2724. At request of W. R. Huff.

Frank A. Gibson, County Recorder
by George Souther, Deputy.

