



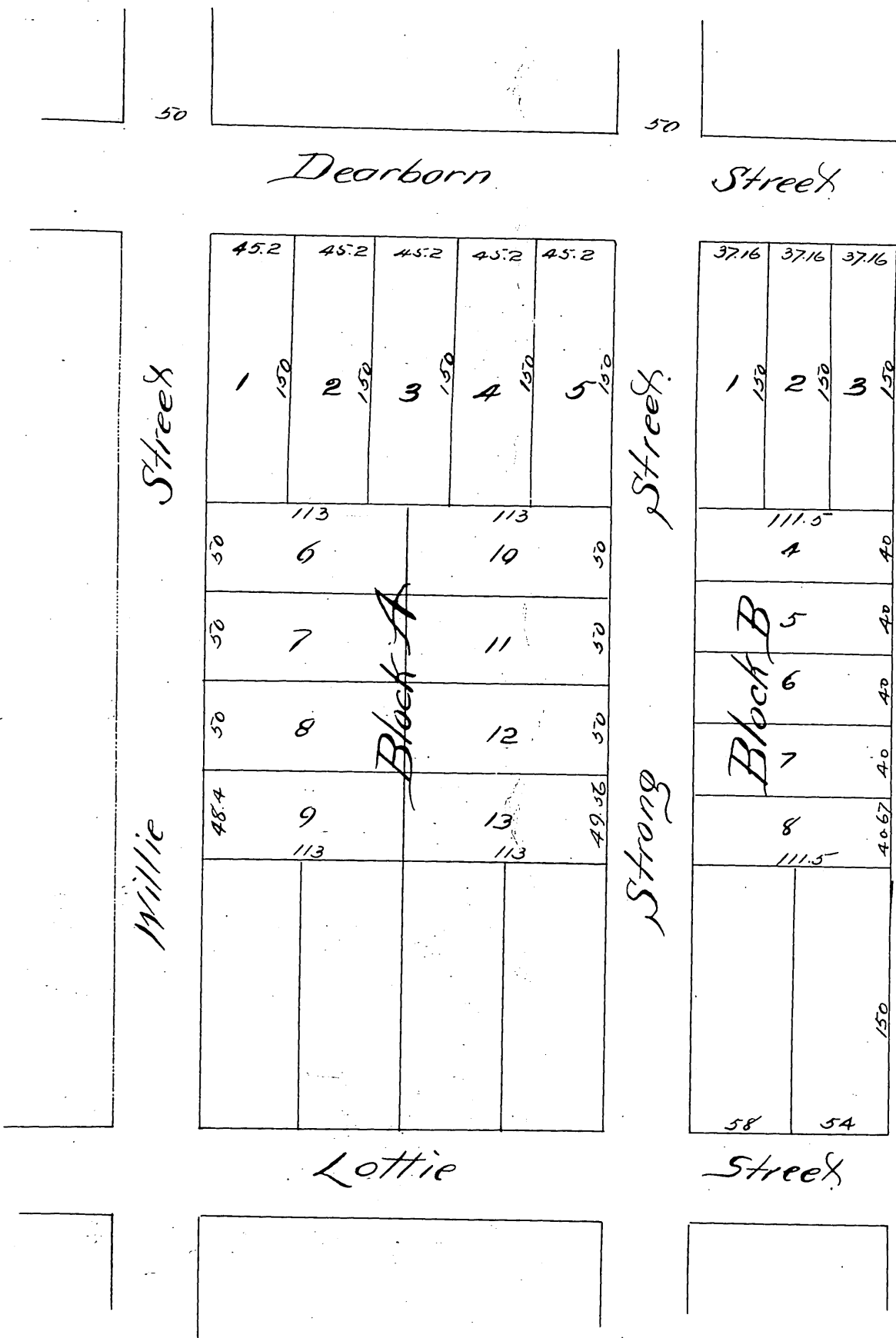
# MAP of the

## Subdivision of Lots 1 & 2 of

### J. W. Strong's Tract.

Surveyed by *Buchner & Donaldson.*

Scale 50 ft. one in.



A full true and correct copy of the original (reduced to the scale of 80 feet to one inch) recorded October 10<sup>th</sup> 1887 at 11<sup>30</sup> P.M. at request of J. W. Strong

*Frank A. Gilson, County Recorder*  
*by George Langbee Deputy.*