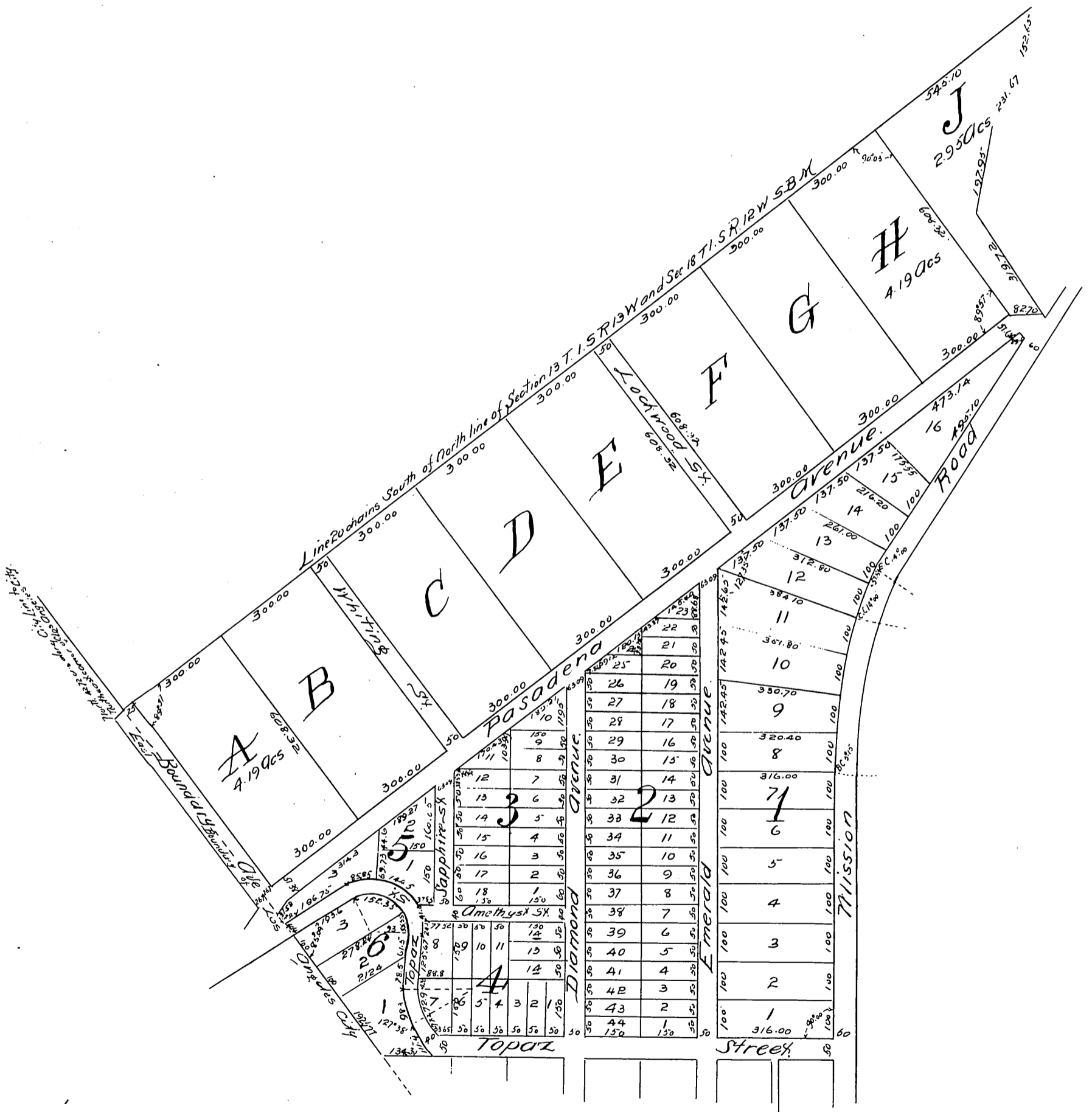


MAP
 of the
 Yorba & Paige Tract
 adjoining Northeast corner of the
 City of Los Angeles,
 Surveyed at request of Messrs Yorba & Paige in
 July & August 1887 by King & Winston
 Scale 150 feet to one inch.



A full true and correct copy of the original (reduced to the scale of 300 feet to one inch) recorded October 11th 1887 at 9.47 A.M. at request of J.F. Yorba

Frank A. Gibson, County Recorder.
 by George Bugbee, Deputy.