



MAP OF Schindler's Subdivision of

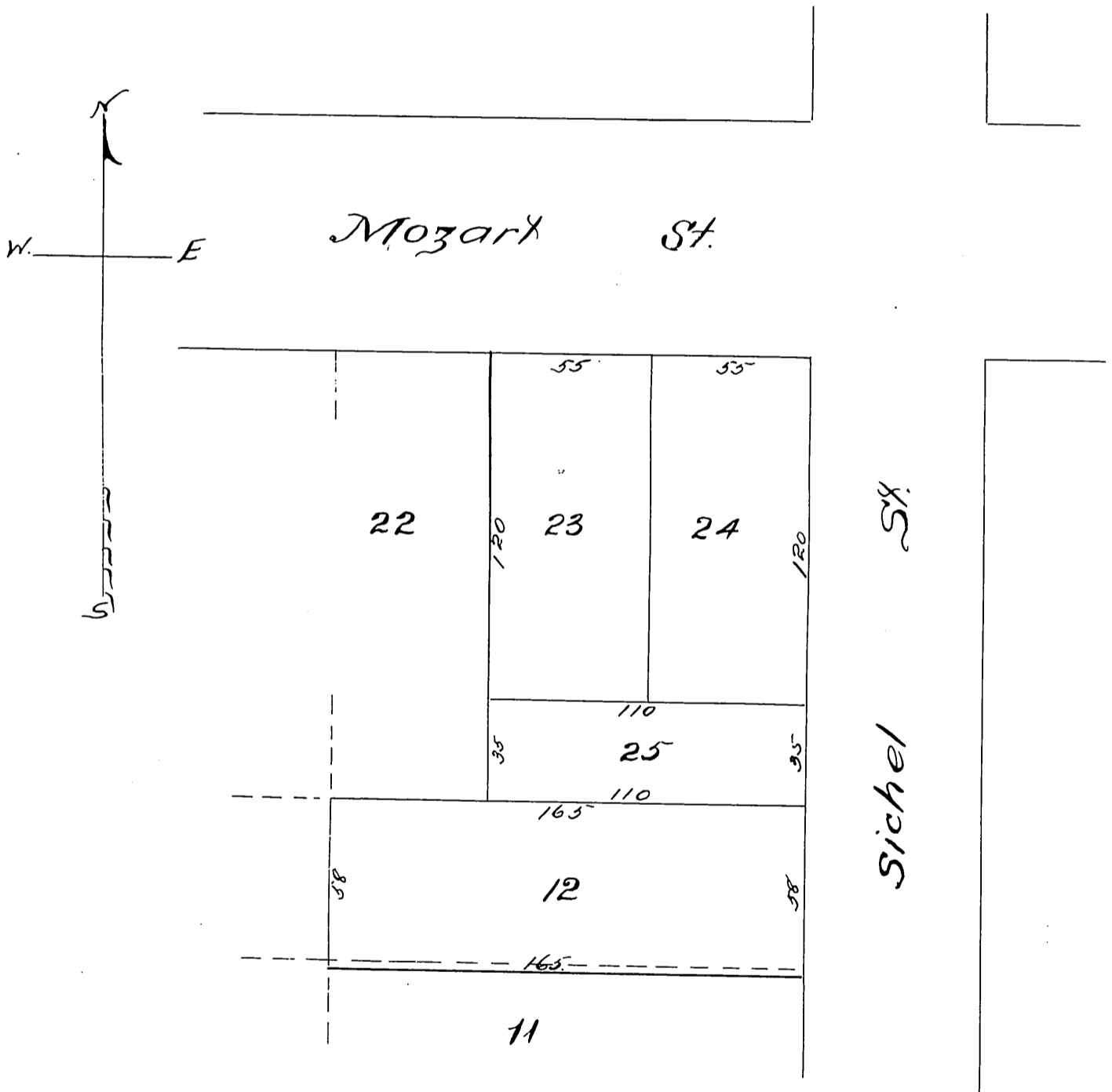
Lots 12, 23, 24 part of 11, Block 2

Pioneer Building Lot Ass'n.

Los Angeles, Cal.

H. J. STEVENSON, SURVY.

Scale 50 feet to one inch.



A full, true and correct copy of the original recorded Oct 19th 1887 at 8 Min past 9 A. M. at request of J. Schindler.

Frank A. Gibson County Recorder
by George Bugbee Deputy.