

MAP

OF

POMONA HEIGHTS

ADDITION

Los Angeles Co. California.

Jas. T. Taylor & Co., Surveyors

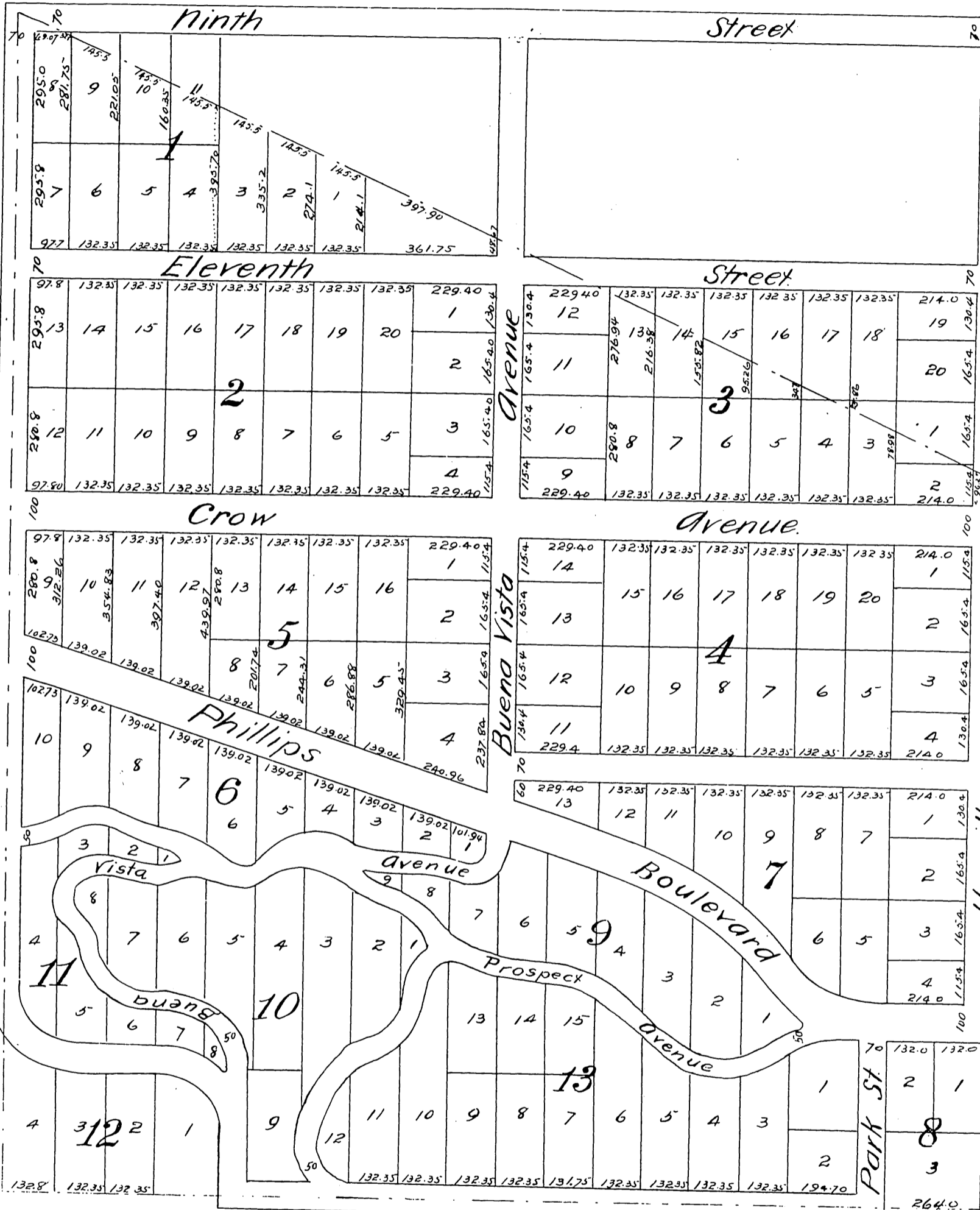
September 1887.

Scale 200 ft = 1 in.

Note. Being the property described in conveyance
Louis Phillips to H. A. Palmer dated Aug 20th
1887, recorded in Book 285 of Deeds, page 183
Los Angeles County Records.

Pomona Tract

Louis Phillips.



Addition to Pomona

Part of Phillips'

A full true and correct copy of the original (reduced to two thirds size) recorded October 19th 1887, at 53 Min past 10 A.M. at request of H. A. Palmer.
 Frank A. Gibson County Recorder
 by George Tugbee Deputy.