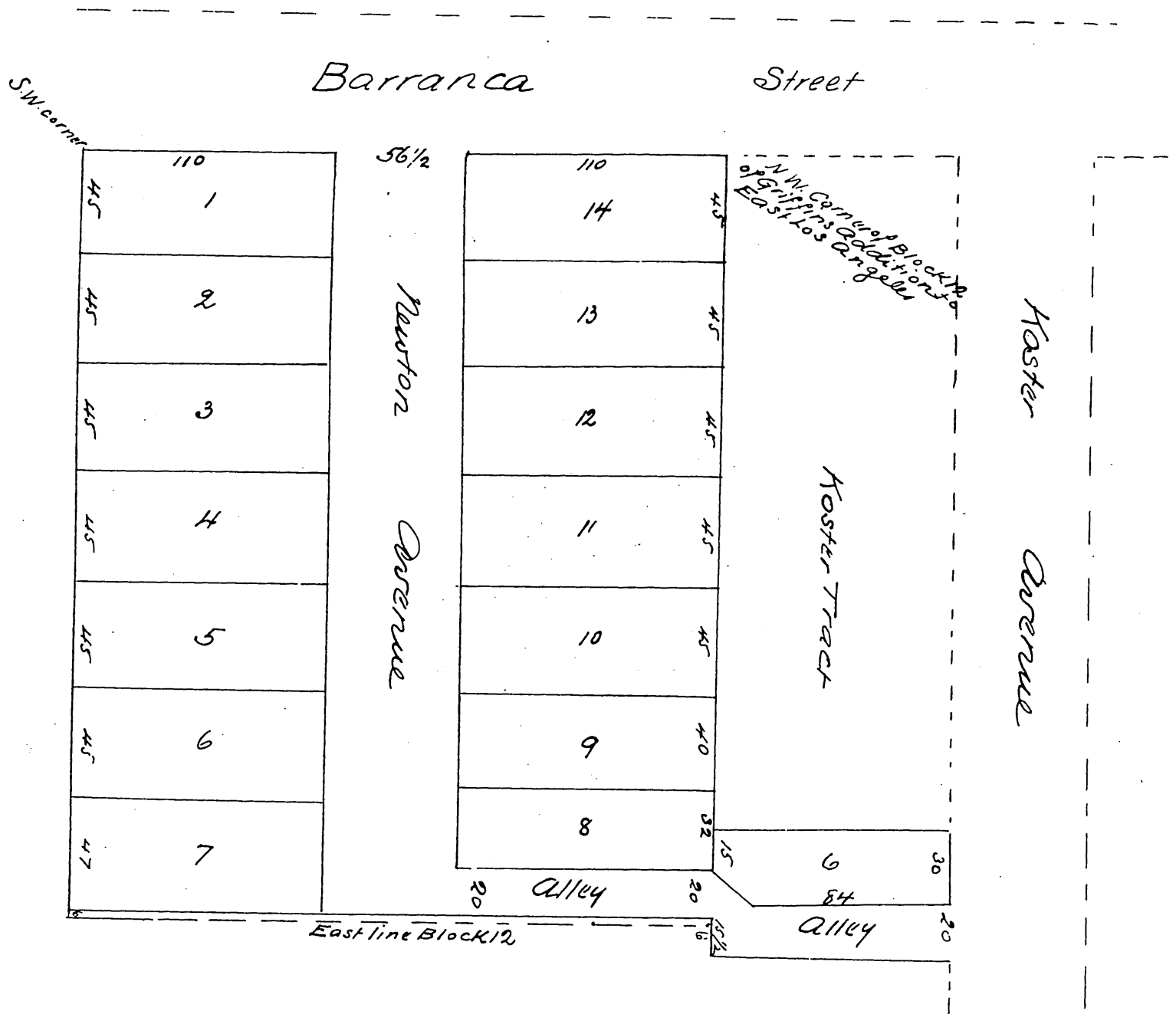


Map  
of  
Newton's Subdivision  
of Block 12  
Griffins Addition  
to  
East Los Angeles  
Surveyed by D.A. Sovereign C.E.



A full true and correct copy of the original recorded  
December 9<sup>th</sup> 1887 at 1:30 P.M. at request of Sherman Page  
Frank A. Gibson County Recorder  
by Wm. E. Johnston Deputy