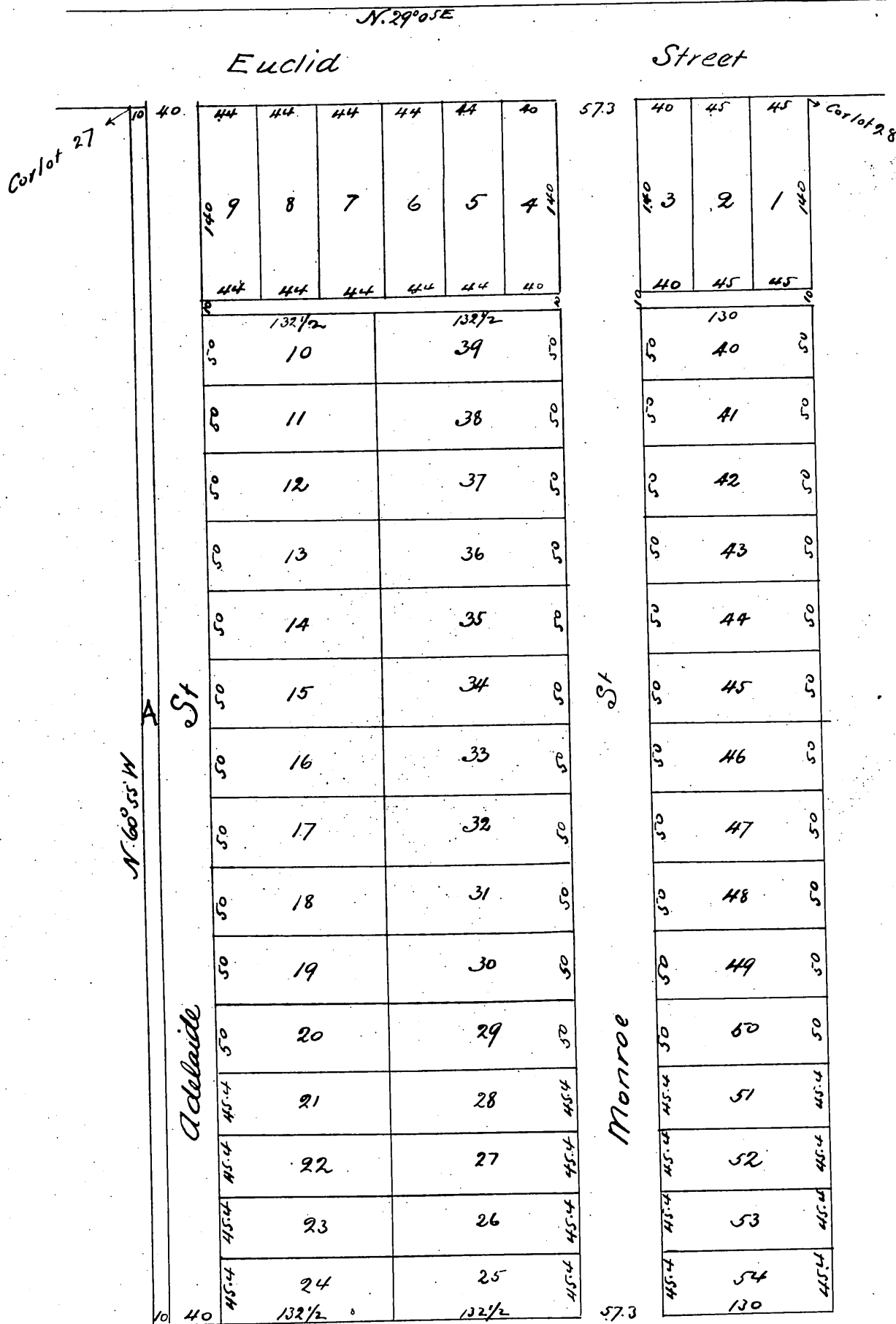


#2025

Euclid Heights

Being the subdivision of Lots 27 and 28 of Workman and Hellman's
 Subdivision of Lot 7 Block 72 Hancock's survey as recorded
 in Book 5 page 175 Miss Records of
 Los Angeles County.

Surveyed by Gertrude Purcell C.E.
 scale 100 feet to 1 inch



A full true and correct copy of the original recorded
 December 15th 1887 at 11:40 A.M. at request of N. H. Fairbanks
 Frank A. Gibson Co. Recorder
 by Wm. E. Johnston Deputy