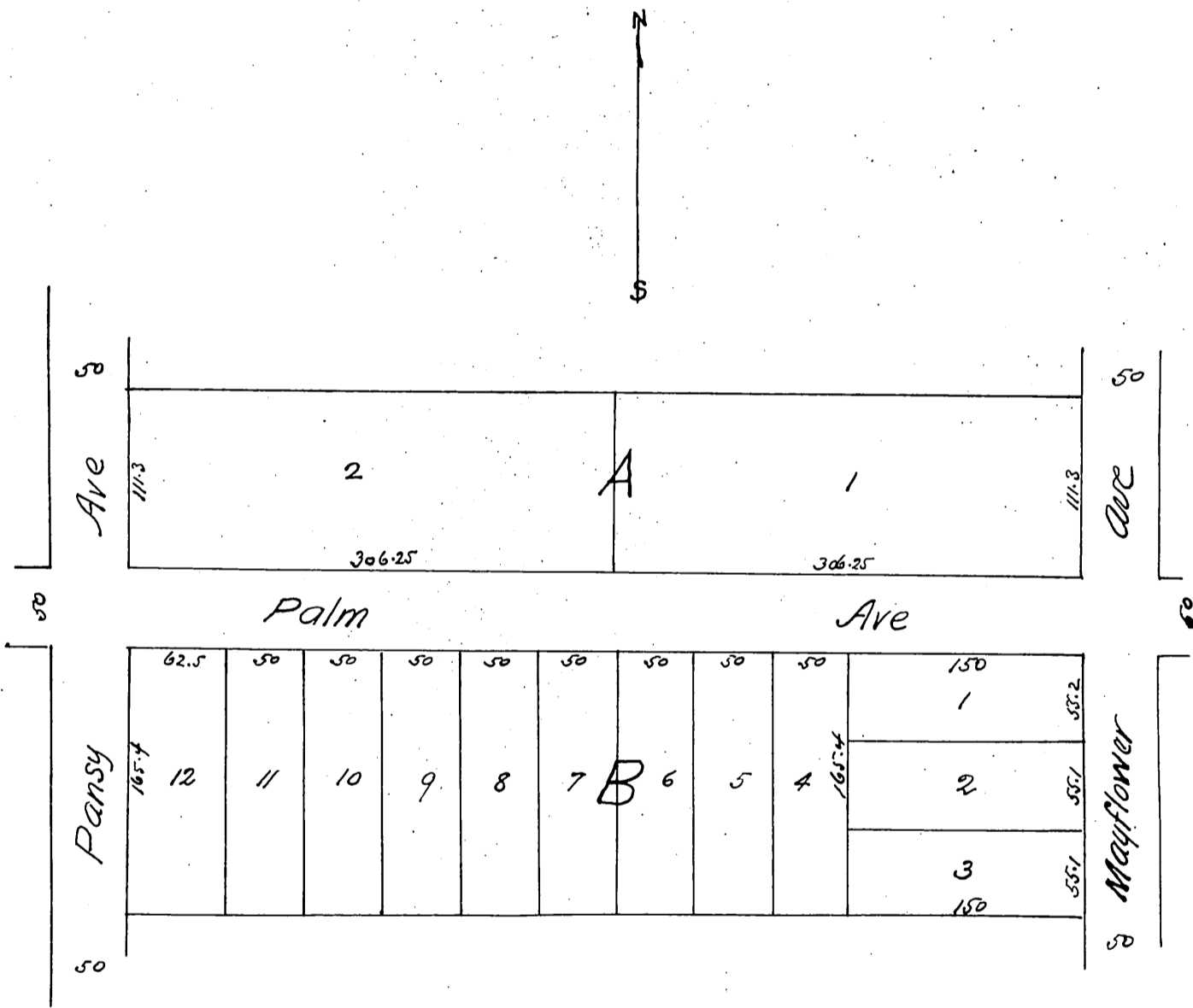


Brook Edmonston's Subdivision
of Lot C

Being a part of Lot 46 Santa Anita Tract
Los Angeles Co Cal

Surveyed by Charters & McDonald Monrovia

Scale 50 ft = 1 inch



A full true and correct copy of the original (reduced to
an exact 1/2 size) recorded December 17th 1887 at 10⁴⁴ a.m.
at request of B. Edmonston Frank A. Gibson Co. Recorder
by Wm. E. Johnston Deputy