

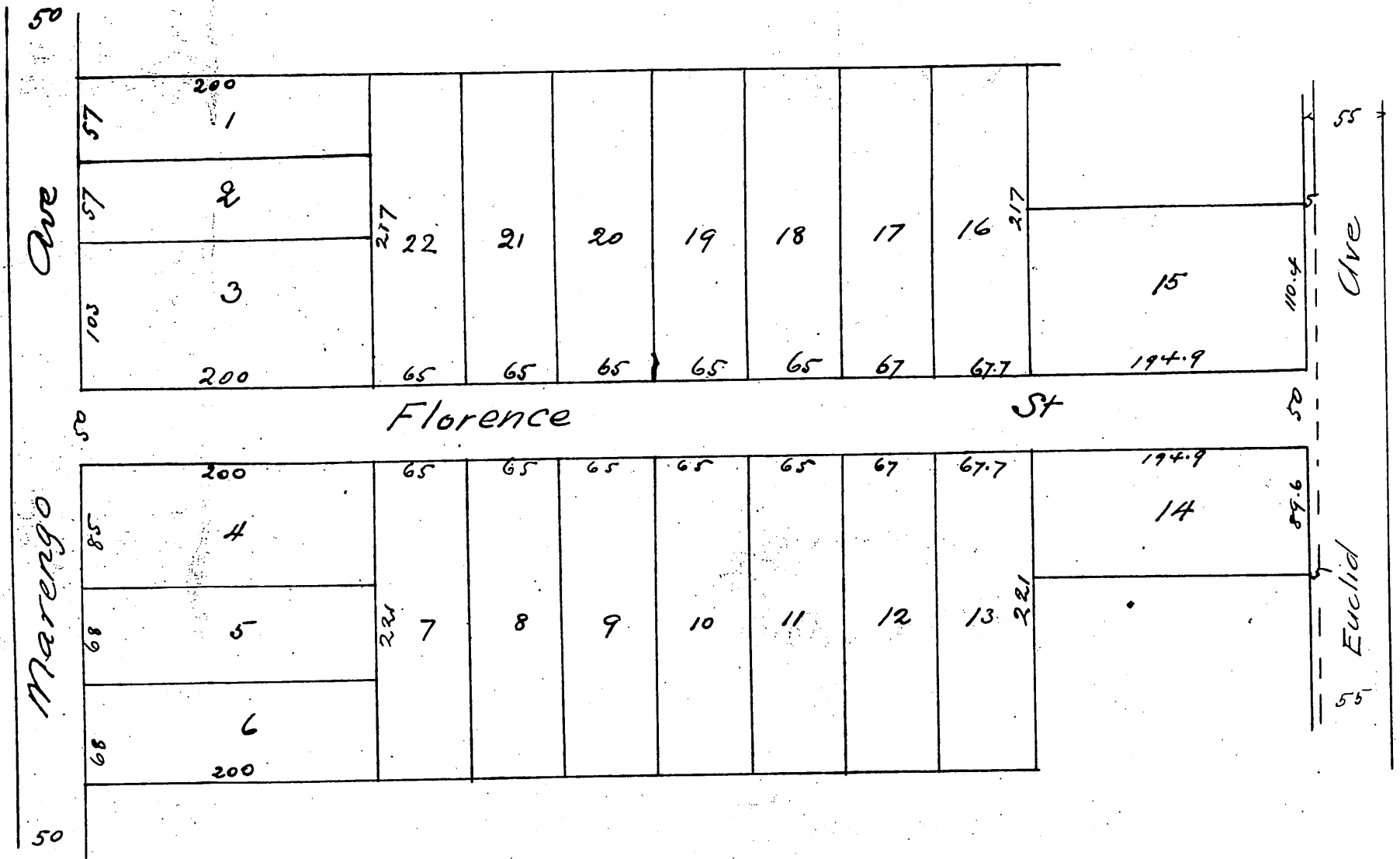
M. FISH'S RESUBDIVISION

of
Lots 5, 6, 7, 8, 9, 10 and 11

in
T. E. Metcalf's Subdivision
and
Lots 9, 10 & 11 in F. H. Heydenreich's Subdivision
Pasadena Cal.

Surveyed June 1887 by Riggins Bros.
Scale 100 ft to 1 inch

Combell and marsh draftsmen.



A full true and correct copy of the original recorded Feb 10th 1888 at 3 1/2 P.M. at request of M. Fish.

Frank A. Gibson County Recorder
by Wm. E. Johnston Deputy