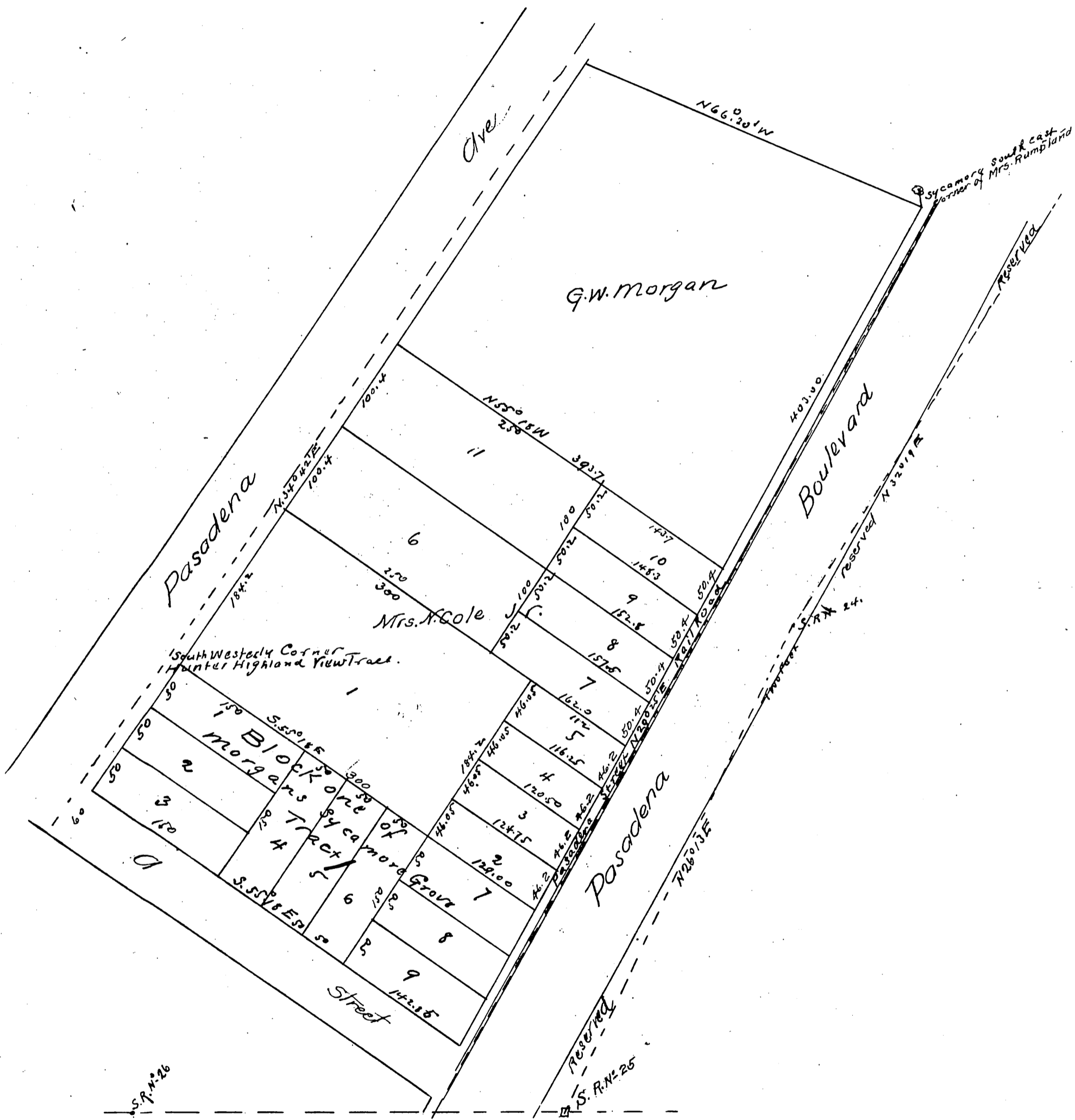




Map
 of
 Nathan Cole Jr's Subdivision
 of
 Lot 53 of the Hunter Highland View Tract

Surveyed Feb. 1st 1888 by L. Friel
 scale 100 feet to 1 inch



A full, true and correct copy of the original recorded
 Feb. 13th 1888 at 3⁴⁹ P.M. at request of Nathan Cole Jr. and
 G.W. Morgan

Frank A. Gibson Co Recorder
 by Wm E. Johnston Deputy.