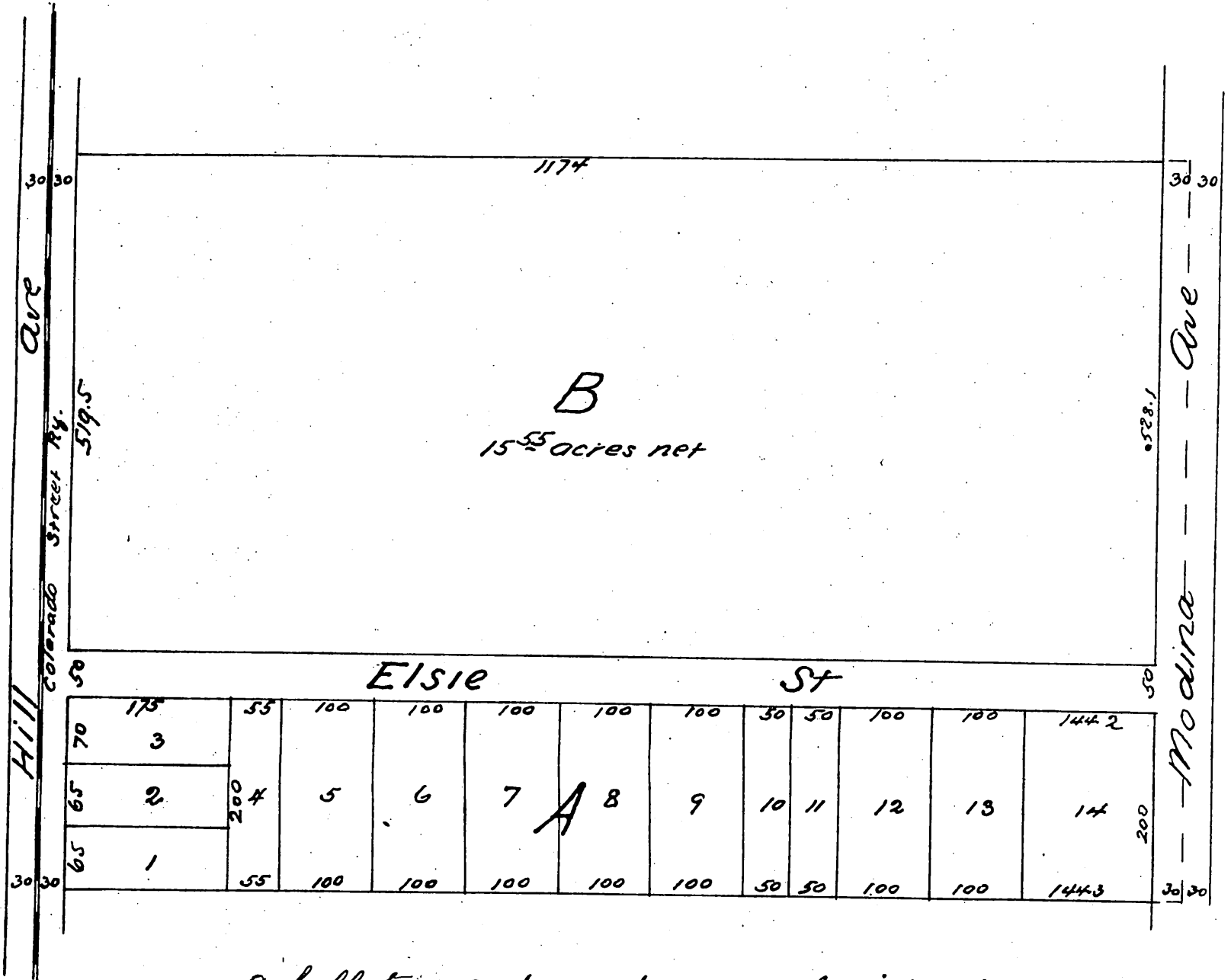


# E. H. Royce Subdivision

Being the 2184 acre tract described in Book of Deeds No 82  
page 103 Los Angeles County Records and deeded Aug 29 1881  
by A. B. Grogan to E. H. Royce Pasadena Cal.  
Surveyed March 1888 by Mount Drummond

Scale 100 ft = 1 inch



a full true and correct copy of the original (reduced to 150 ft to one inch) recorded March 28<sup>th</sup> 1888 at 10<sup>41</sup> A M at request of E. H. Royce

Frank A. Gibson Co. Recorder  
by Wm E. Johnston Deputy