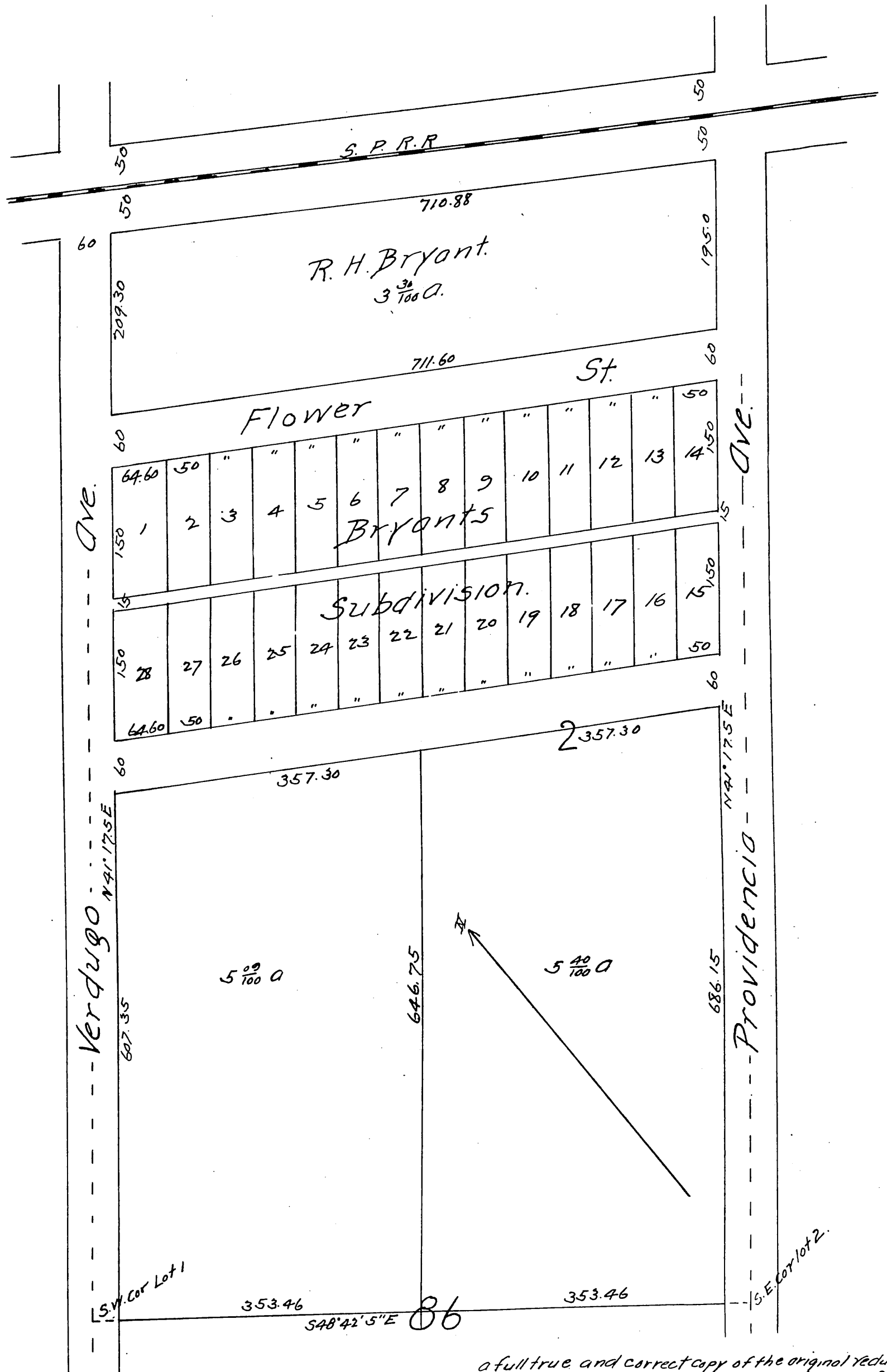


# MAP

of the Providencia Land Water and Development Co's  
Subdivision of lots 1 and 2, BIK 86 of the Scott Tract.

Being amendatory to a map of the same lots as re-  
corded in Book 17, Pages 15, 16, 17 and 18 Los Angeles  
Co Cal Records.



a full true and correct copy of the original reduced  
to the scale of 120 ft to one inch, Recorded July 25, 1888 at  
29 min Post 12 m at request of R. G. Lunt.  
Frank O. Gibson County Recorder.  
By George Bugbee, Deputy.