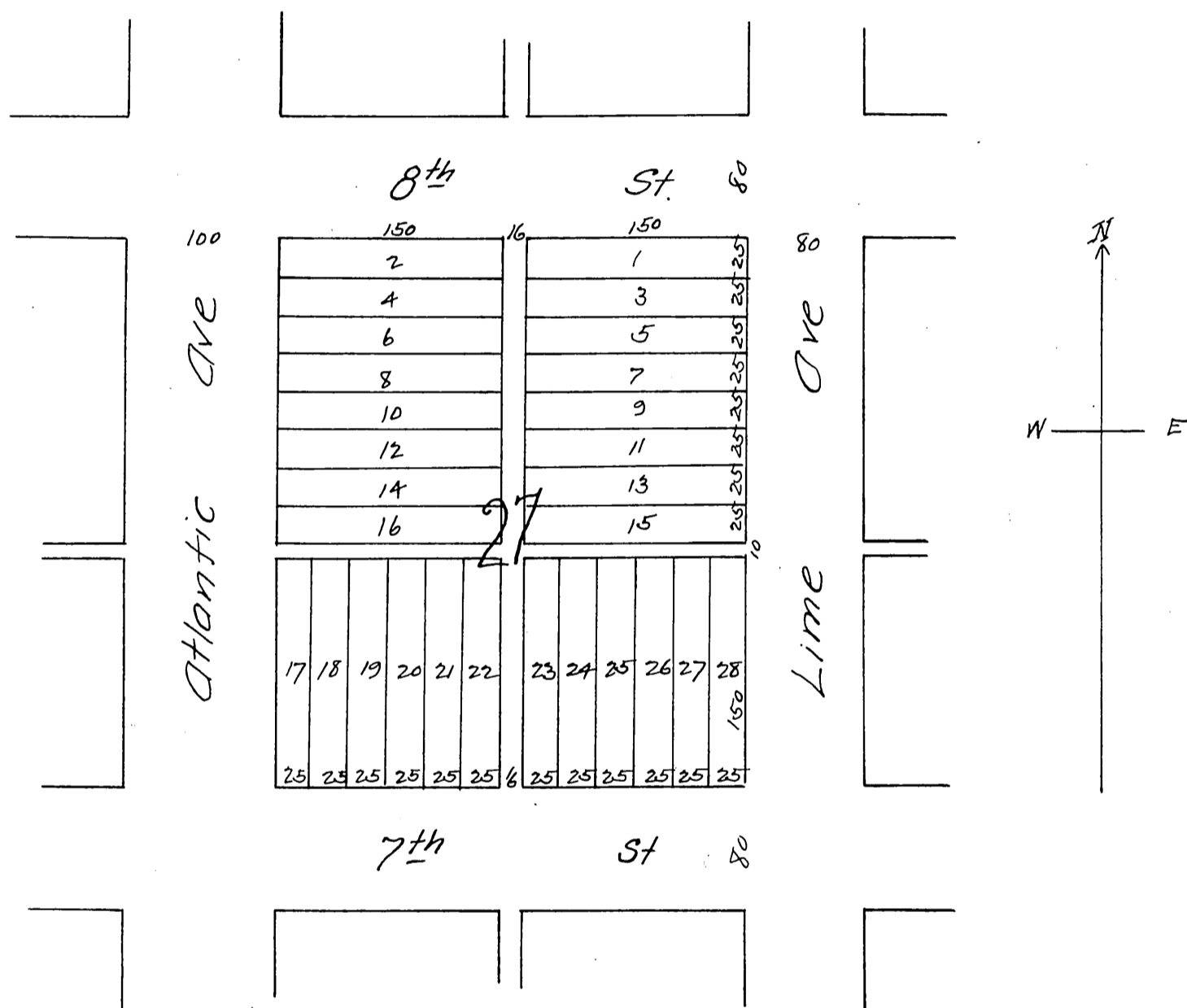




PLAT
OF
Reed & Beeson's Subdivision
of Blocks 1 and 27 in the Town of Long Beach
Los Angeles Co. Cal.

Charles T. Hedley Surveyor August 10th 1887



A full, true and correct copy of the original
Recorded July 26, 1888 at 42 min Past 10 Am
at request of W. E. Beeson.

Frank O Gibson County Recorder.
By George Bugbee Deputy.