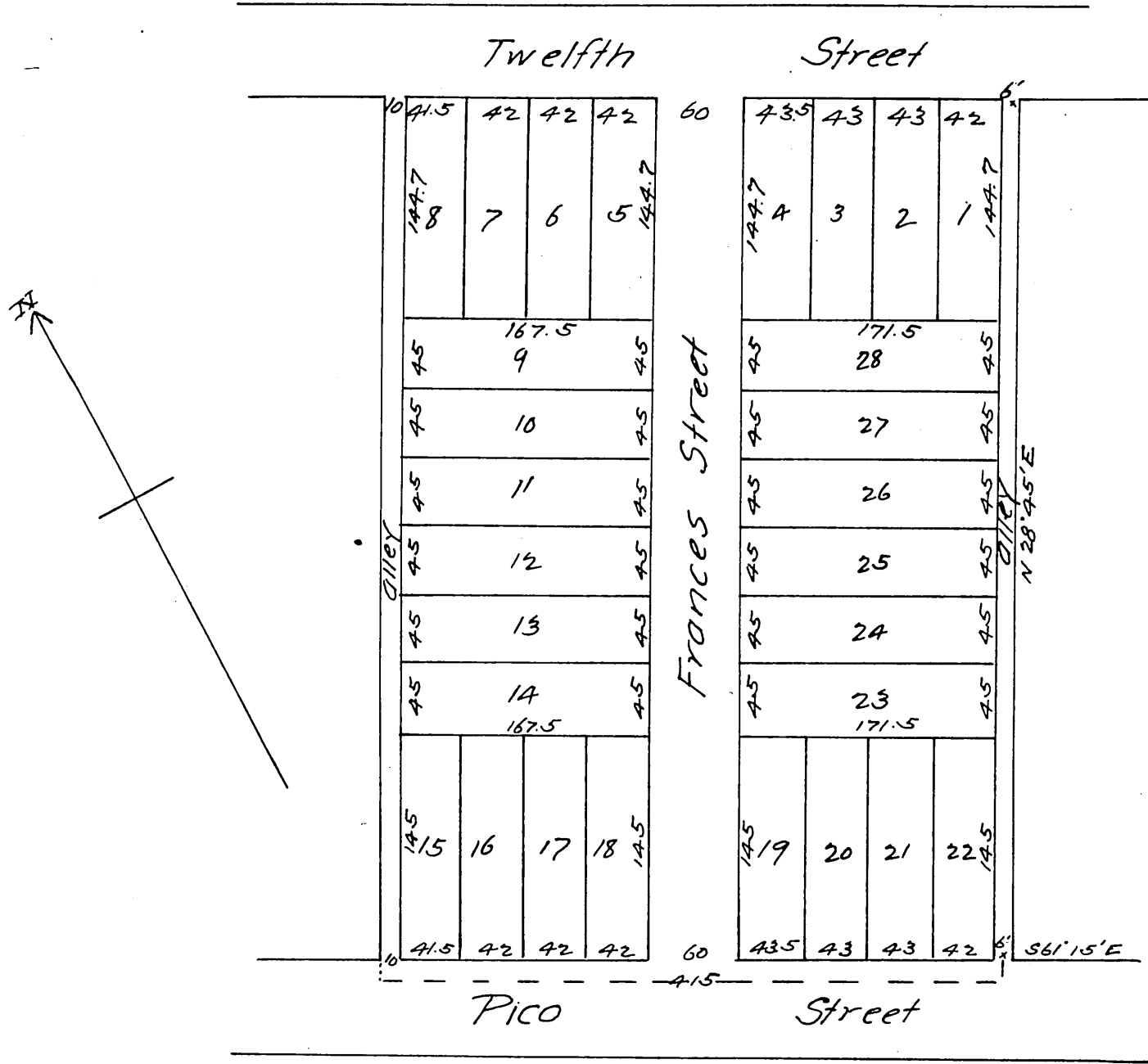


# Victoria Tract

Being the subdivision of part of Lot 5, Block 36 Hancock's Survey as described in Book 215 Page 642 of Deeds, Los Angeles County Records.

Gervaise Purcell C.E. Oct 1887.

Scale 100 feet to 1 inch.



A full, true and correct copy of the original.  
 recorded August 1, 1888 at 22 min past 1 P.M.  
 at request of Mrs M.C.A. McD Spencer.  
 Frank O. Gibson County Recorder  
 By George Bugbee Deputy