

MAP

OF

Section 4. Township No 3 South Range No 14 West S.B.M.

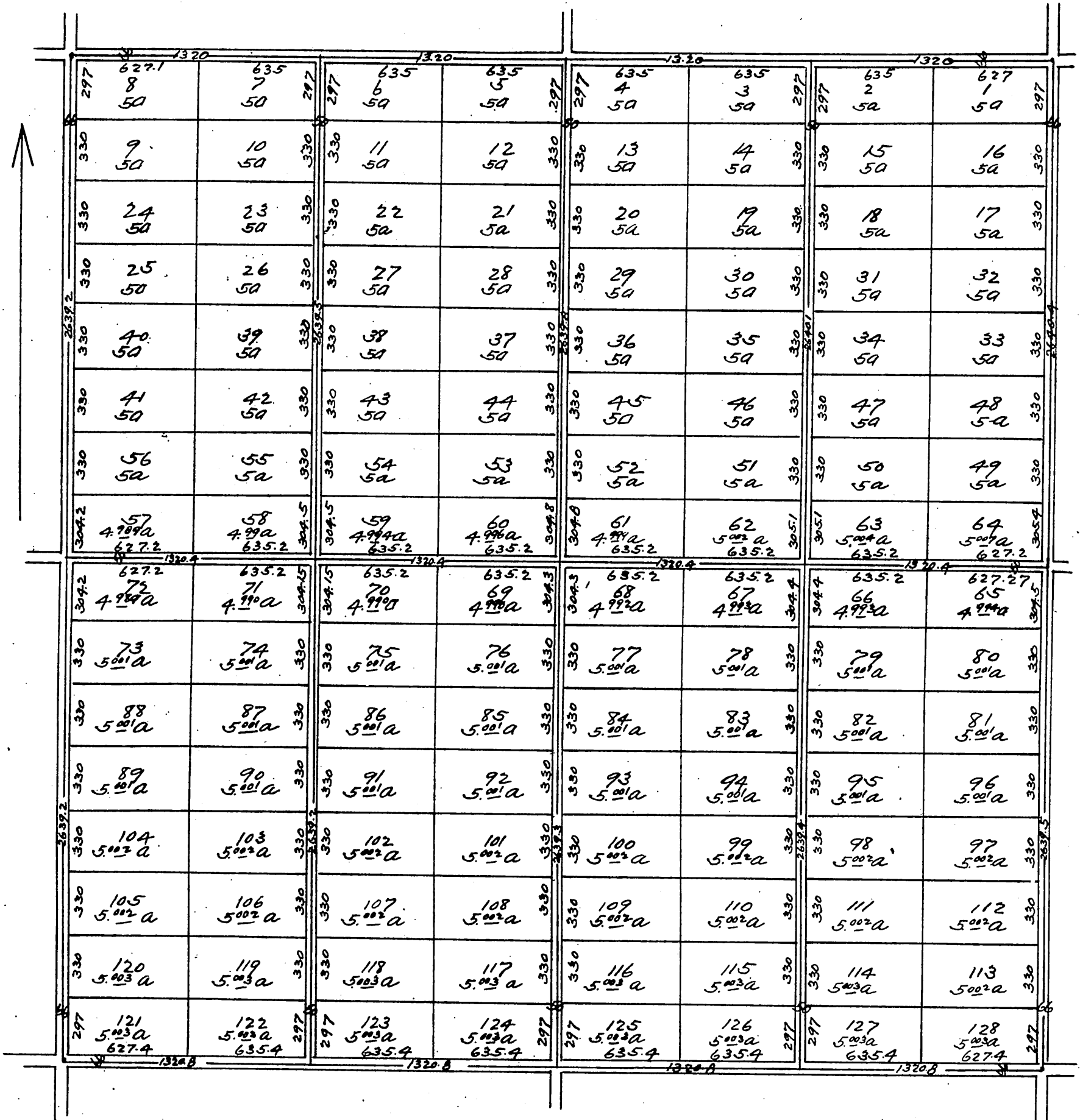
Showing subdivision of section into 5 acre tracts.

All calculations of quantities to center of streets

Distances in feet and tenths.

Scale one inch = 200 feet.

June 21st 1888.



a full true and correct copy of the original.
(reduced to the scale of 600 feet to one inch)
recorded August 18, 1888 at 14 min past 10 o'clock,
at request of E. J. Cox.

Frank A. Gibson County Recorder.
By George Bugbe Deputy