

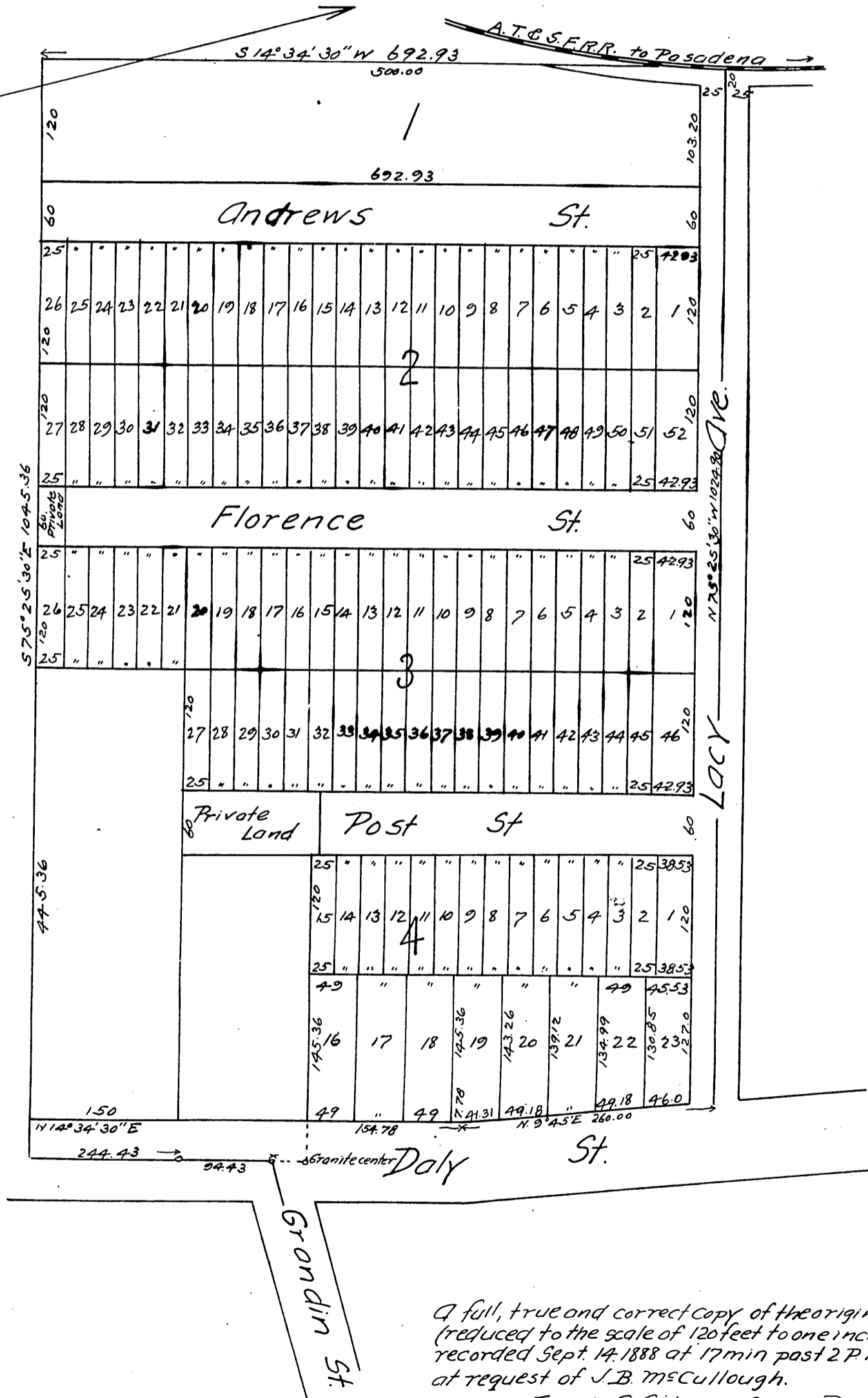
MAP OF DALY ST. TRACT

Being a subdivision of Lots 4 and 5
Griffins Arroyo Seco Tract.

East Los Angeles Cal.

Surveyed by McClure Bros October 1887

Scale 60 feet to 1 inch



A full, true and correct copy of the original
(reduced to the scale of 120 feet to one inch)
recorded Sept. 14, 1888 at 17 min past 2 P.M.
at request of J.B. McCullough.

Frank A Gibson, County Recorder.
By George Ringlee Deputy.