

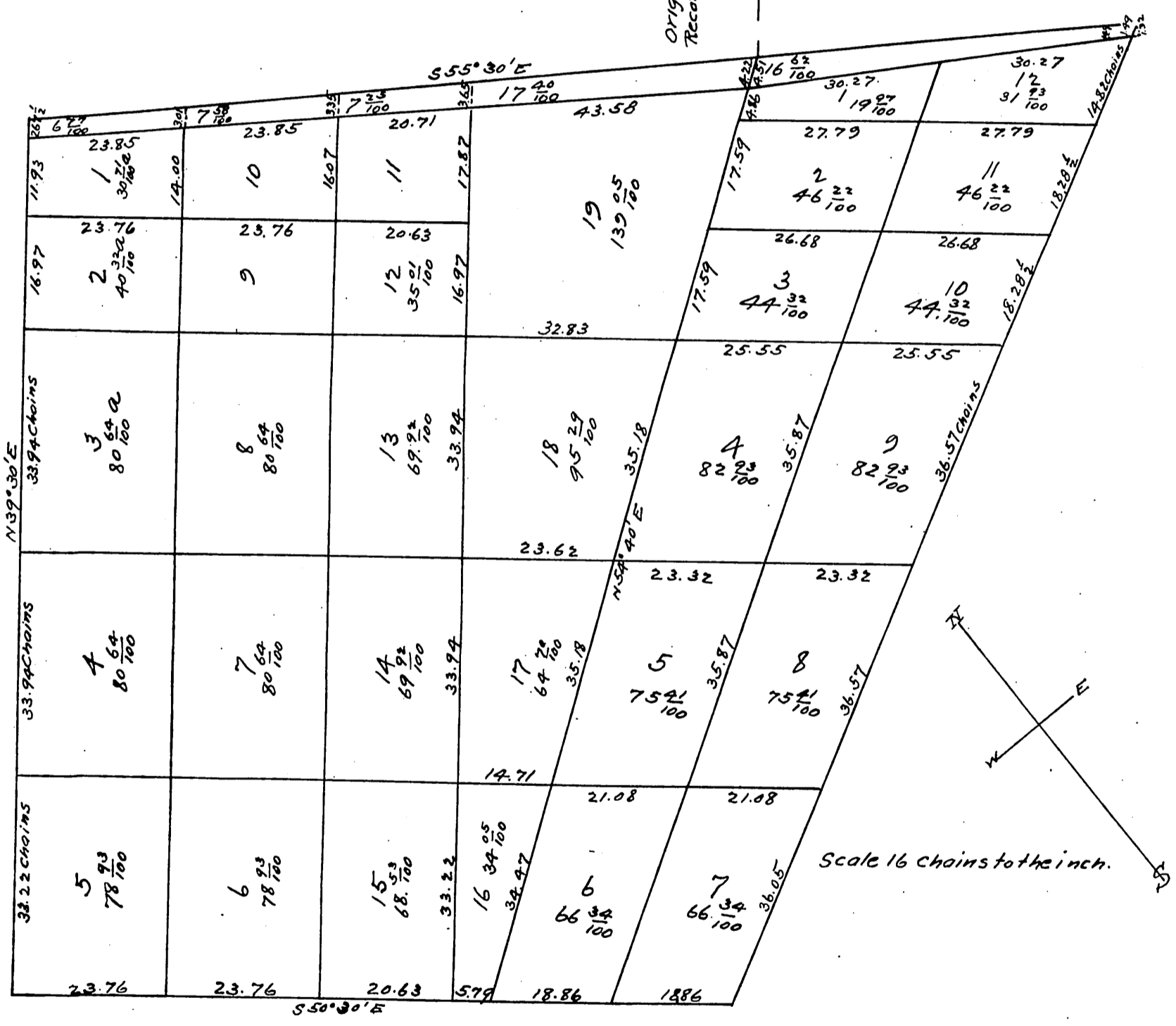
A resurvey of Gunn & Hazzards Plot of the Cullen Tract, being a part of the Colima Tract of the Santa Gertrudes Grant.

Roads 30 feet wide on all lines between lots, excepting between lots 3 & 4, 4 & 5 and 4 & 7

A resurvey of Gunns Plat of the Blaisdell Tract, known as the J. W. Hellman Tract of the Colima Tract of the Santa Gertrudes Grant Los Angeles Co

Roads 30 feet wide on all lines between lots.

Original Plat recorded in Miscellaneous Records of Los Angeles Co California Book 5 Page 406



Surveyed in July and August 1887
D.O. Sovereign.
Surveyor.

A full, true and correct copy of the original, (reduced to the scale of 20 chs to one inch) recorded Sept 27, 1888 at 9 min past 2 P.M. at request of Hazzard & Gunn.

Frank A. Gibson County Recorder
By George Ringlee Deputy.