

# MAP

OF THE

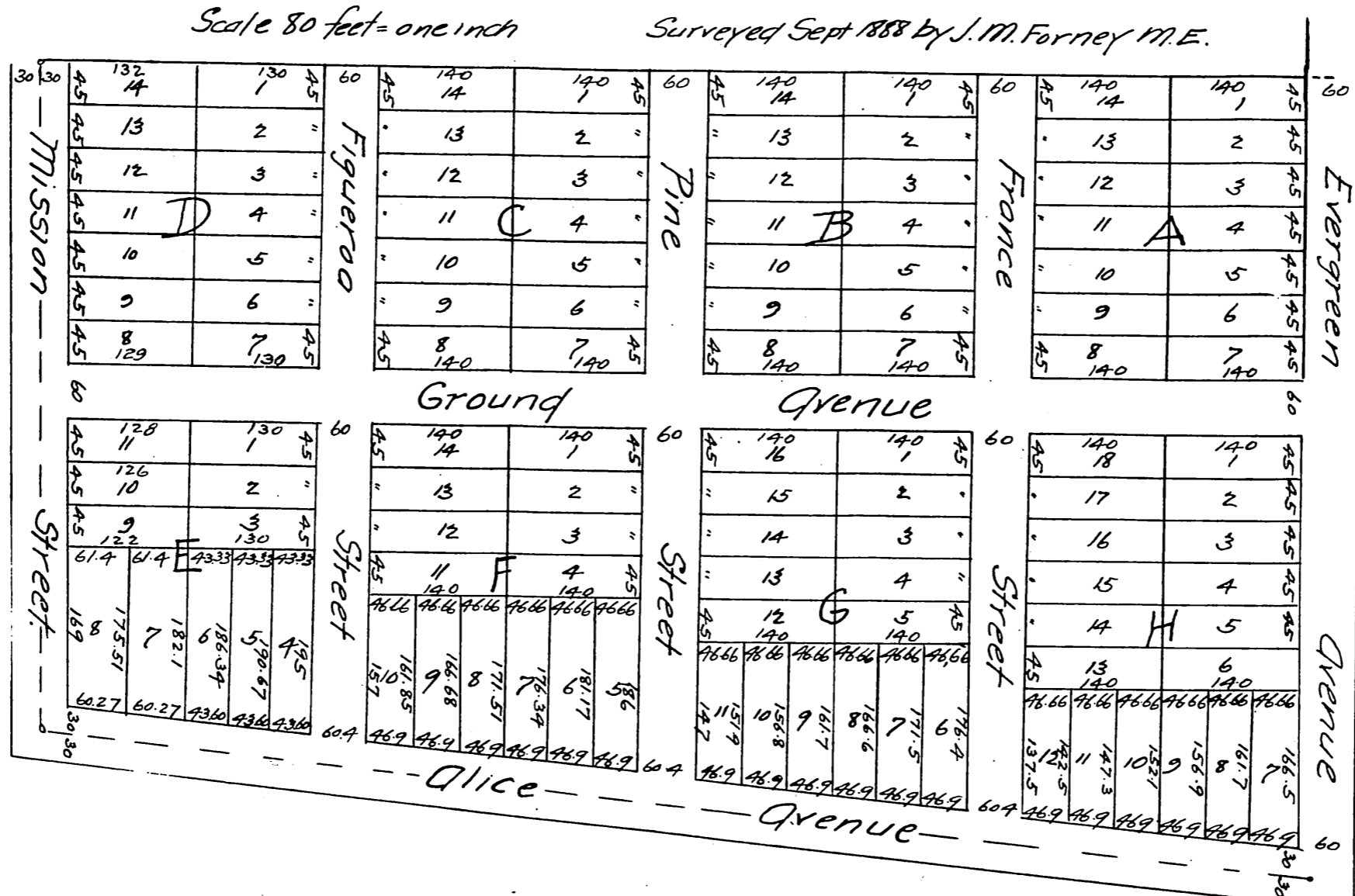
## Grimeaud Tract

Being a Sub-Division of Lot 4, Sec. 21 T. 2. S. R. 14. W. S. B. M.  
of S.P.R.R. Co Lands adjoining Inglewood Los  
Angeles Co California.

owned by Germain Grimeaud

Scale 80 feet = one inch

Surveyed Sept 1888 by J. M. Forney M.E.



A full, true and correct copy of the original  
(reduced to the scale of 150 feet to one inch)  
recorded Oct 1, 1888 at 35 min Past 10 A.M.  
at request of G. Grimeaud.

Frank A. Gibson, County Recorder.  
By George Bugbee Deputy.

