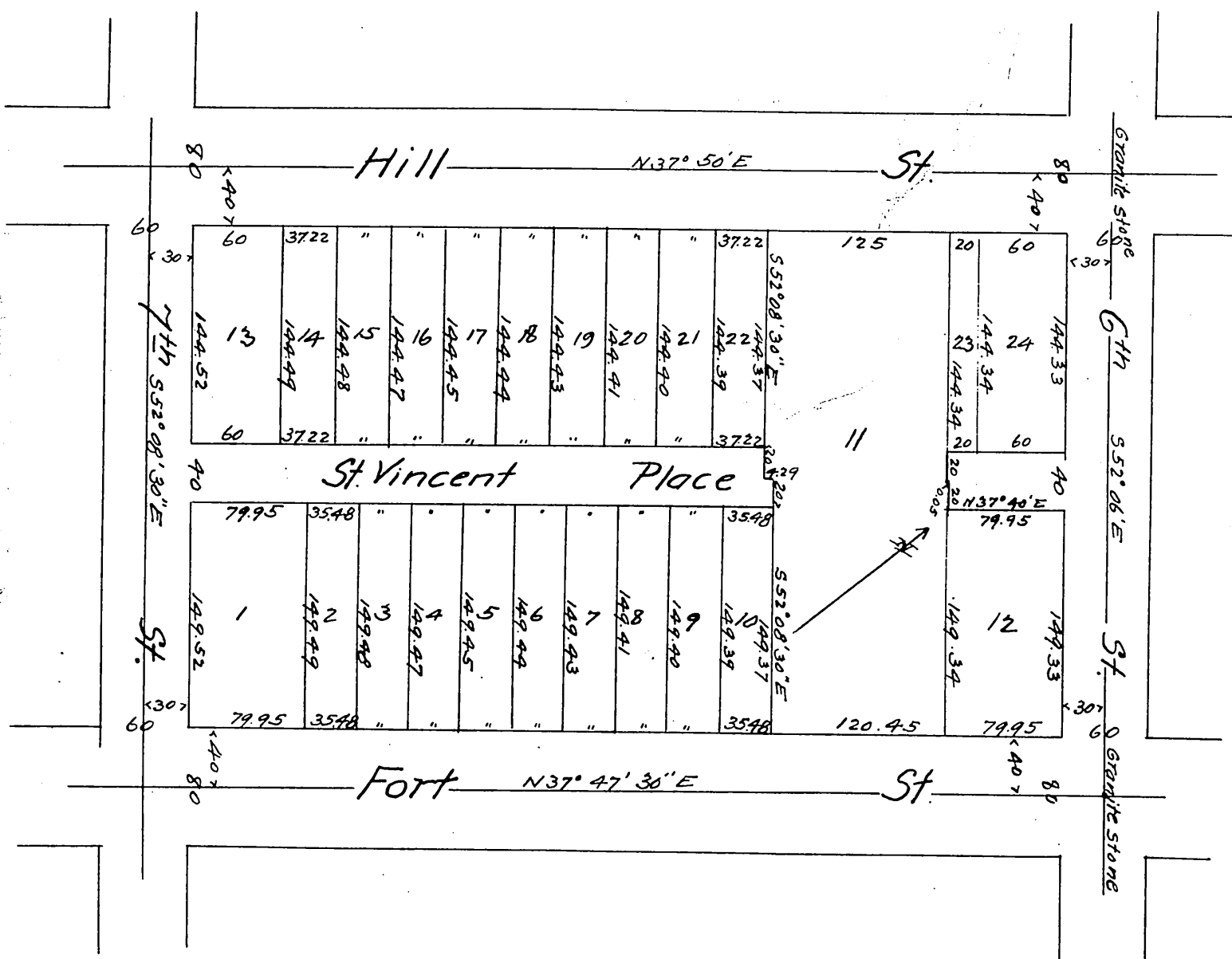


# Plat

## showing subdivision of Block 18, Ords Survey

Subdivided in Oct 88 by Eaton and Lowmes.

Scale 20'-1"



A full, true and correct copy of the original,  
(reduced to the scale of 100 feet to one inch)  
Recorded Oct 23, 1888 at 41 min past 1 P.M.  
at request of Hervey Lindley.

Frank A. Gibson, County Recorder.  
By George Bugbee, Deputy.