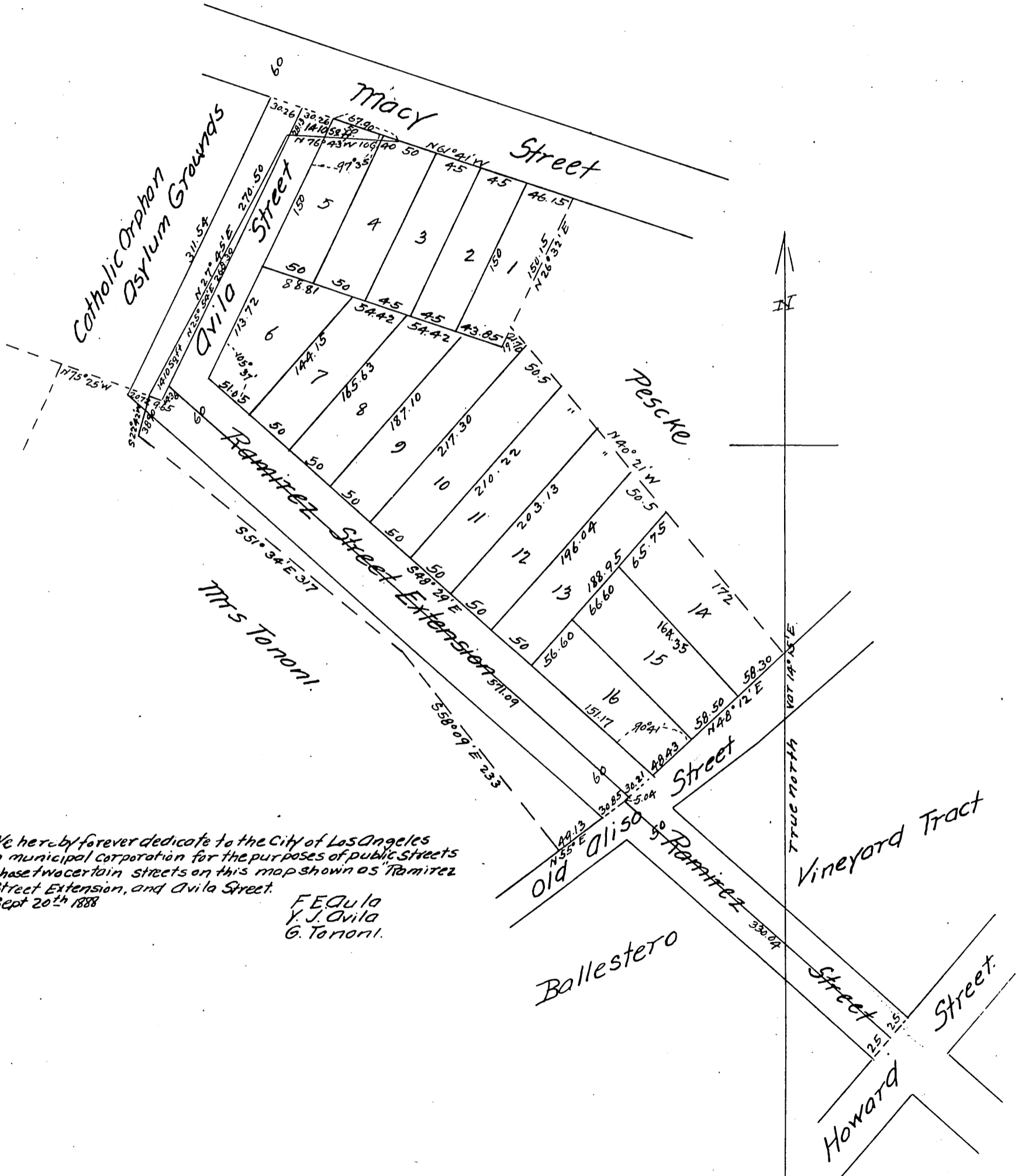


MAP
 of subdivision of a part of the
 Estate of Ynuario Avila Decd.
 in
 Los Angeles City, California

Resurveyed in Sept 17th 1887 by J. A. Bernal.
 Scale 50 feet = 1 inch



We hereby forever dedicate to the City of Los Angeles
 a municipal corporation for the purposes of public streets
 those two certain streets on this map shown as Ramirez
 Street Extension, and Avila Street.
 Sept 20th 1888

F. C. Avila
 Y. J. Avila
 G. Tomoni.

A full, true and correct copy of the original,
 recorded Oct 23, 1888 at 36 min past 3 P.M.
 at request of G. Tomoni
 (reduced to the scale of 100 feet to one inch)
 Frank Gibson, County Recorder.
 By George Bugbee Deputy.