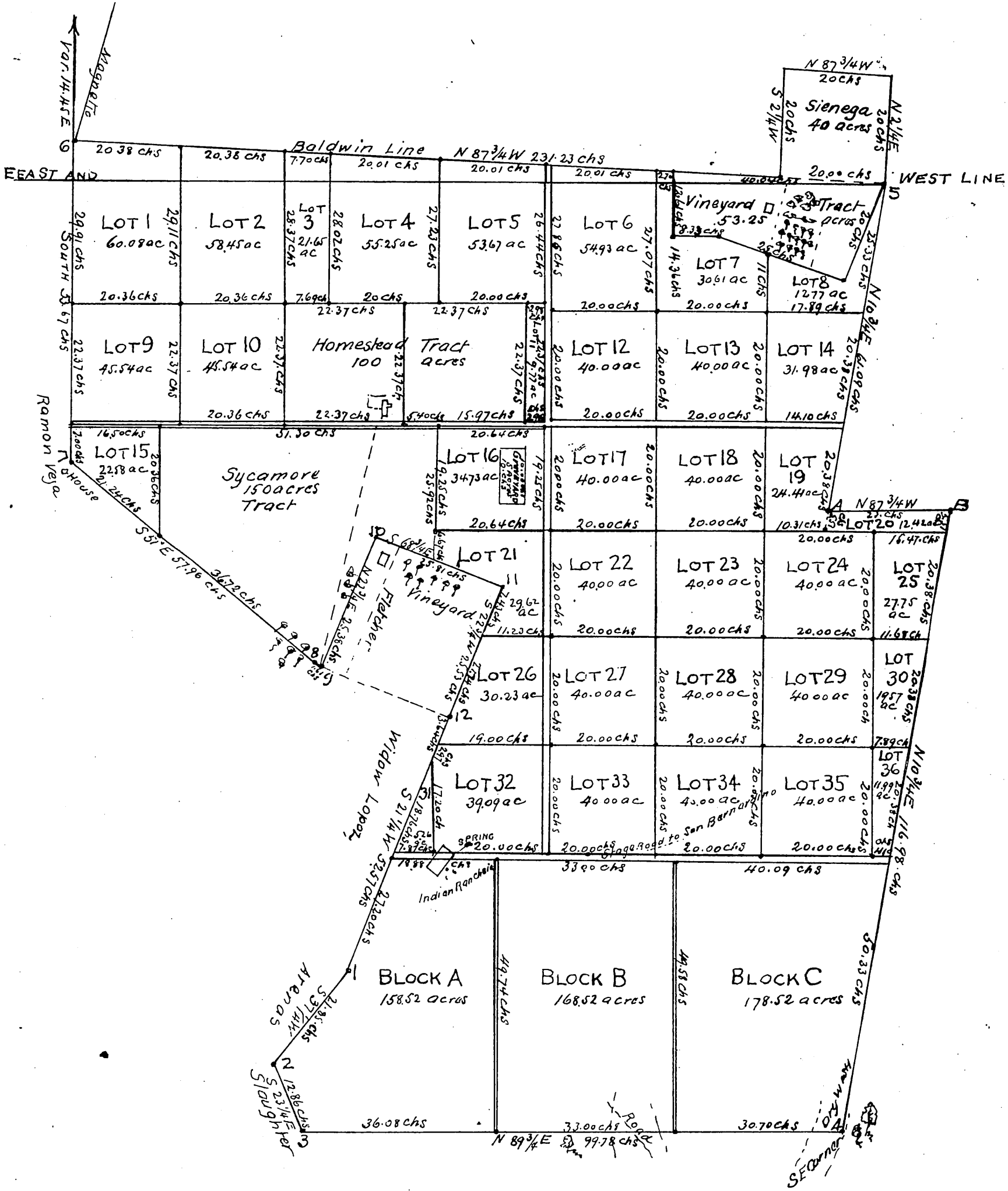


This Map represents that portion of the land described in the deed from Concepcion Palomares and Francisco Palomares to A.R. Meserve and C.F. Loop, which has been partitioned by said Loop and Meserve

E Hadley Surveyor
November & December 1874



A full true and correct copy of the original recorded Jan'y 21 AD 1875 at 25 min past 4pm at request of A.R. Meserve & C.F. Gillette to Recorder By D.S. Lovejoy Deputy