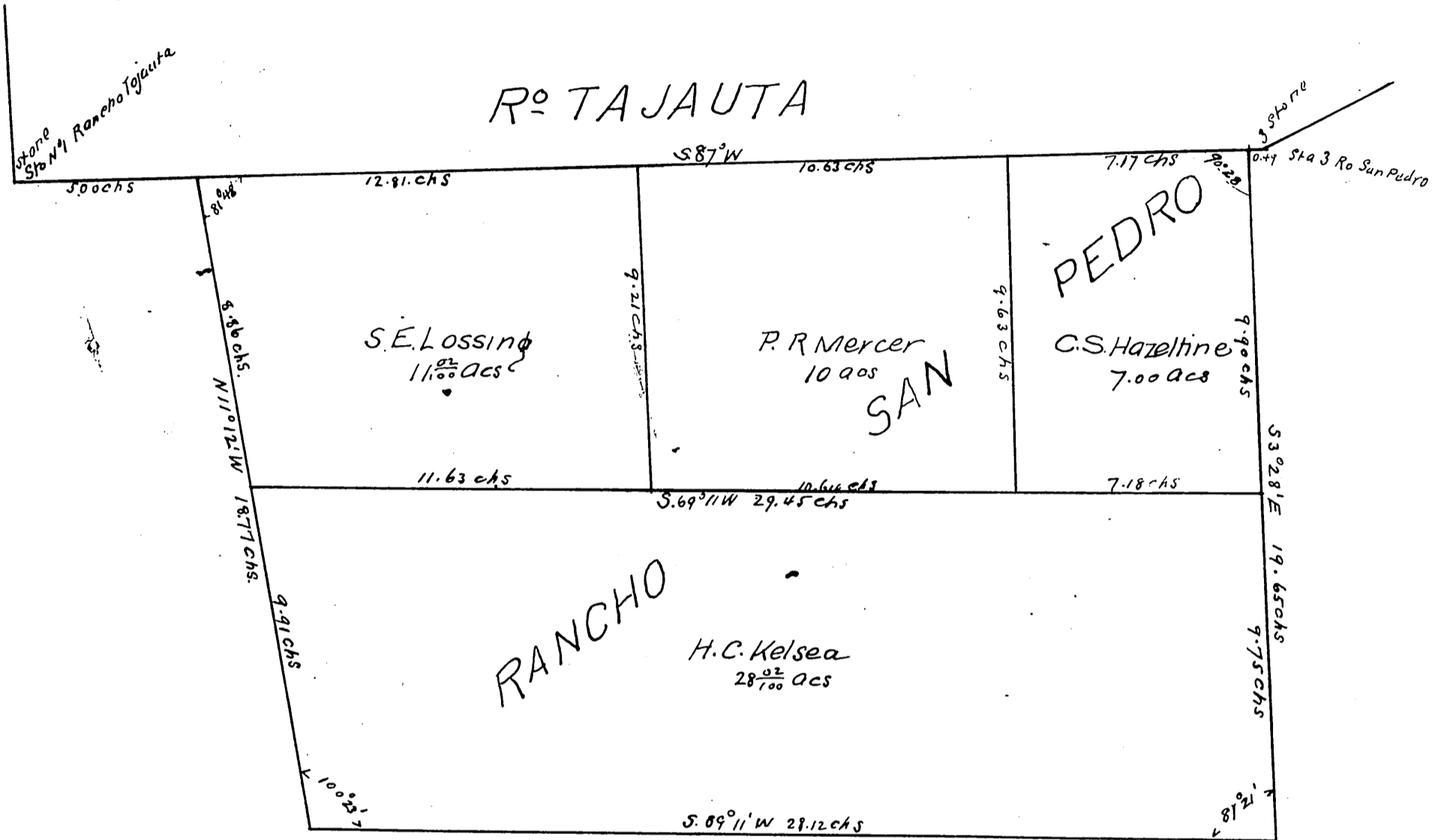


Map of the  
N.W. 1/4  
OF  
Lot 1, Temple & Gibson Tract

Rancho San Pedro  
As surveyed by Harry F. Stafford,  
County Surveyor June 647



A full true and correct copy of original  
recorded Jun 15 1892 at 56 min past 10.00 AM  
at request of S. E. Lossing  
J. A. Kelly County Recorder  
By W. W. Mills Deputy