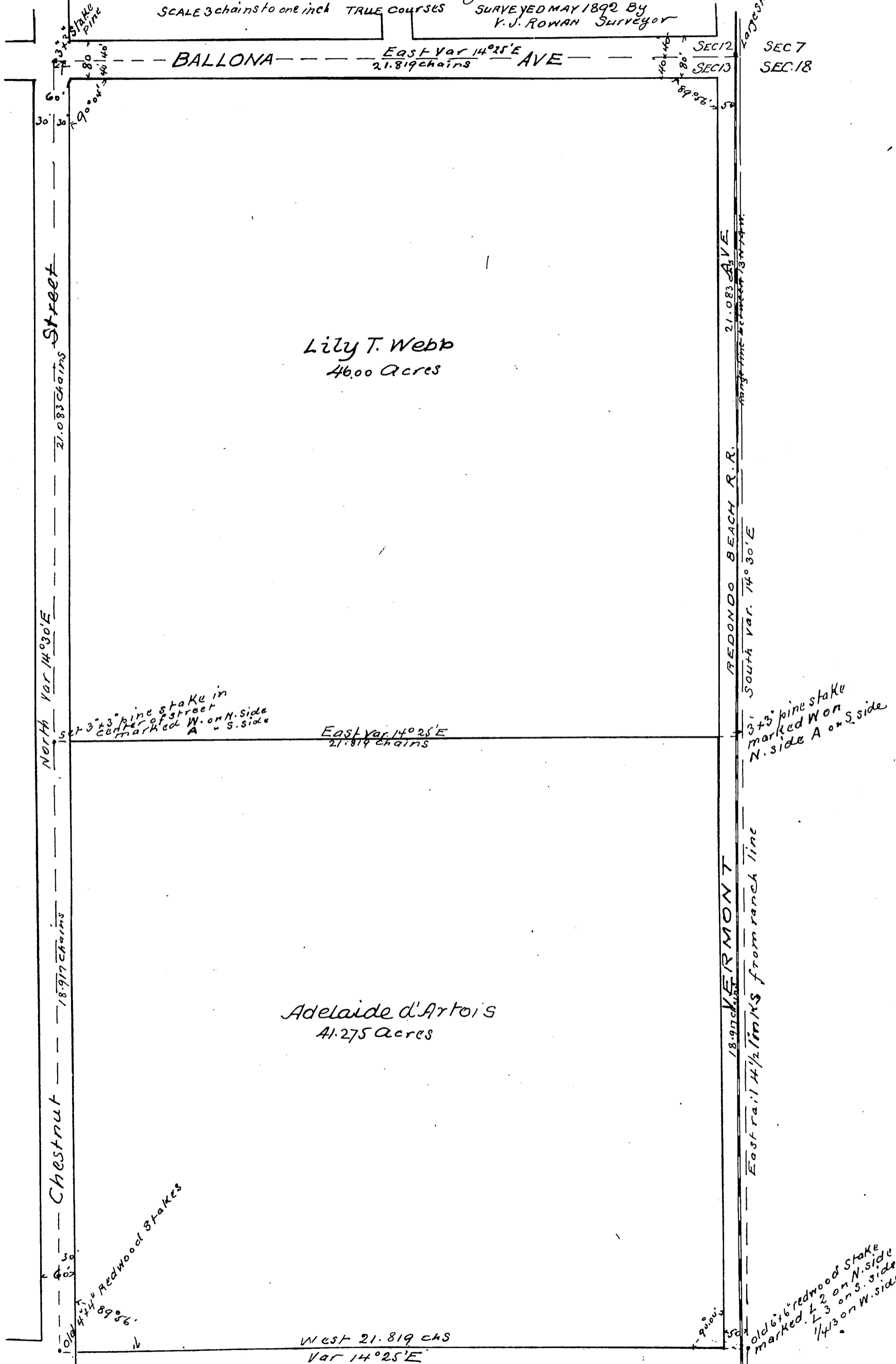


# map of a resurvey of that portion of the TOWNSITE of ROSECRANS

Located in the East 87,275 Acres of the NE 1/4 of Section 13 T3S R14W.S.B.M  
Showing the above described land after the abandonment of the streets  
and lot and block lines by the Hon Board of Supervisors of the County of  
Los Angeles, State of California on the 14<sup>th</sup> day of June A.D. 1892

SCALE 3 chains to one inch TRUE COURSES SURVEYED MAY 1892 By  
V.J. ROWAN Surveyor



Large stake marked S. 12. S. 1  
S. 13 S. 18

21.083 chains  
REDONDO BEACH R.R.  
South Var. 14° 30' E

3x3 pine stake  
marked W on N. side  
N. side A on S. side

18.977 chains  
VERMONT  
East rail 1/2 miles from ranch line

old 6x6 redwood stake  
marked L 2 on N. side  
L 3 on S. side  
1/4 on W. side

Note Acreage calculated to center of streets  
except on east side where the same is  
calculated to the range line between Ranges  
13 and 14 W. S. B. M.

A full true and correct copy of  
original recorded June 29. 1892  
at 6 min past 11 a.m. at request  
of D. P. Hatch  
J. A. Kelly County Recorder  
by W. W. n.