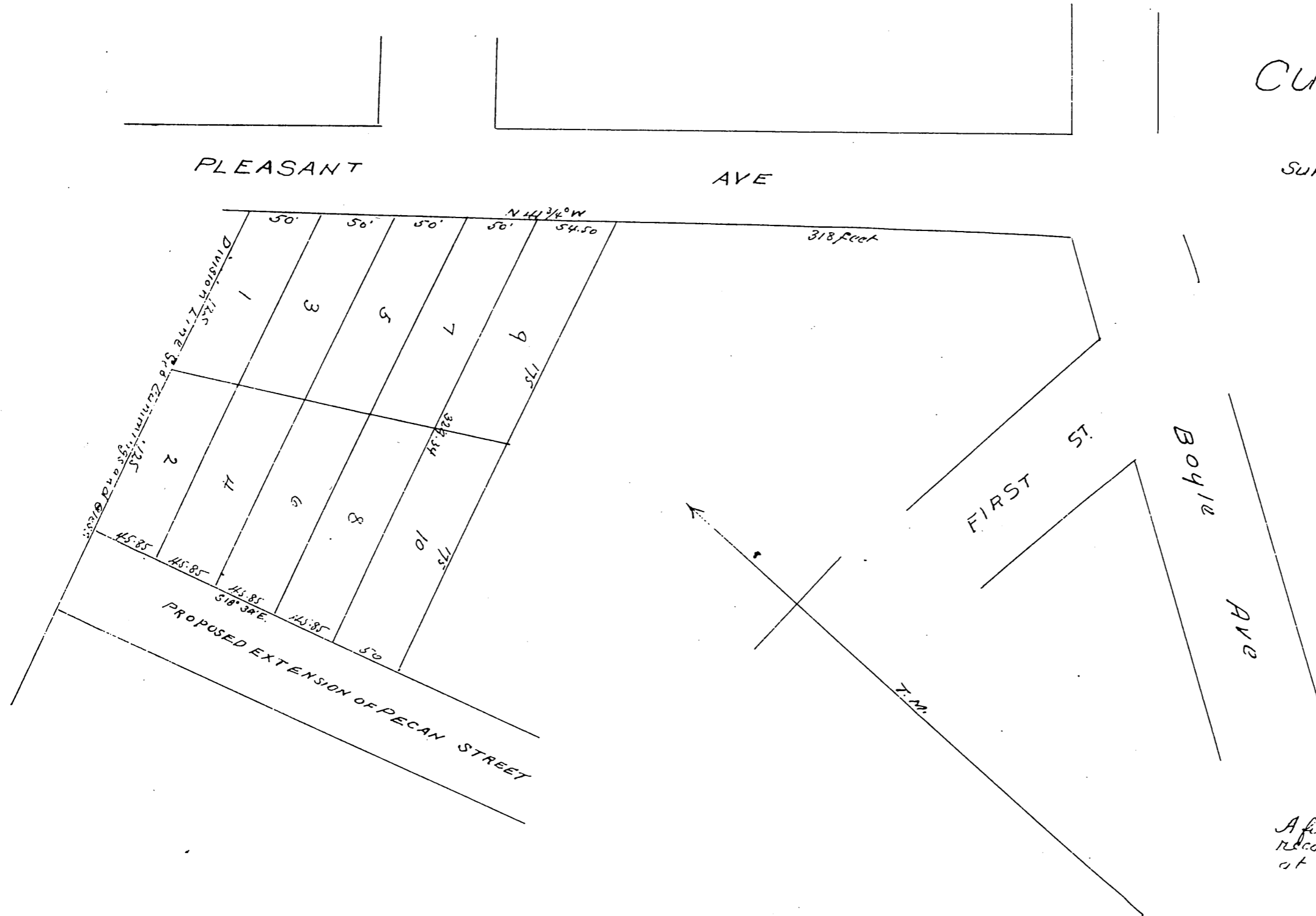


Map
of the
Cummings Home Tract
Los Angeles City Cal

Surveyed February 1892 by J. A. Bernal

SCALE 80 ft = 1"



A full true and correct copy of original
reco ted Jul 20 1892 at 2 min past 11.0 am
at request of L. A. Co
J. A. Kelly County Recorder
by W. W. Mills Deputy.

