



MAP OF A SUBDIVISION OF the Garvey Ranch

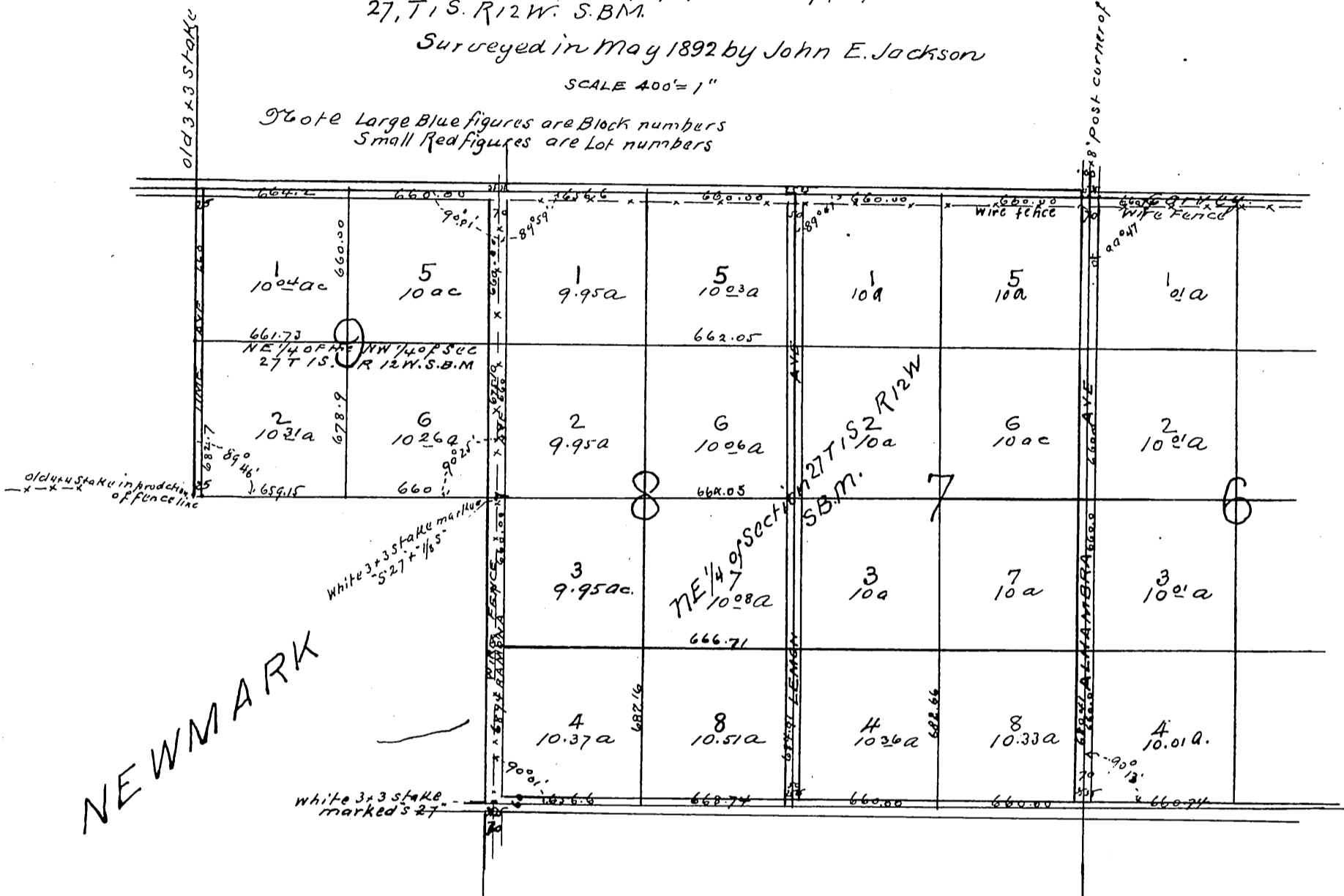
LOS ANGELES CO CAL

Being a subdivision of the SE 1/4 of Section 23, the north 1/2 of Section 26, the NE 1/4 of Section 27, and the NE 1/4, of the N.W 1/4 of Section 27, T. 1 S. R. 12 W. S. B.M.

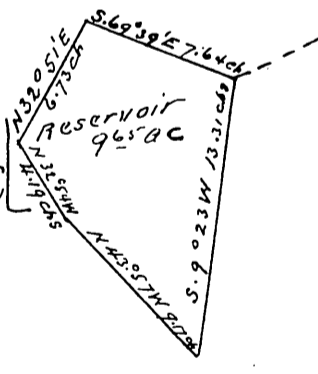
Surveyed in May 1892 by John E. Jackson

SCALE 400' = 1"

Note Large Blue figures are Block numbers
Small Red figures are Lot numbers



Richard



27 26
34 35