

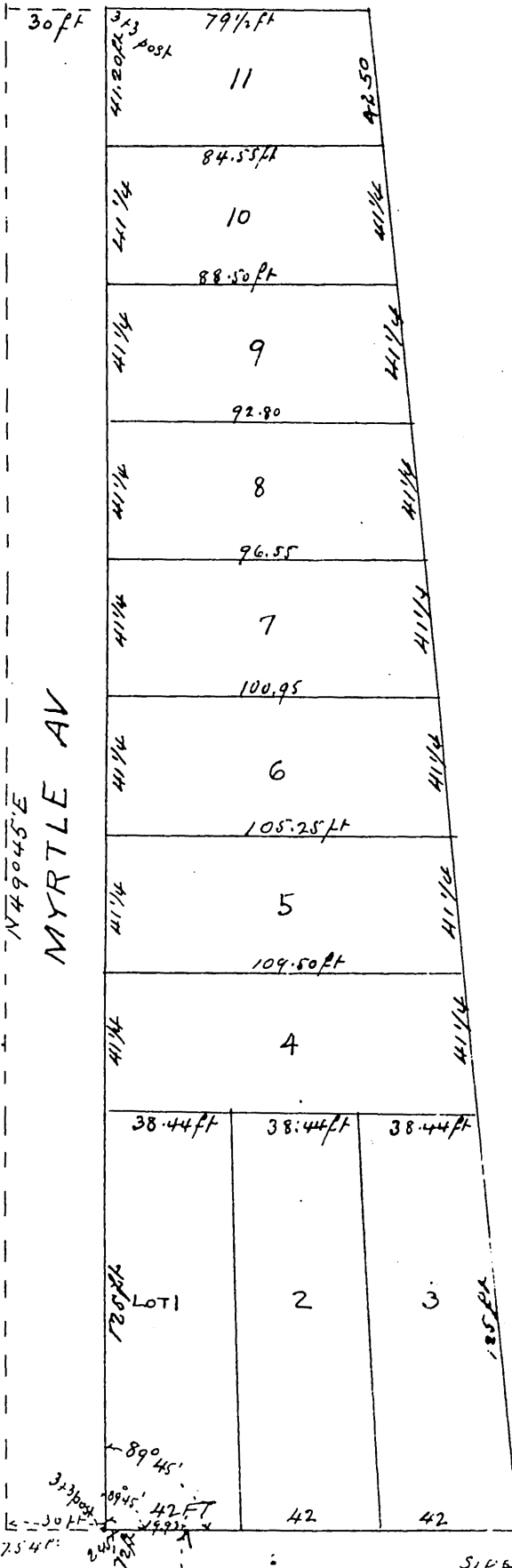


MAP OF THE ANDRA. B. De DOMINGUEZ SUBDIVISION

on the north side of Ninth St. in the City
and County of Los Angeles, State of Cali-
fornia. Surveyed Aug 21 & 22nd 1891
John Goldsworthy
Dep U.S. Surveyor

Scale 30ft

FILIFE BOTILLER



NINTH ST

MYRTLE AV.

MONTEGOMERY

A full, true, and correct copy of original
(scale reduced to 50 ft to one inch) recorded
Sep 28 1892 at 5 min past 11 a m at request
of A B De Dominguez (in lot 11, the figures & word (3x3 post)
being in pencil in original) J. H. Kelly County Recorder
By W. W. Mills Deputy