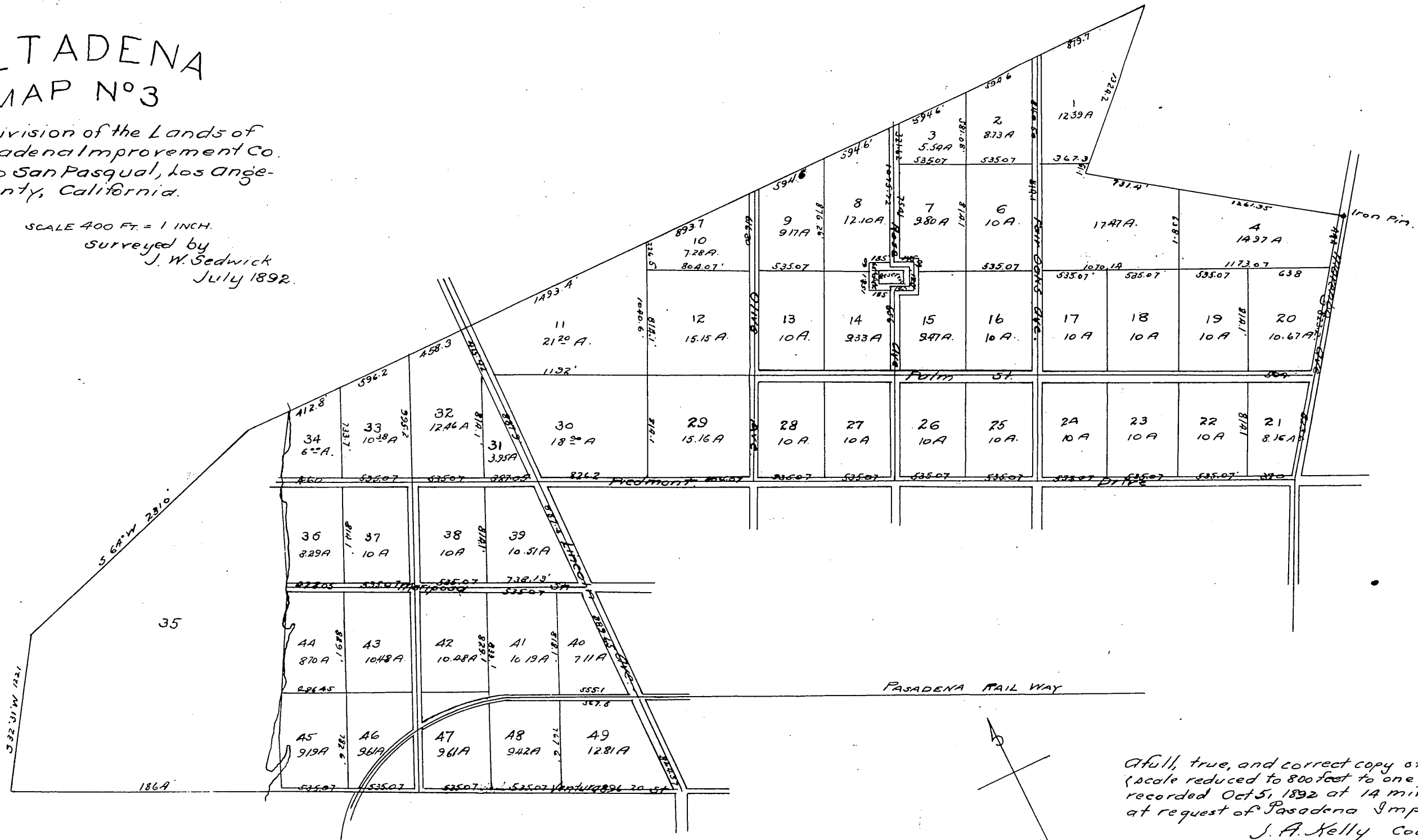


ALTADENA MAP N°3

A subdivision of the Lands of
the Pasadena Improvement Co.
Rancho San Pasqual, Los Ange-
les County, California.

SCALE 400 FT. = 1 INCH.

Surveyed by
J. W. Sedwick
July 1892.



A full, true, and correct copy of original
(scale reduced to 800 feet to one inch)
recorded Oct 5, 1892 at 14 min. past 3 P.M.
at request of Pasadena Impt. Co.
J. A. Kelly County Recorder
By W. W. Mills Deputy.