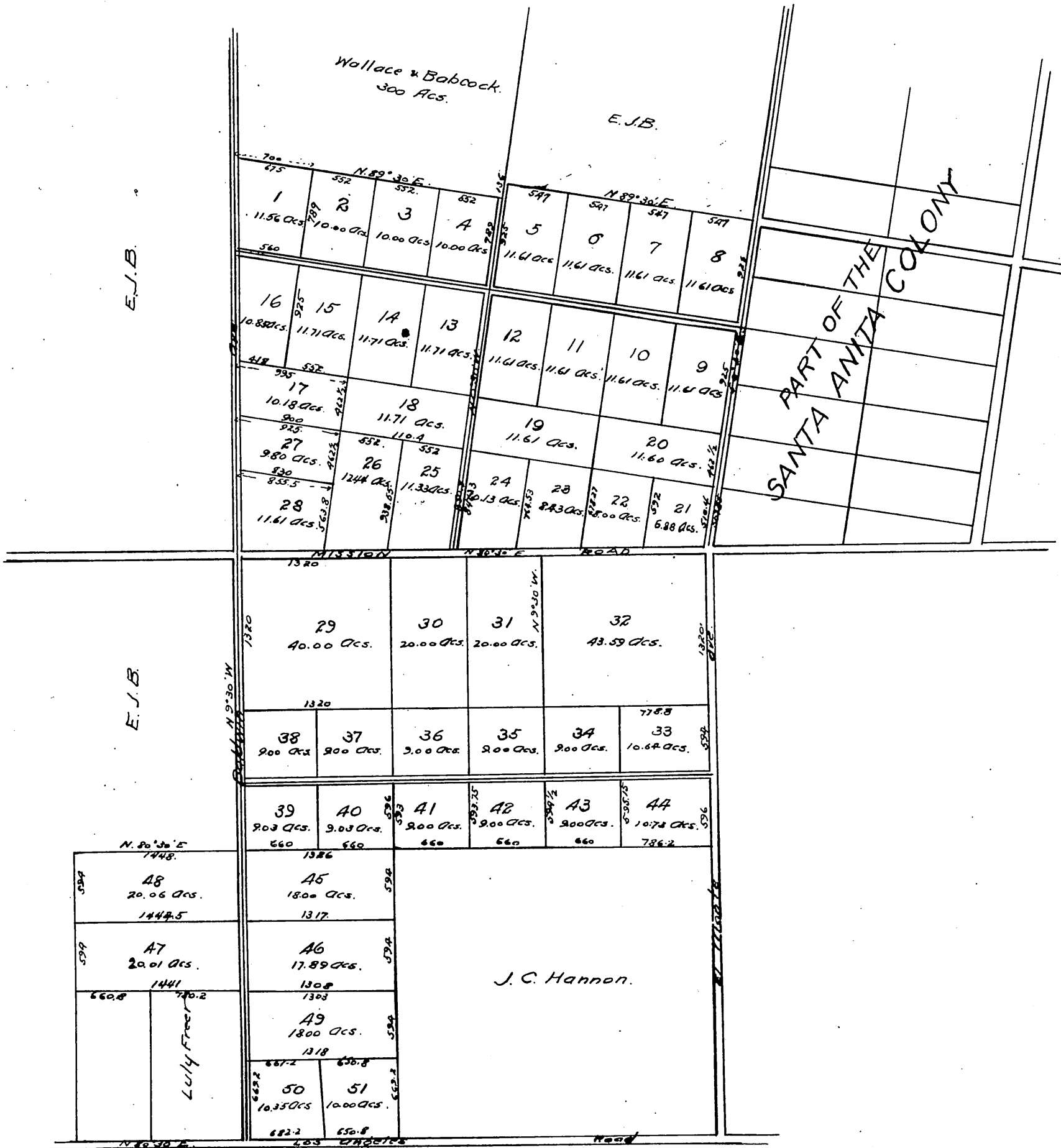


Map of E. J. BALDWIN'S ADDITION No 1 TO SANTA ANITA COLONY

San Gabriel Valley
Surveyed Oct. 1891 by H. J. Stevenson.

SCALE 500 FT. TO 1"



A full, true, and correct copy of original
(scale reduced to 1000 feet to one inch)
recorded Nov. 25, 1892 at 55 min past 9 a.m.
at request of E. J. Baldwin.

J. A. Kelly County Recorder
By W. W. Miller Deputy.