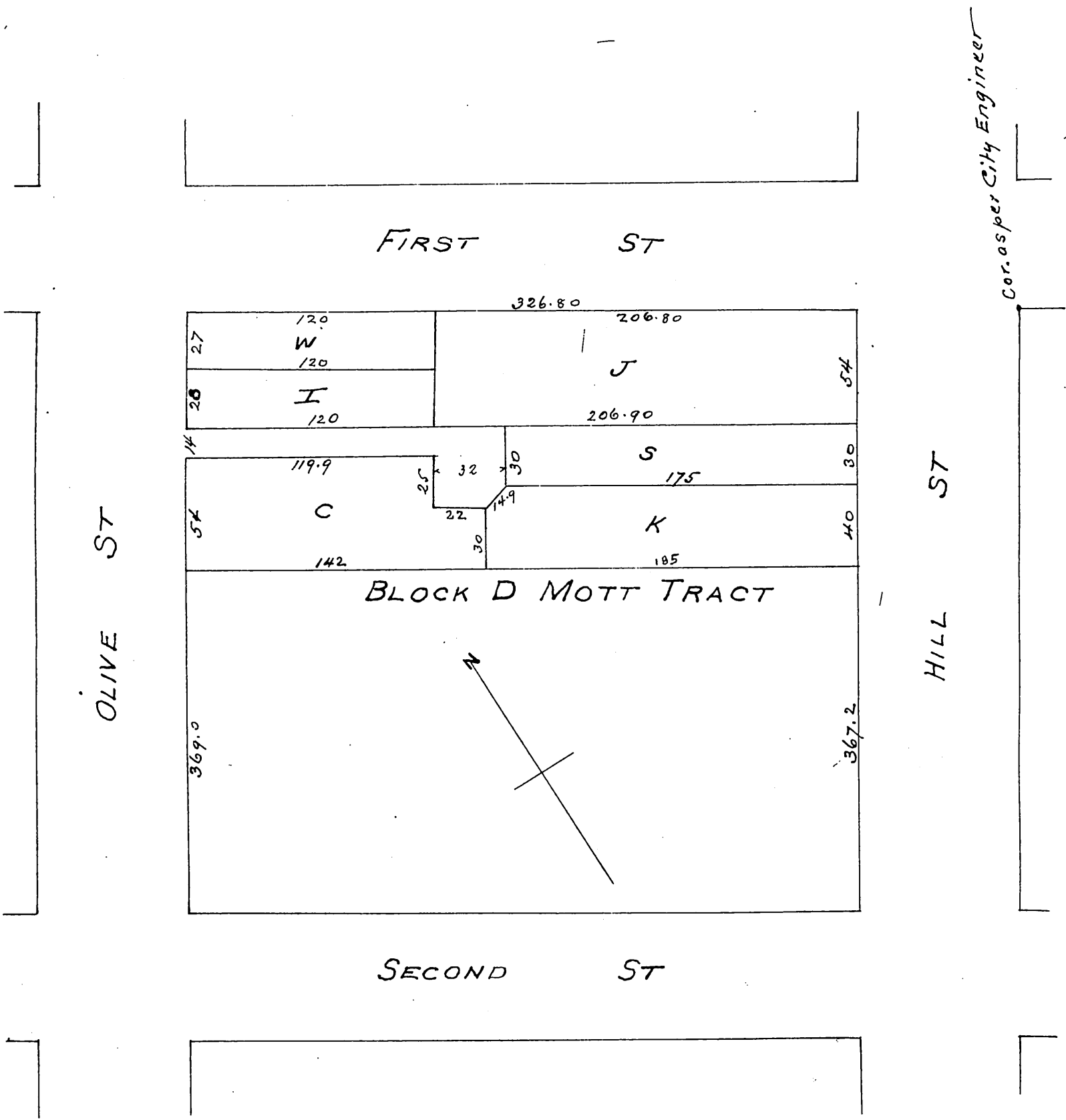


Map of resubdivision of Lots 7, 8, 15 & 16 Block D, of the Mott Tract, Los Angeles city, made for Mrs S. Q. Wicks and M. L. Wicks jr. October 1892



A full true and correct copy of original recorded Nov 25 1892 at 27 min past 4 p.m. at request of Mrs S. Q. Wicks J. A. Kelly County Recorder By W. W. Miles Deputy