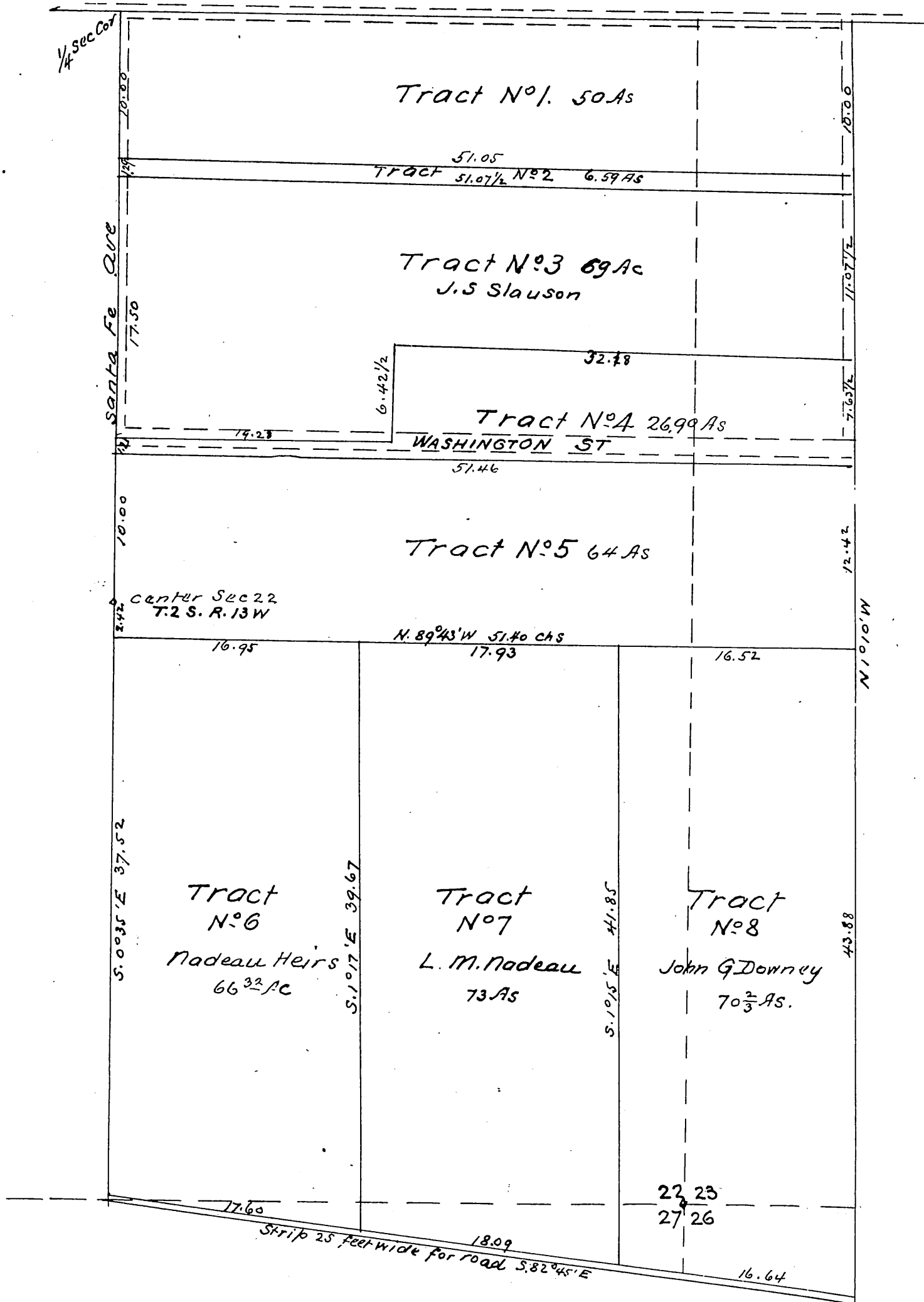


CHIPLEY TRACT

Being sub of part of the Rancho San Antonio

Scale 4 chs = 1 inch

Surveyed October 1902
by H. J. Stevenson
Surveyor



A full, true and correct copy of original (scale reduced to 8 chs to an inch) recorded Feb 10 1893 at 32 min past 4 p m at request of J. G. Downey
Arthur Gray
County Recorder
By W. W. Mills Deputy