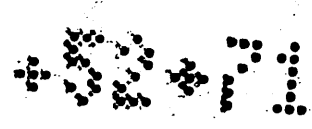
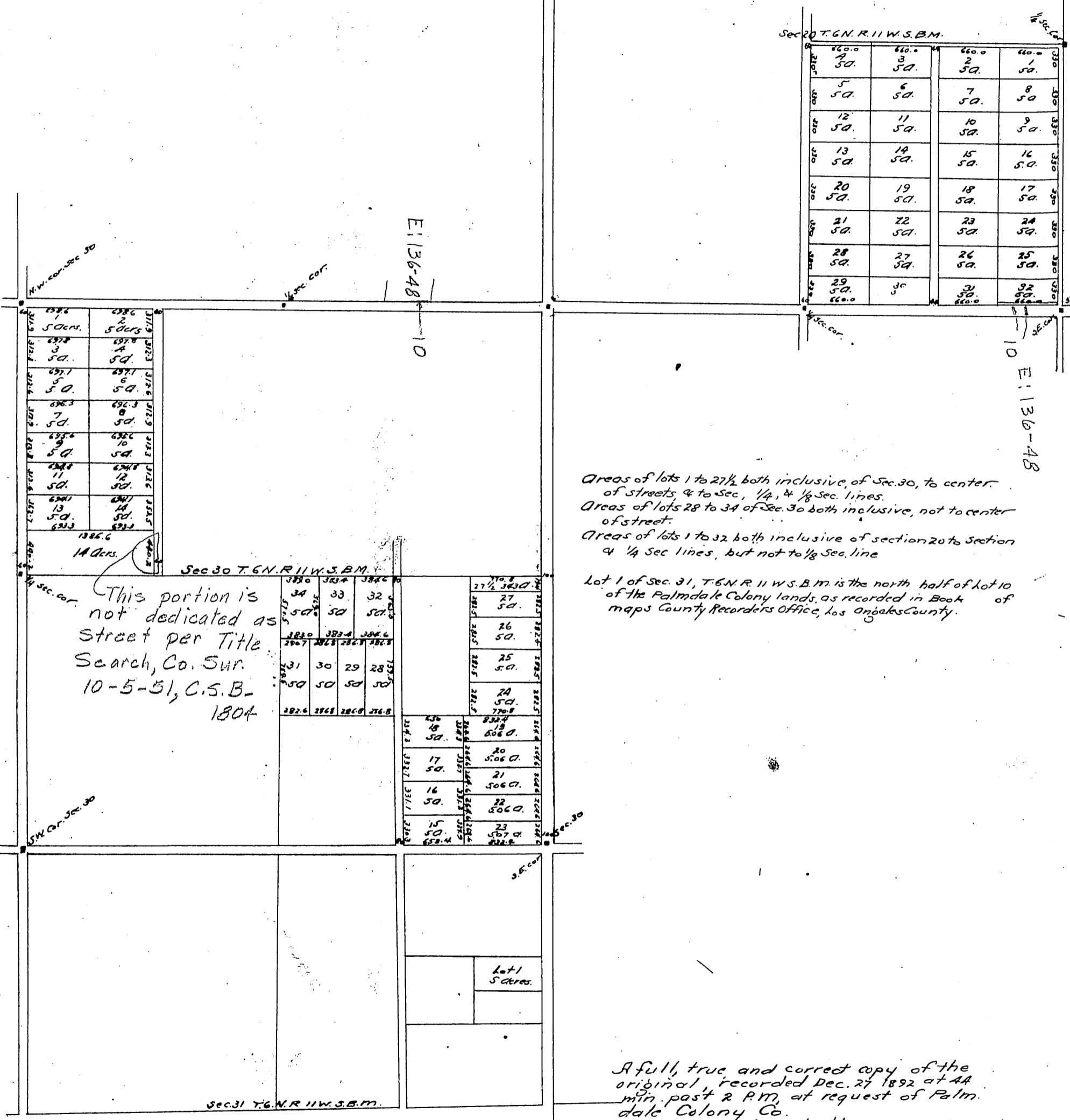


M.R. 

# Map

showing a portion of the lands of the  
**PALMDALE COLONY Co**  
 Los Angeles Co.  
 Cal.  
 Scale 1-inch = 1000ft.



Sec 20 T.6N.R.11W.S.B.M.

1	2	3	4
5	6	7	8
12	11	10	9
13	14	15	16
20	19	18	17
21	22	23	24
28	27	26	25
29	30	31	32

Areas of lots 1 to 27 1/2 both inclusive, of Sec. 30, to center of streets, & to Sec. 1/4, & 1/8 Sec. lines.  
 Areas of lots 28 to 34 of Sec. 30 both inclusive, not to center of street.  
 Areas of lots 1 to 32 both inclusive of section 20 to section 4 1/4 Sec lines, but not to 1/8 Sec. line  
 Lot 1 of Sec. 31, T.6N.R.11W.S.B.M. is the north half of lot 10 of the Palmdale Colony lands, as recorded in Book of maps County Recorders Office, Los Angeles County.

This portion is not dedicated as street per Title Search, Co. Sur. 10-5-51, C.S.B. 1804

A full, true and correct copy of the original, recorded Dec. 27 1892 at 44 min. past 2 P.M. at request of Palmdale Colony Co.  
 J.D. Kelly County Recorder.  
 By W.W. Mello Deputy.