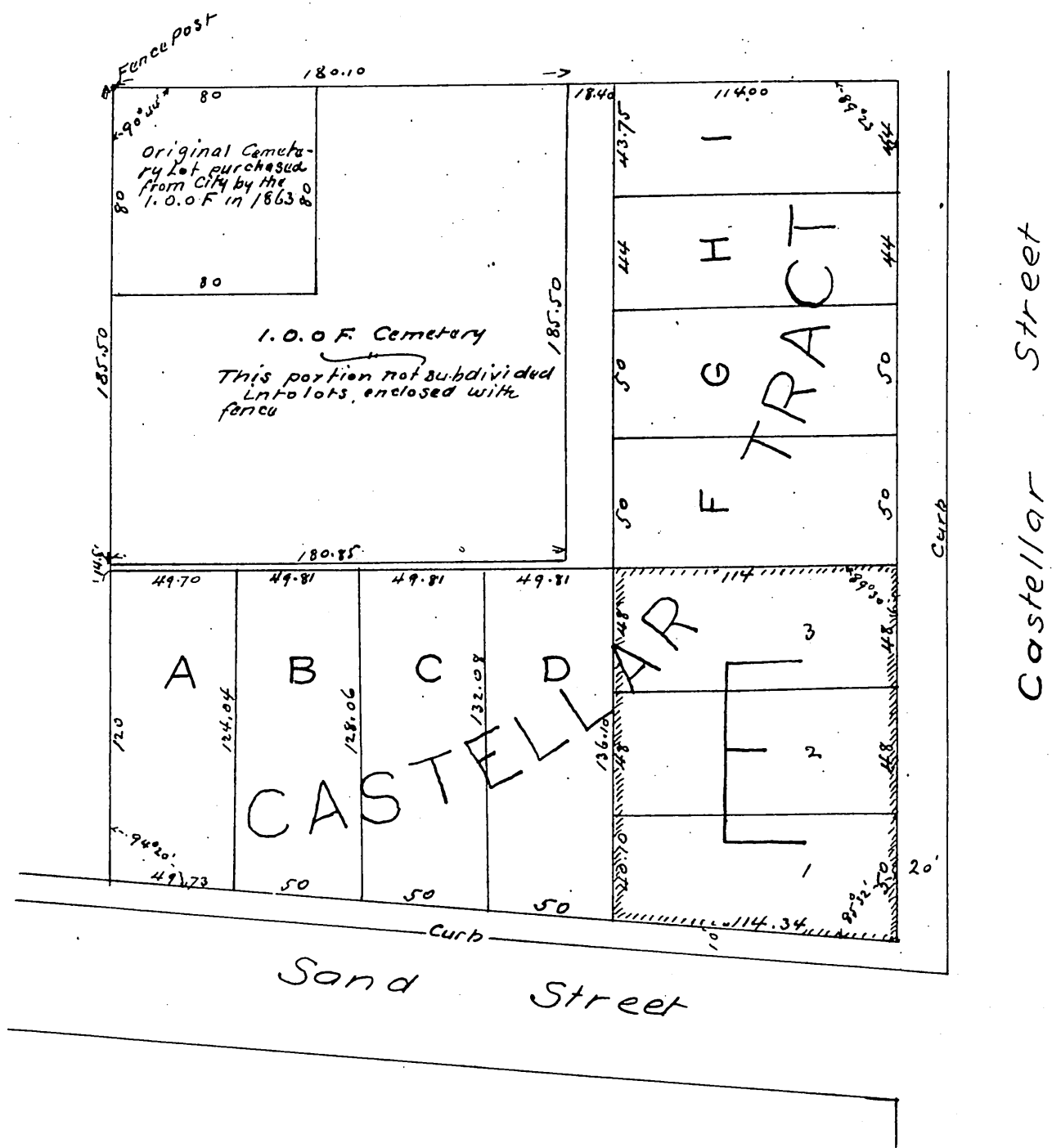




PLAT OF CASTELLAR TRACT

Being property owned by I. O. O. F Lodges No 35 and No 160 Gus. Heiman Trustee, situate on N. W. Cor of Castellar and Sand Streets Los Angeles City

Surveyed by Wright & Nicholson
Scale in = 30 ft Sept 1888



A full, true and correct copy of original
(Scale reduced to 60 feet to one inch)
recorded Jan 3, 1893 at 35 min past 1 pm
at request of Gus Heiman
Arthur Gray County Recorder
By W. W. Mills Deputy