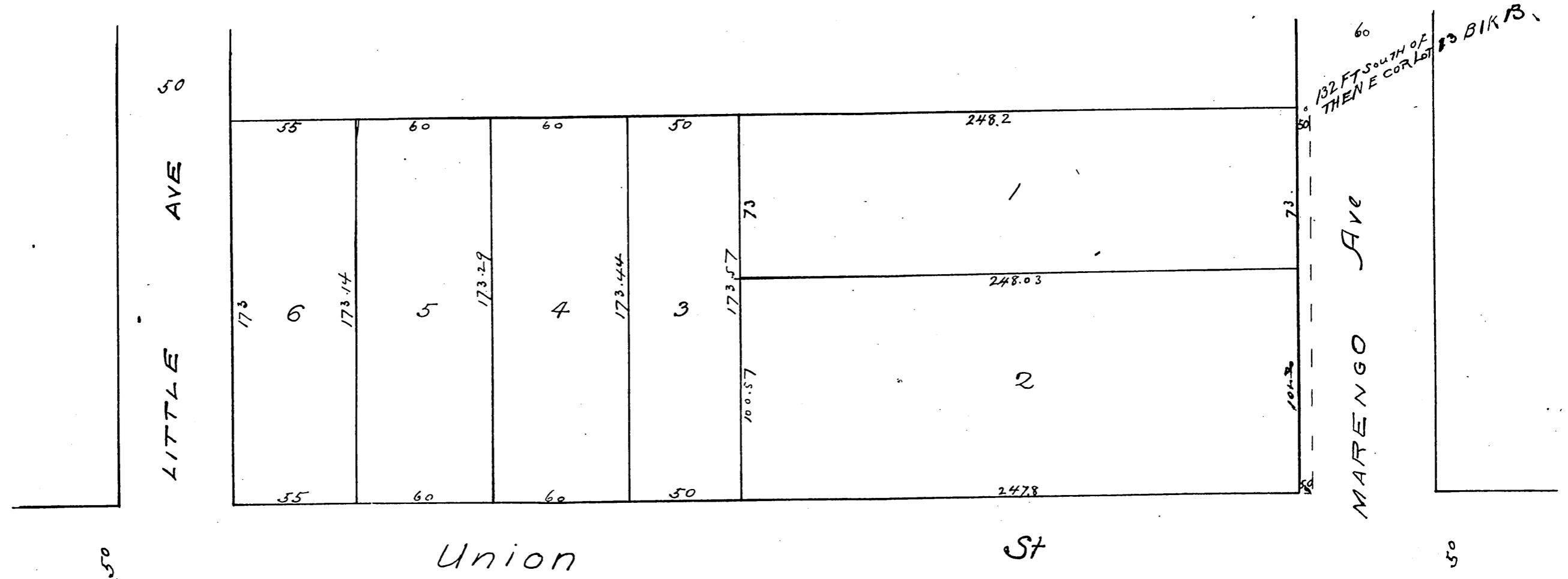


GOODWIN'S SUBDIVISION
 of a portion of Lot 13 B1'K'B of the lands
 of the Lake Vineyard Land and Water
 Association, Pasadena Cal.
 Surveyed by T. D. Allin
 Jan 1893

Scale, 50 Ft to 1 inch



A full, true and correct copy of
 original recorded Jan 20 1893 of
 39 min past 4 p m at request of
 Los Angeles Abstract Co
 Arthur Bray County Recorder
 By W. Waller Deputy

