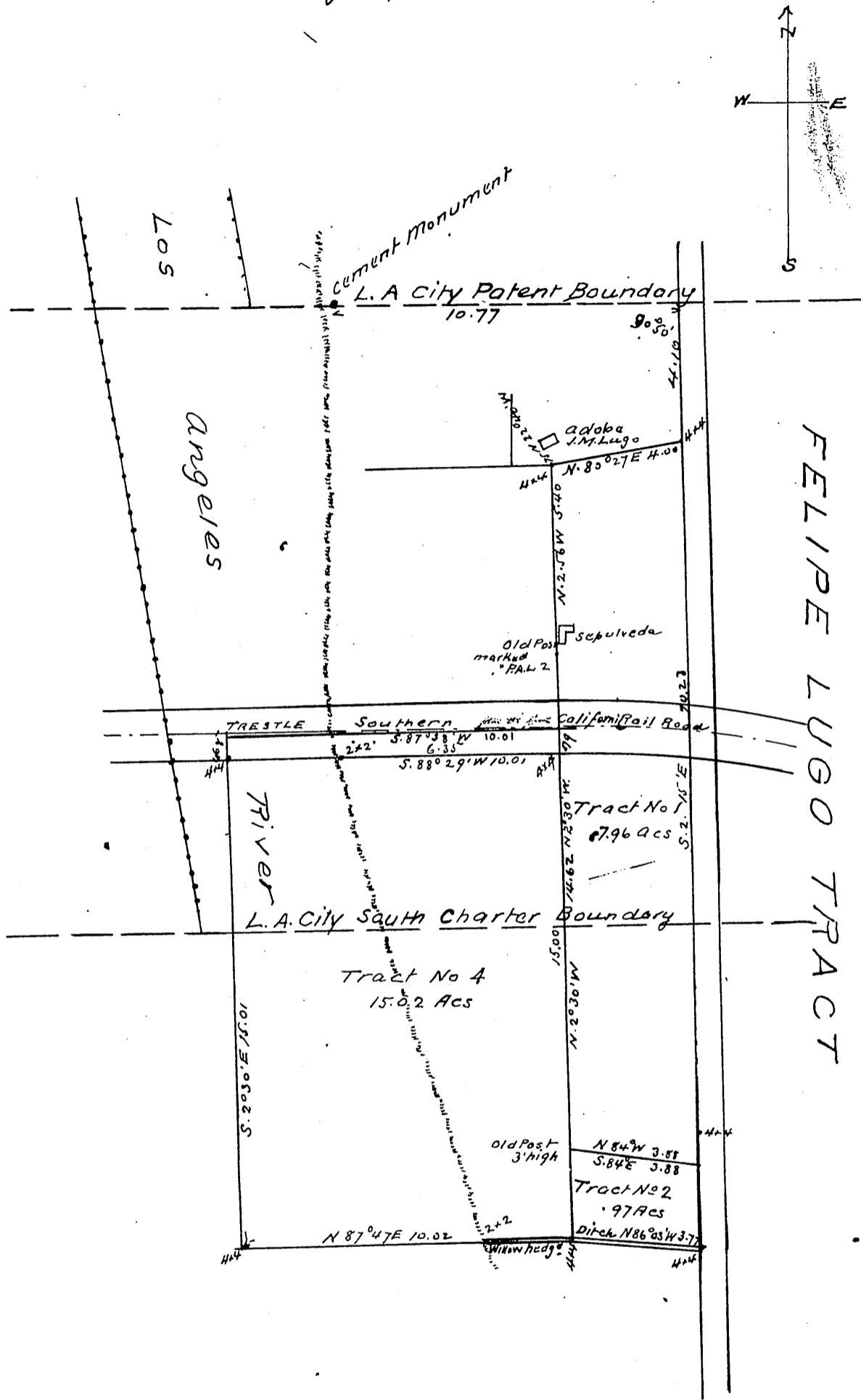




MAP OF
 Tracts No 1, 2 and 4
 as described in deed dated Sept 26 1892 from
 A. E. Sepulveda & ux to L. A. Savings Bank
 surveyed by
 WRIGHT & NICHOLSON
 January 1893 Scale 1 in = 2 chs



A full, true and correct copy
 of original (scale reduced to 4 chains
 to the inch) recorded Jun. 23. 1893
 at 16 min past 1 p.m. at request
 of Los Angeles Savings Bank
 Arthur Gray County Recorder
 By W. W. Mills Deputy