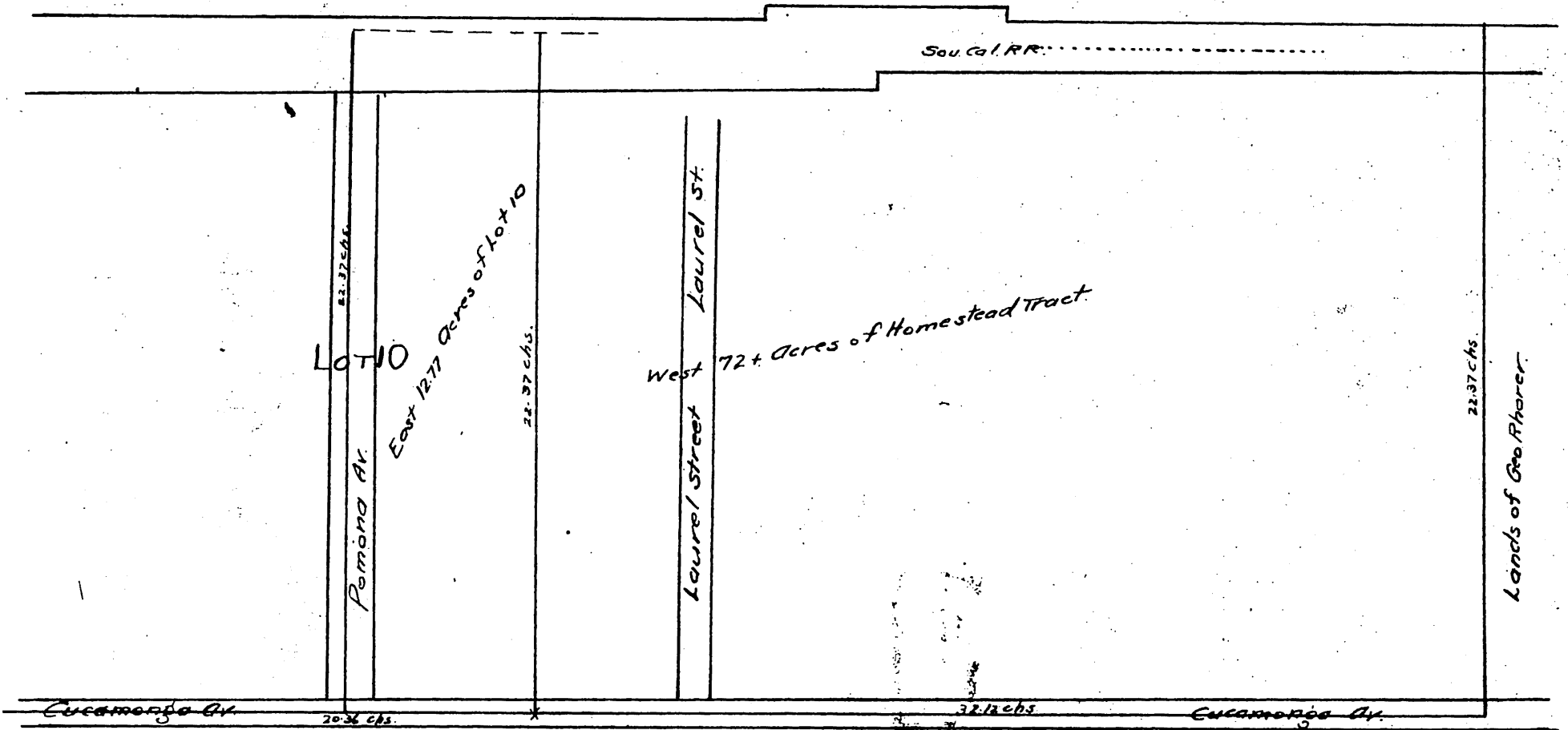


Map of West 72+ Acres of Homestead Tract
and East 12.77 Acres of Lot 10
of
Loop & Meserve Tract, Rancho San Jose

As per map recorded in Book 34 of
Deeds pages 3 & 4 L. A. Co. Records }
Recorded at the request of A.R. Meserve.
L. H. Meserve, H.W. Meserve, E. A. Meserve
& A. Glassell.

Including the portion of such Homestead Tract and such E. 12.77
Acres of Lot 10, as were subdivided into lots, blocks, & streets by
that certain Map of Palomares Townsite recorded in Book 15 pages
71 & 72 Miscellaneous Records of Los Angeles County. Hereby revo-
king and cancelling said Map of Townsite of Palomares & revoking
& cancelling all dedications (& offers thereof) of Streets therein made
except as to Laurel St. & Pomona Av., & hereby restoring all such
property to acreage property.

Lizzie H. Meserve H.W. Meserve, and
A.R. Meserve Edwin A. Meserve



A full, true and correct copy of original
recorded Feb 27 1893 at 7 min past 2 P.M.
at request of L.H. Meserve.
Arthur Bray County Recorder
By T.W. Mille Deputy.