

STIMSON BRO'S

Resubdivision of farm lots

18419

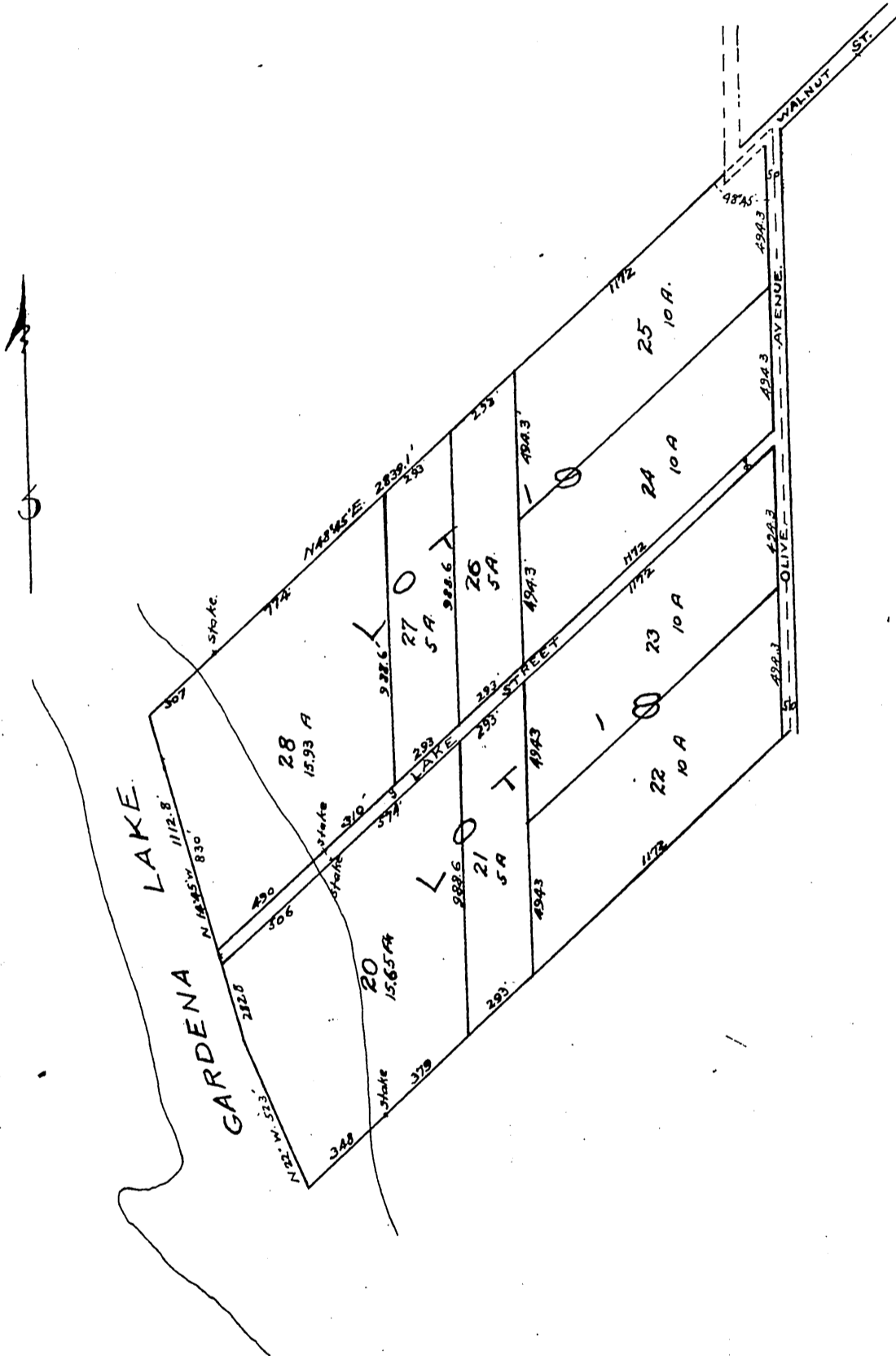
South Gardena Tract

as per map recorded in Book
43 Page 39 Los Angeles Co. Cal.

All measurements and areas are to centre of streets

Feb 23 1893 R. G. Miller C.E.

SCALE 500 FT = 1 INCH.



A full, true, and correct copy of original
recorded Feb. 27 1893 at 50 min past 3 PM.
at request of L. A. Abst. Co.

Arthur Bray
County Recorder
By W. W. Mills Deputy.