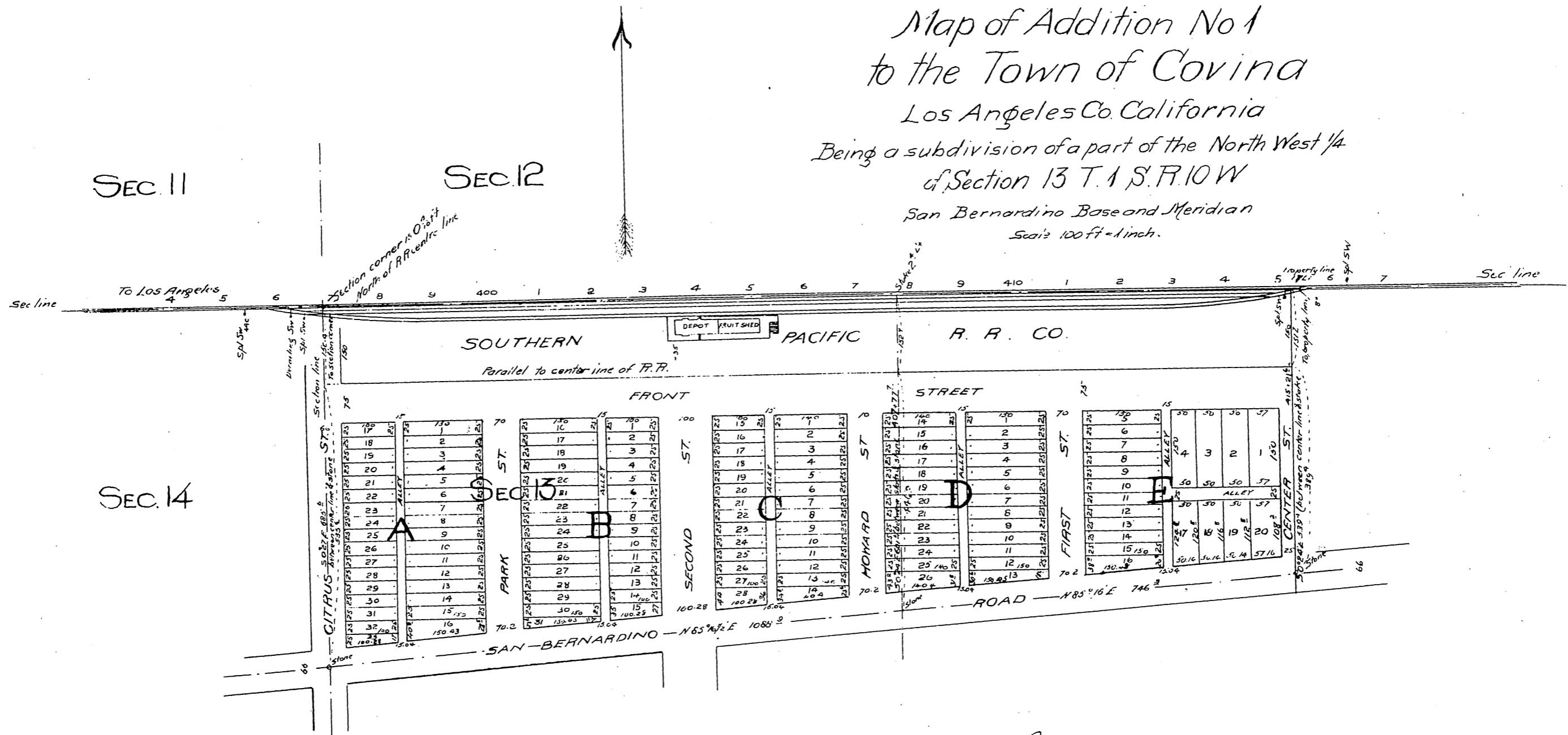


Map of Addition No 1  
to the Town of Covina  
Los Angeles Co. California  
Being a subdivision of a part of the North West 1/4  
of Section 13 T. 1 S. R. 10 W  
San Bernardino Base and Meridian  
Scale 100 ft = 1 inch.



Owner: J. L. King

A full, true and correct copy of the original  
(Scale reduced to 200 feet to 1 inch)  
Recorded Nov 7. 1895. at 40 Min past 3 P.M.  
at request of J.A. Muir.

E.C. Hodgman County Recorder

By E.T. Wright  
County Surveyor  
Ex officio Deputy County Recorder