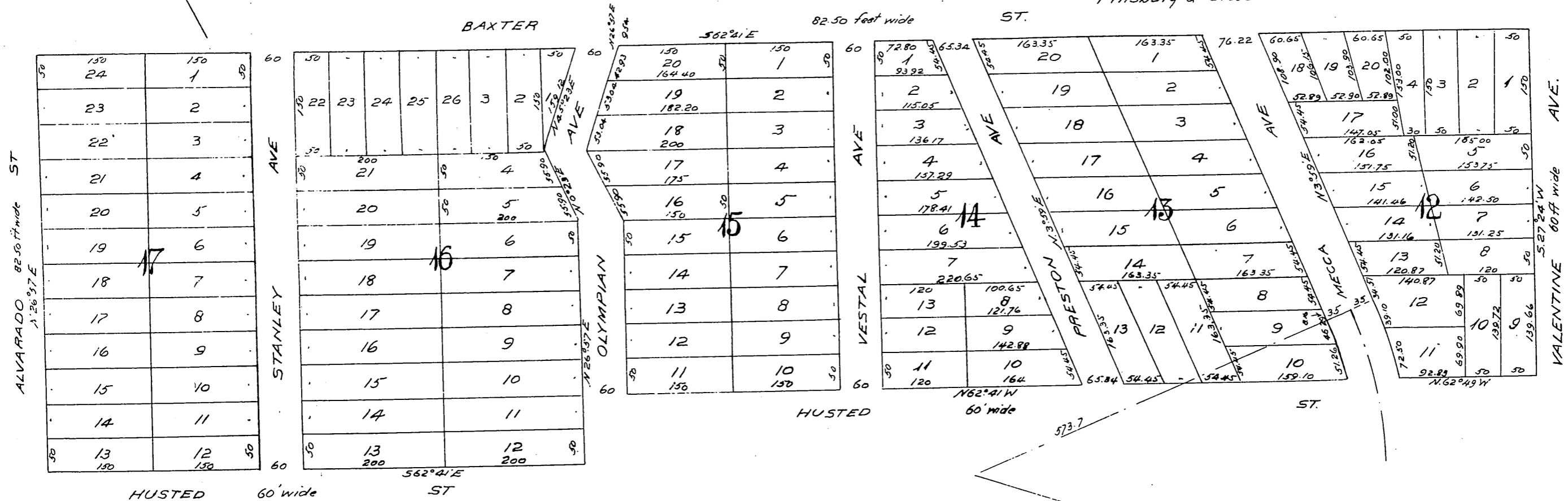


# Map showing Subdivision of Blocks 12, 13, 14, 15, 16 and 17 ELYSIAN HEIGHTS

As per map recorded in Book 37, Pages 63 & 64  
Miscellaneous Records of Los Angeles Co. Cal.  
Scale, 100ft=1inch

Surveyed Sept 1887, by  
Pillsbury & Cleveland.



*James L. Maltman*

A full, true and correct copy of the original  
(Scale reduced to 150 feet to 1 inch)  
Recorded Nov. 8 1895, at 45 Min past 10 A.M.  
at request of J. S. Maltman.  
E. C. Hodgman, County Recorder  
By *E. T. Wright*  
County Surveyor and ex-officio Deputy County Recorder