

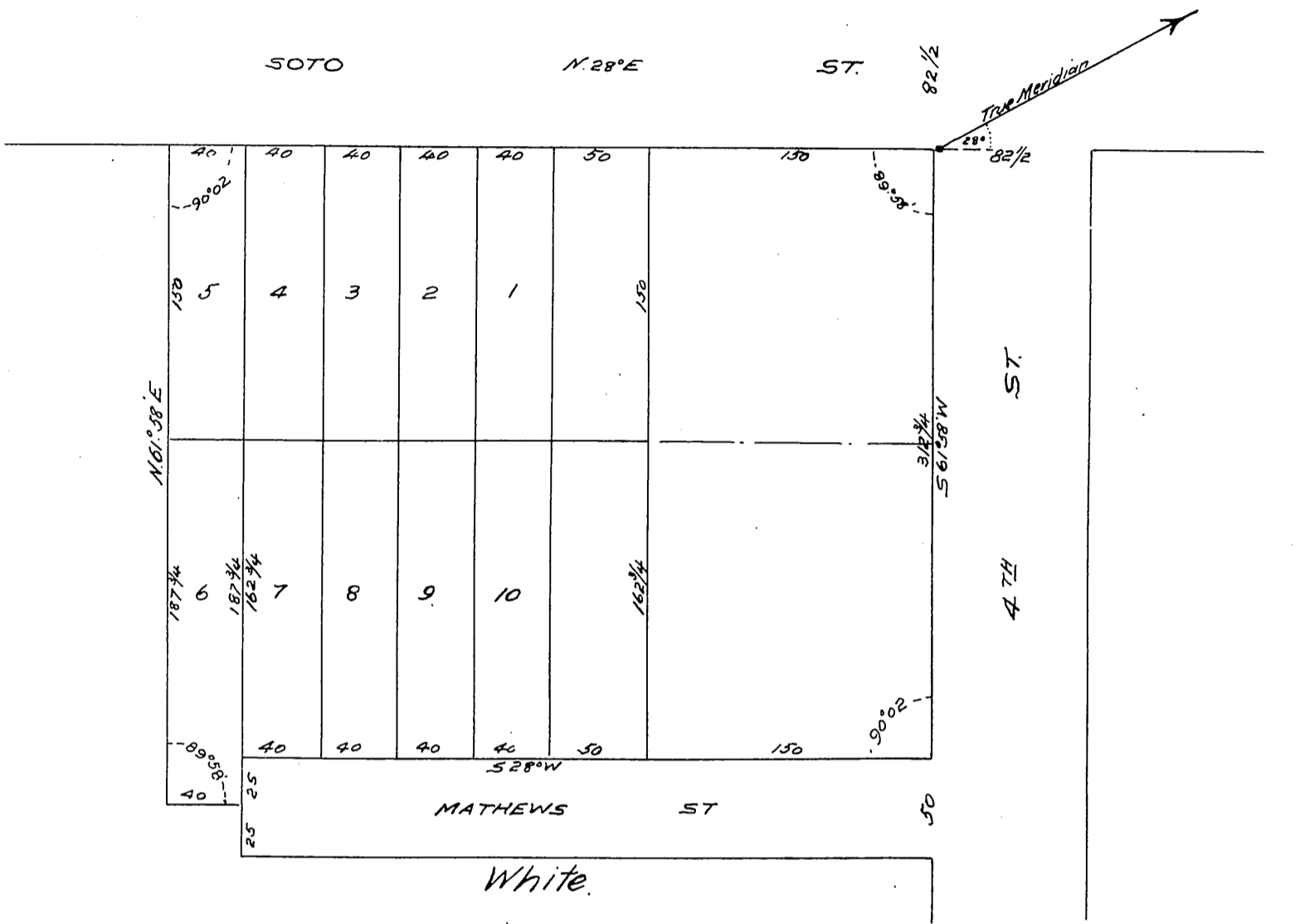
3

Plat of
Hellar's Subdivision
of part of Lot 4, Block 72, Hancock's Survey
of Los Angeles City Donation Lands

Distances in feet. Scale 40 feet = 1 inch.

Surveyed Nov. 1895

Albert G. Ruator, Sur.



Owner: George W. Hellar
Spoke. Mrs. Hellar

A full, true and correct copy of the original
(Scale reduced to 80 feet to 1 inch)
Recorded Nov. 12 1895 at 6 Min past 1 P.M.
at request of G. M. Hellar.

E. C. Hodgman, County Recorder.

By E. T. Wright.

County Surveyor and ex-officio Deputy County Recorder.