

# Map of O.T. Bassett's Subdivision of the Workman Tract.

Being a part of the Rancho La Puente

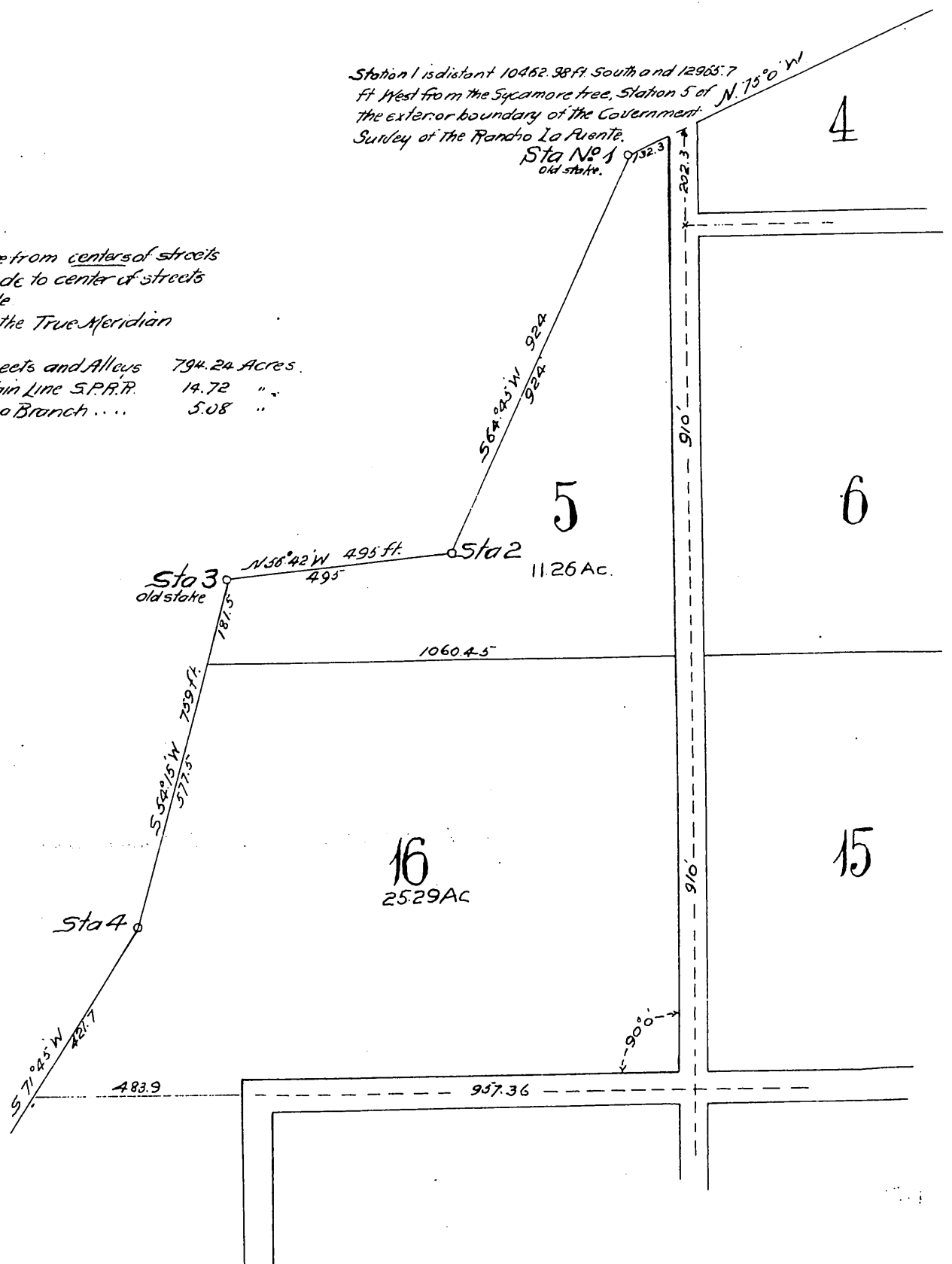
Surveyed and platted by S. O. Wood, Civil Engineer.

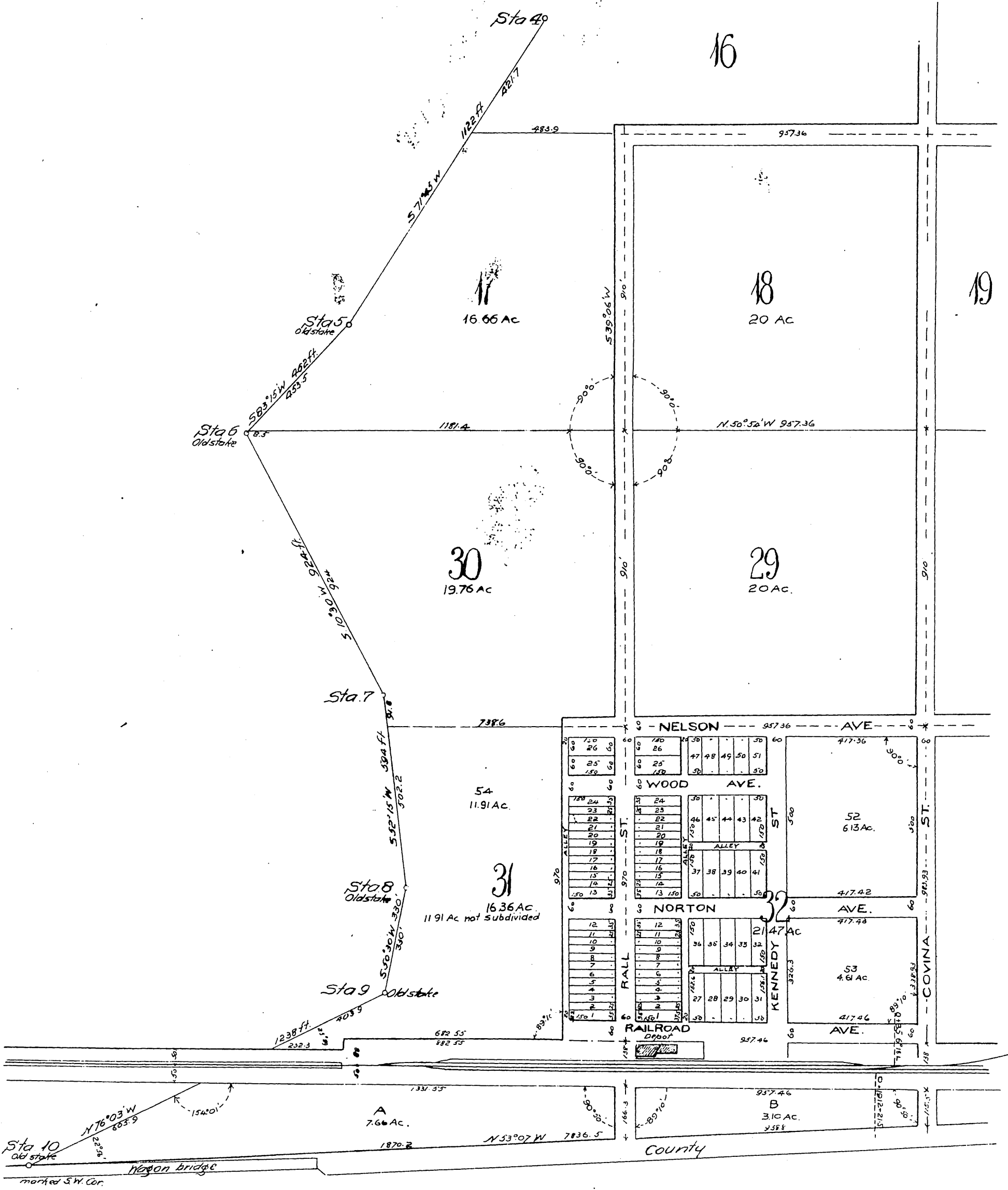
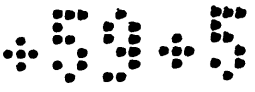
Los Angeles, Cal.  
Scale 1 in = 300 Ft.

**NOTE:**

All the distances given are from centers of streets  
 Accurages marked include to center of streets  
 Streets are all 60-ft wide  
 Courses given are from the True Meridian

Land in Blocks, Lots, Streets and Alleys	794.24 Acres.
Land in Right of Way Main Line S.P.R.R.	14.72 "
Land in " " Colima Branch	5.08 "





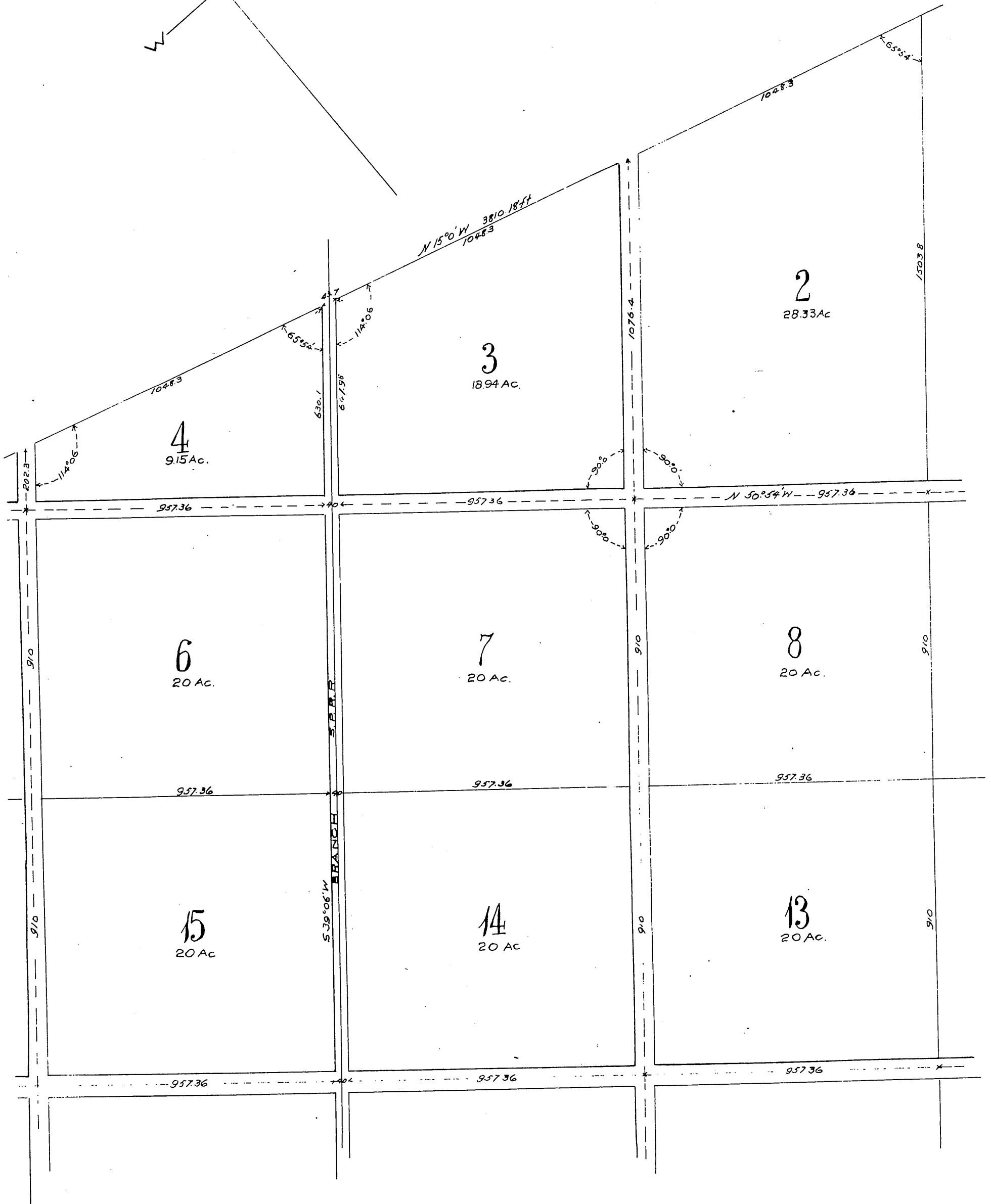
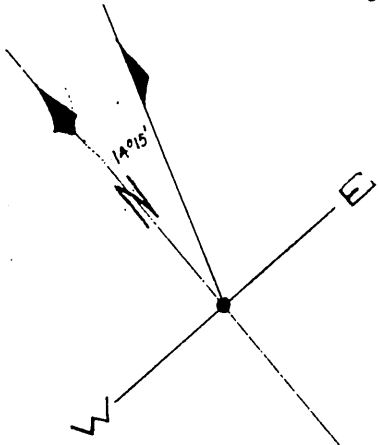
15

13



5047

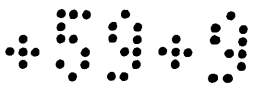
7



19

21

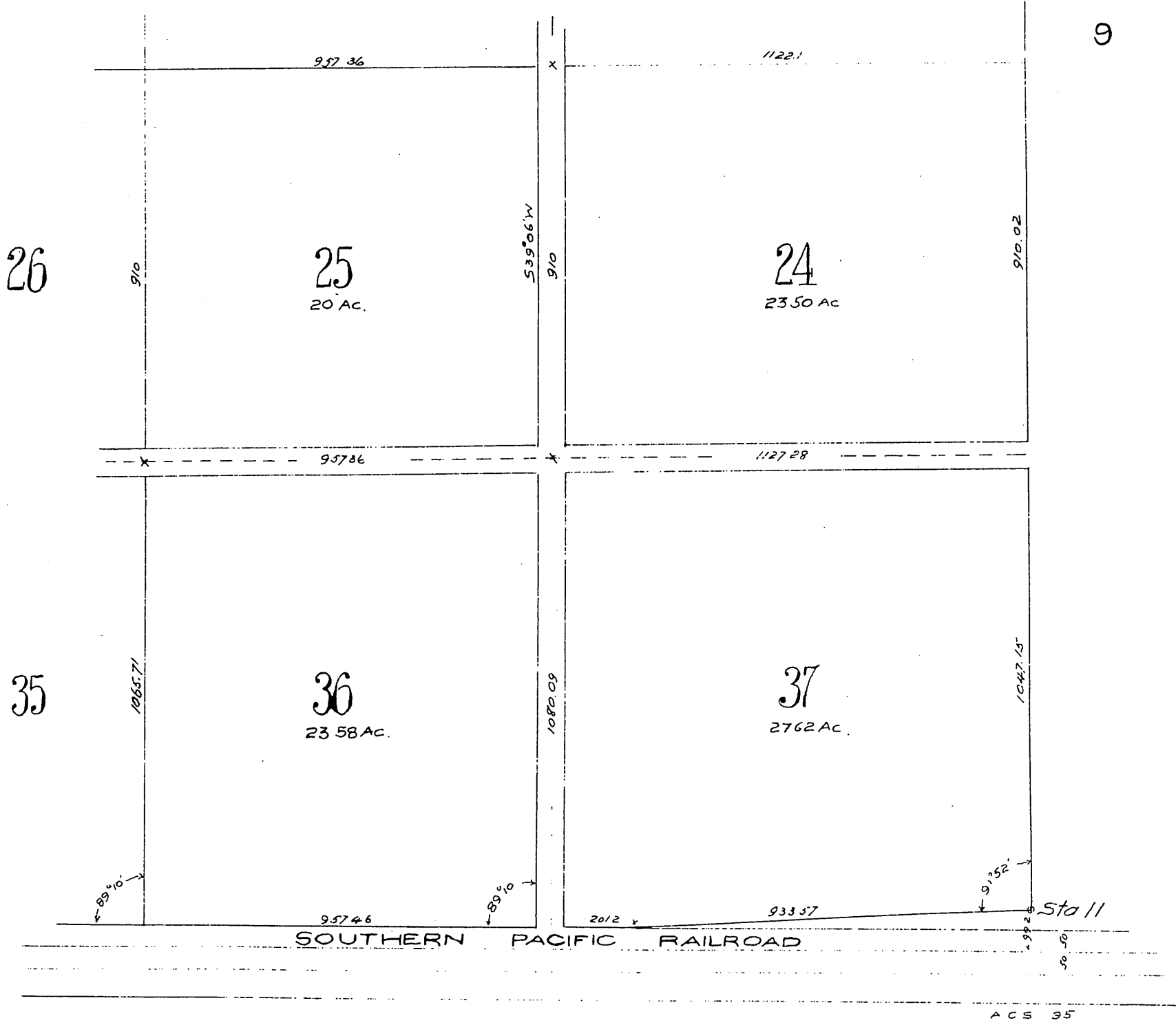




22

23

9



*Witness O. T. Bassett*

*A full, true and correct copy of the original  
Recorded Nov 13 1895 at 3 Min past 4 P.M.  
at request O. T. Bassett*

*E. C. Hodgman, County Recorder*

*By E. T. Wright*

*County Surveyor and ex-officio Deputy County Recorder*