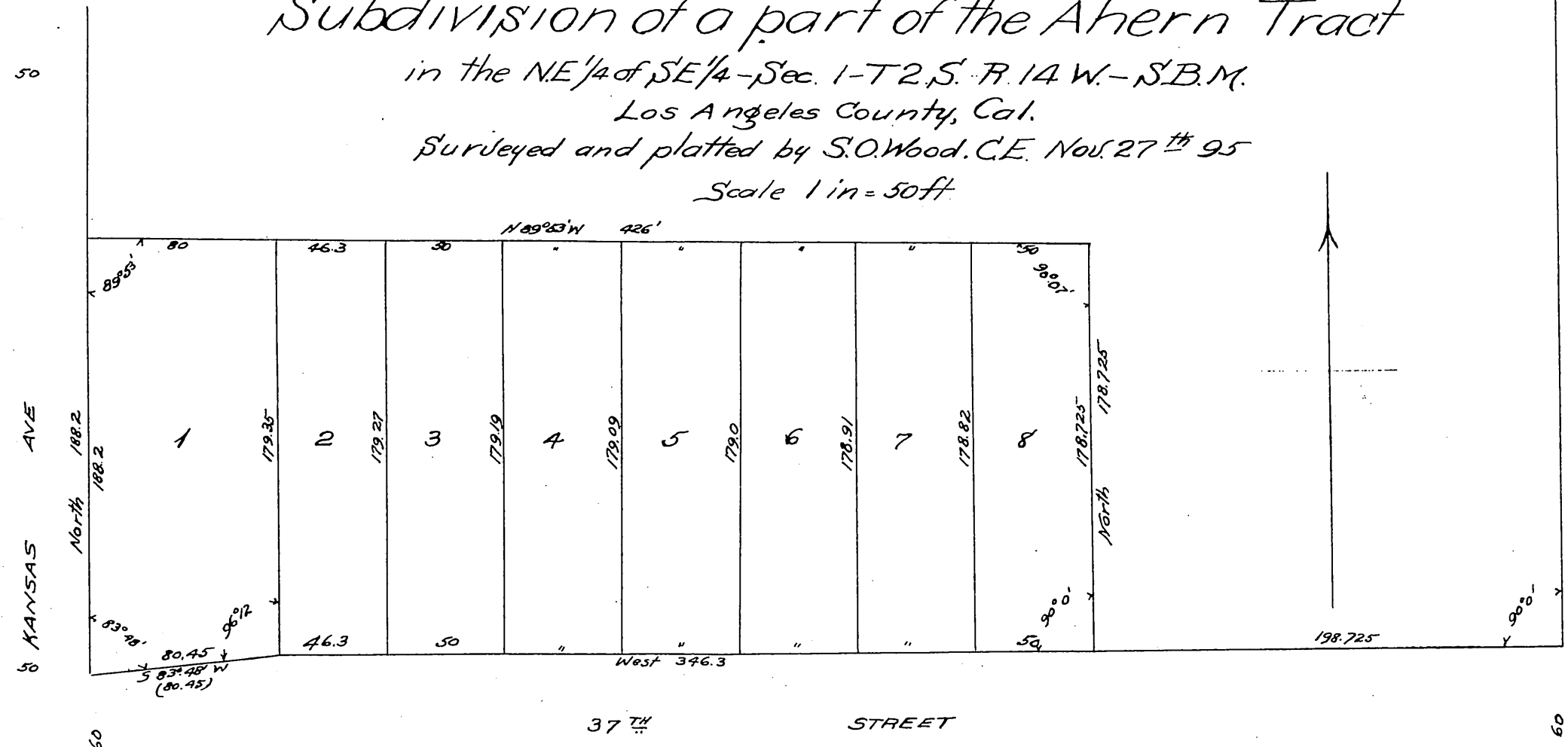




Plat of
 Ahern's
 Subdivision of a part of the Ahern Tract
 in the NE 1/4 of SE 1/4 - Sec. 1 - T2S. R. 14W. - S.B.M.
 Los Angeles County, Cal.
 Surveyed and platted by S.O. Wood, C.E. Nov. 27th 95
 Scale 1 in = 50 ft.



Range 14 W S.B.M. 8 VERMONT
 Range 13 W. S.B.M. 8
 North 838.725 to int. of Jefferson Street Vermont Ave →

Owner: *Mary Ahern*
 A full true and correct copy of the original
 (Scale reduced to 60 feet to one inch)
 Recorded 16.1.30 1895 at 48 Min. past 10 AM
 at request of W.J. Ahern
 E.C. Hagaman, County Recorder.
 By *E. T. Wright.*
 Co. Sur and ex-officio Dep. Co. Rec.