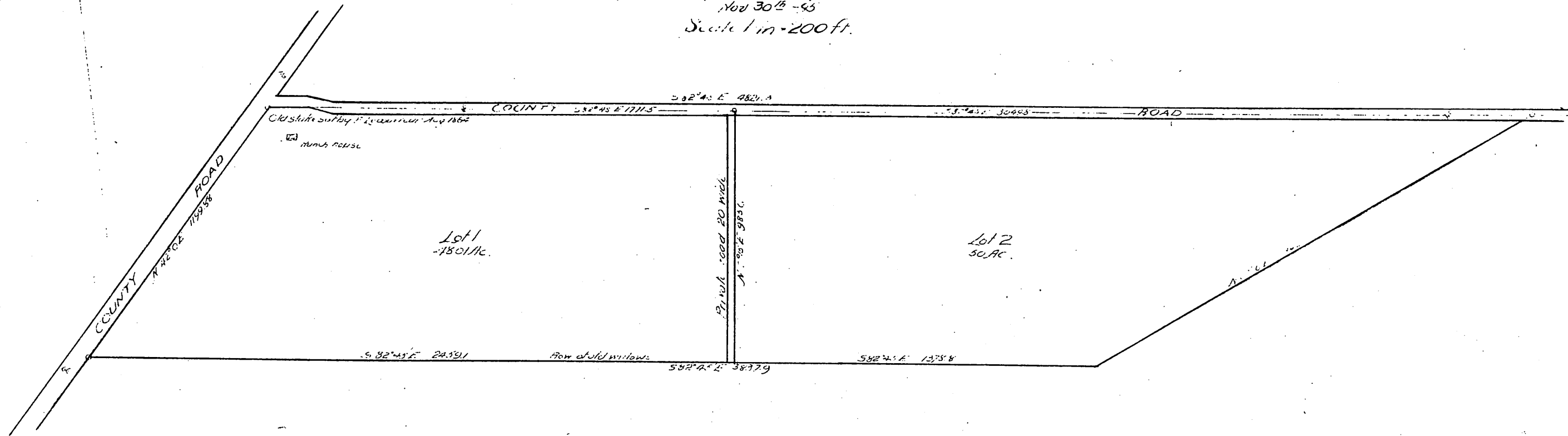


Map of
 Subdivision of Lot 6 of the I Heyman Tract
 of the
 Rancho San Antonio
 Surveyed and platted by S.C. Wood, C.E.
 Nov 30th - 95
 Scale 1 in = 200 ft.



A full, true and correct copy of the original
 (Scale reduced to 400 feet to 1 inch)
 Recorded Dec. 3 1895 at 10:45 AM
 at request of T.N. Ellis

E.C. Hedgeman, County Recorder

By E.T. Wright.

Co. Sur and ex-officio Dep. Co. Rec.

John J. [unclear]